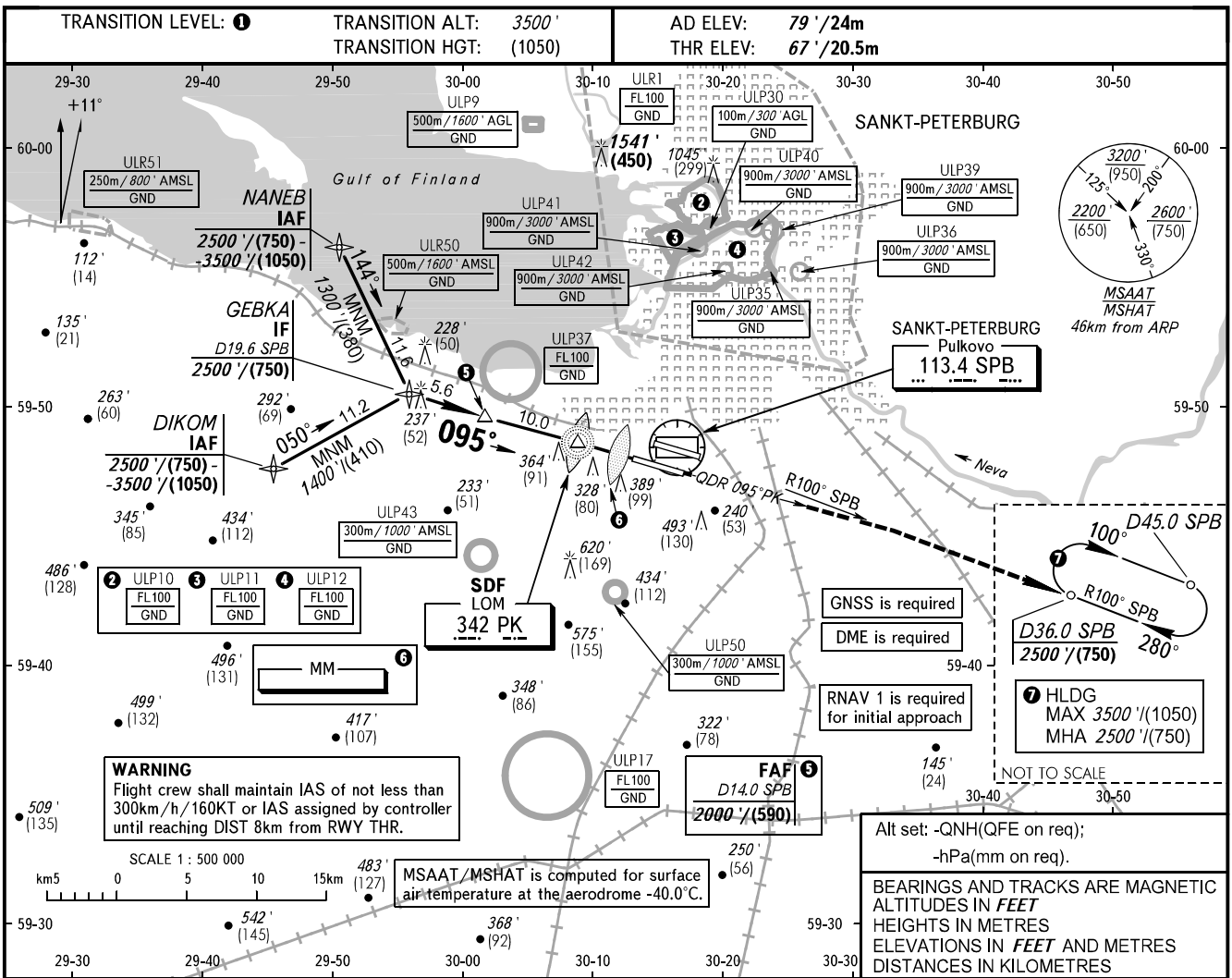


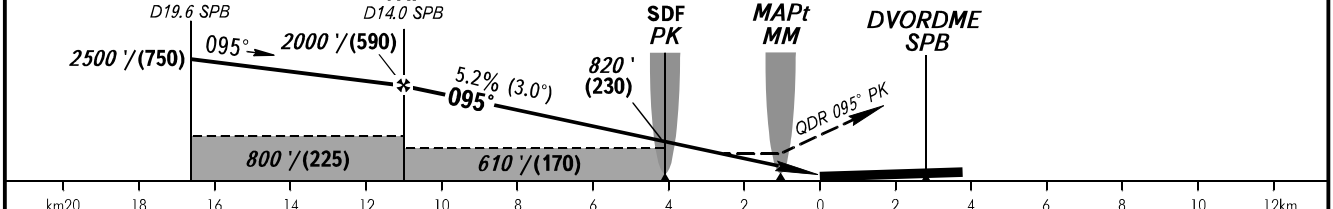
**INSTRUMENT
APPROACH
CHART - ICAO**

RADAR 120.300
TOWER 118.700

**SANKT-PETERBURG, RUSSIA
PULKOVO
NDB RWY 10R**



DME SPB	14.0	12.0	10.0	8.0	6.0
ALT/HGT	2000'/(590)	1680'/(490)	1330'/(385)	980'/(280)	630'/(170)



OCA(H)		A	B	C	D	<p>1 TRANSITION LEVEL: - FLO50 when QNH is 996 hPa (747mm mercury column) or above; - FLO60 when QNH is 960 hPa (720mm mercury column) or above, but less than 996 hPa (747mm mercury column); - FLO70 when QNH is less than 960 hPa (720mm mercury column).</p> <p>WARNING Visual manoeuvring to the north of the AD is PROHIBITED.</p> <p>NOTE: 1. The length of intermediate approach is less than 9.3km. 2. MAPt at MM. Timing not authorized for defining MAPt.</p>
Straight-in Approach		550' (490') (150)	550' (490') (150)	550' (490') (150)	550' (490') (150)	
	Circling	690' (610') (190)	790' (710') (220)	890' (810') (250)	1020' (940') (290)	

GROUND SPEED	km/h	150	180	210	240	270	300	330	360	390
	kt	80	100	110	130	145	160	180	195	210
RATE OF DESCENT	m/s	2.2	2.6	3.1	3.5	3.9	4.4	4.8	5.2	5.7
	ft/min	430	516	602	688	774	860	946	1032	1118

CHANGE: WARNING