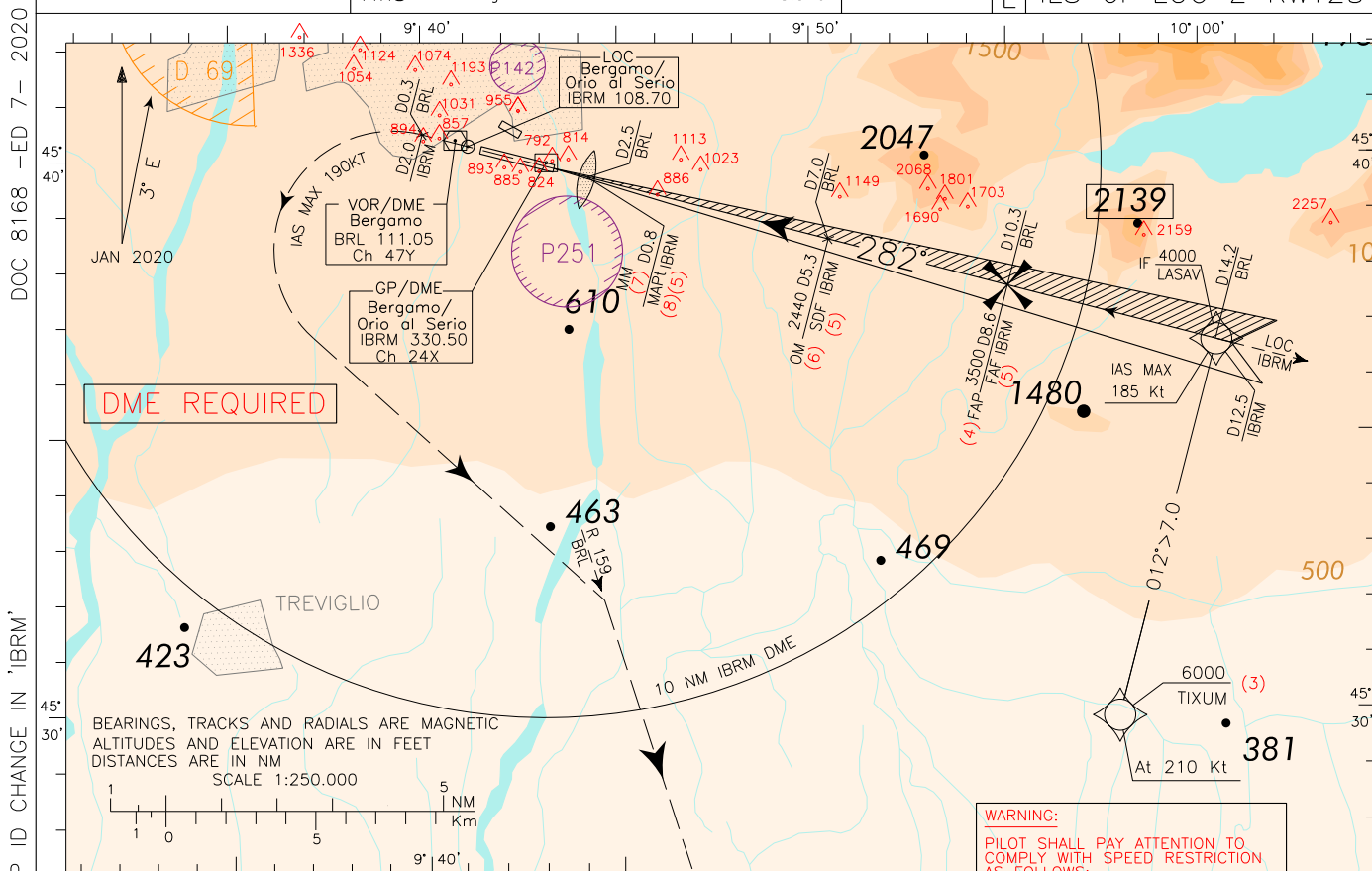


ICAO - INSTRUMENT APPROACH CHART

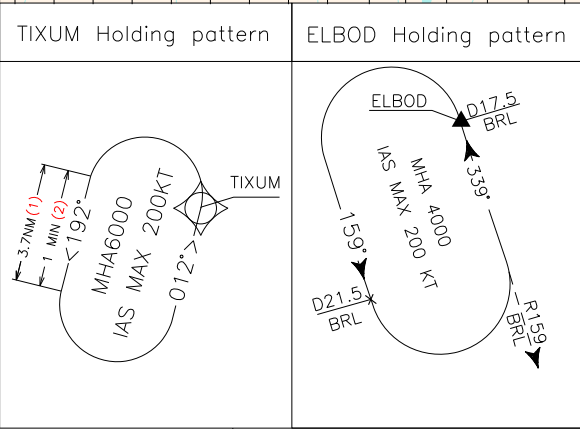
APP	Milano Radar	126.750 (126.300)	AD ELEV	782	L I M E BERGAMO/ORIO AL SERIO ILS or LOC Z RWY28
TWR	Orio TWR	125.875 (CH 134.105)			
ATIS	Bergamo ATIS Information	118.540			



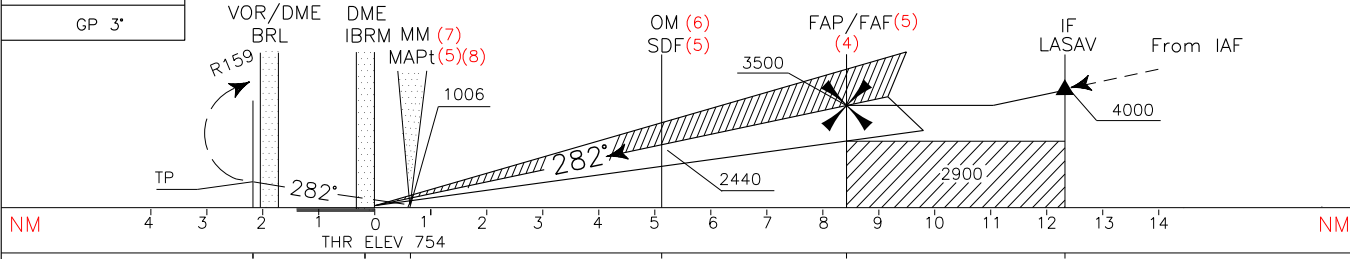
BEARINGS, TRACKS AND RADIALS ARE MAGNETIC  
ALTITUDES AND ELEVATION ARE IN FEET  
DISTANCES ARE IN NM  
SCALE 1:250.000

**WARNING:**  
PILOT SHALL PAY ATTENTION TO  
COMPLY WITH SPEED RESTRICTION  
AS FOLLOWS:  
IAS MAX 160KT AT 5NM FROM TDZ.  
FOR MORE DETAILS SEE  
ENR 2.1.1.1-4

**REMARKS:**  
(1) For RNAV system with holding  
functionality  
(2) For RNAV system without holding  
functionality  
(3) RNAV1/RNP1 transition to ILS/LOC  
(4) IAS MAX 175 Kt  
(5) Only for "LOC+DME"  
(6) OM replaced by 5.3 NM IBRM DME  
or 7.0 NM BRL DME.  
(7) MM provided also by 0.8 NM IBRM  
or 2.5 NM BRL DME.  
(8) In case of "LOC+DME" timing not  
authorized for defining the MAPt.



**MISSED APPROACH:** Proceed on TR 282° climbing to 4000 ft. At 2 NM IBRM DME (or 0.3 NM BRL DME) turn left (IAS MAX 190 kt) to join and follow RDL159 BRL VOR to ELBOD holding pattern. Hold between 17.5 NM and 21.5 NM, inbound track 339° (RDL 159 BRL VOR), left turn, IAS MAX 200 KT.



NM	4	3	2	1	0	0.8	5.3	8.6	12.5	13	14	NM
IBRM DME		D2		D0.8		D5.3		D8.6		D12.5		IBRM DME

STRAIGHT IN APPROACH	OCA (OCH)				WARNING 2: Circling RWY 10 available limited South of the RWY.	DIST IBRM DME	ALT(HGT)	FT PER MIN	GS	OM(5)-MM		MNM SECT ALT BRL VOR
	A	B	C	D						4.49 NM	0.62 NM	
ILS I (M.A.C.G. 2.5%)	970 (216)	982 (228)	990 (236)	1001 (247)		6	2670(1916)	530	100	2 : 41	0 : 22	
ILS II (M.A.C.G. 2.5%)	887 (133)	904 (150)	916 (162)	930 (176)		5	2350(1596)	640	120	2 : 15	0 : 19	
ILS II (M.A.C.G. 3.0%)	836 (82)	853 (99)	865 (111)	879 (125)		4	2030(1276)	745	140	1 : 55	0 : 16	
LOC+DME	1260 (506)					3	1715 (961)	850	160	1 : 41	0 : 14	
CIRCLING RWY 10	1600 (818)		1730 (948)			2	1395 (641)	955	180	1 : 29	0 : 12	

CHANGE: ATIS FREQUENCY UPDATED, 'BRM' LOC/DME/GP ID CHANGE IN 'IBRM'

**TABULAR DESCRIPTION****ILS or LOC Z RWY28 – Instrument Approach procedure****RNAV1/RNP1 transition to ILS/LOC**

Serial Number	Path Terminator	Waypoint Identifier	Fly Over	Course °M(°T)	Magnetic Variation	Distance (NM)	Turn Direction	Altitude (ft)	Speed Limit (kt)	VPA (°)/TCH (m)	Navigation Specification
010	IF	TIXUM	-	-	-	-	-	+6000	AT 210	-	RNAV1/RNP1(1)
020	TF	LASAV	-	012 (015.0)	-	7.0	-	+4000	-185	-	RNAV1/RNP1(1)

(1) For "monitoring and alerting" reasons, RNP1 specification is required in case of radar service unavailability or degradation

**Holding RNAV**

Path Terminator	Waypoint Identifier	Inbound Course °M (°T)	Leg Distance (NM) (1)	Timing(min.)/ Waypoint Distance (NM) (2)	Turn Direction	Minimum Altitude (FT)	Maximum Altitude (FL)	Speed Limit (kt)	Magnetic Variation (°)	Navigation Specification
HM	TIXUM	012 (015.0)	3.7	1/-	L	6000	-	-200	3 E	RNAV1/RNP1(3)

(1) RNAV system with holding functionality

(2) RNAV system without holding functionality

(3) For "monitoring and alerting" reasons, RNP1 specification is required in case of radar service unavailability or degradation