

VORTAC BAL 115.1 Chan 98	BAL 14.7 Arc	Rwy Idg 6997 TDZE 22 Apt Elev 22
--	---------------------------	---

VOR or TACAN RWY 15

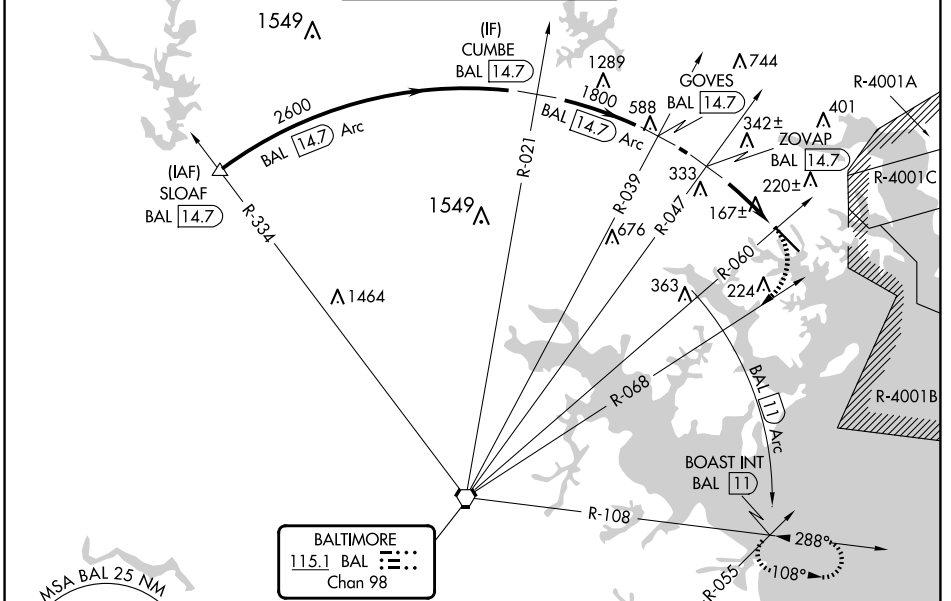
MARTIN STATE (MTN)

DME required.

⚠ Rwy 15 helicopter visibility reduction below 3/4 SM NA. When local altimeter setting not received, use Baltimore/Washington Intl Thurgood Marshall altimeter setting and increase all MDA 60 feet, and increase S-15 Cat B visibility 1/4 SM, Cat C/D 1/2 SM and Circling Cats B/C 1/4 SM. Circling NA northeast of Rwy 15-33.

MISSED APPROACH: Climbing right turn to 2500 on BAL VORTAC R-068 and BAL 11 DME Arc clockwise to BOAST INT/BAL 11 DME and hold.

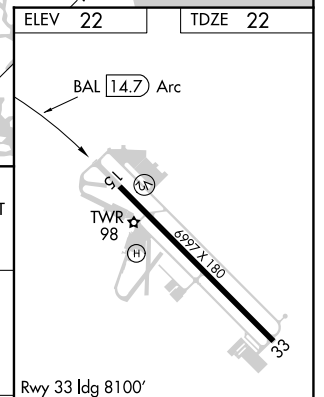
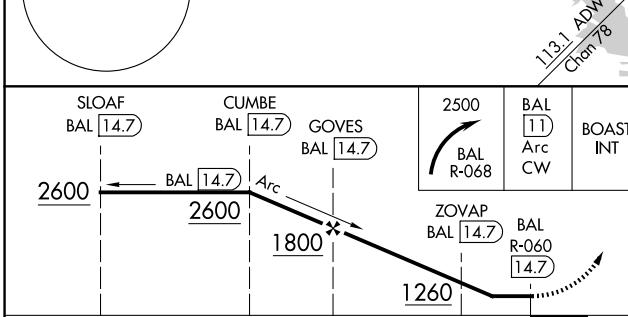
ATIS 124.925	POTOMAC APP CON 119.0 282.275	MARTIN TOWER ★ 121.3 (CTAF) 254.425	GND CON 121.8 253.4	UNICOM 122.95
------------------------	---	--	-------------------------------	-------------------------



NE-3, 20 MAR 2025 to 17 APR 2025

NE-3, 20 MAR 2025 to 17 APR 2025

ELEV 22	TDZE 22
----------------	----------------



CATEGORY	A	B	C	D
S-15	920-1 1/4	898 (900-1 1/4)	920-2 1/2	898 (900-2 1/2)
CIRCLING	920-1 1/4	898 (900-1 1/4)	920-2 3/4 898 (900-2 3/4)	920-3 898 (900-3)

Rwy 33 Idg 8100' (Military Operations only)
Rwy 15 take-off 8100' (Military Operations only)

HIRL Rwy 15-33 **1**
REL Rws 15 and 33 **1**