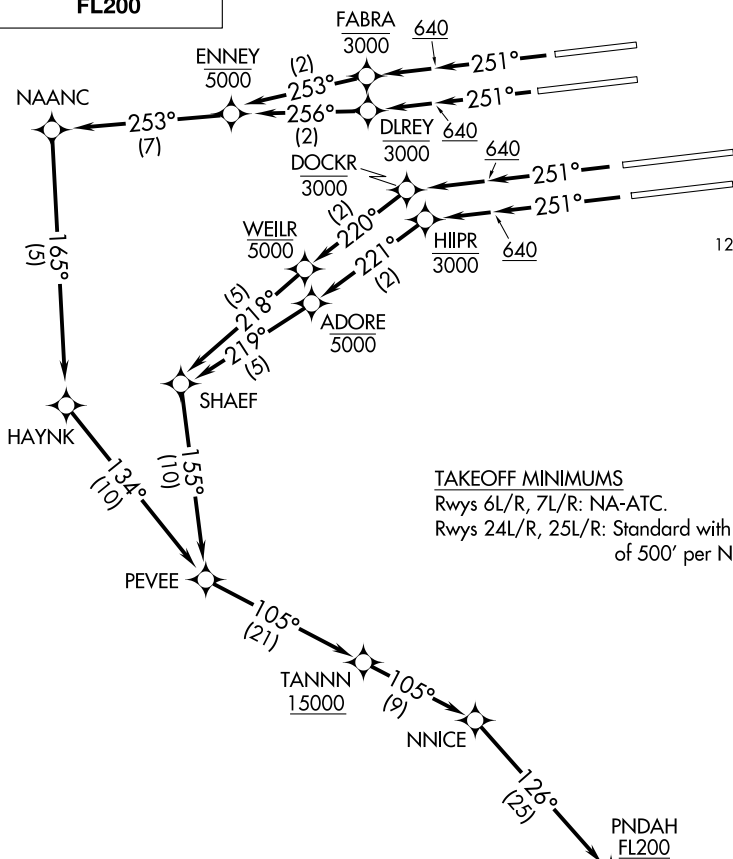


**TOP ALTITUDE:
FL200**



D-ATIS DEP 135.65
 CLNC DEL 120.35 327.0
 CPDLC
 GND CON (N) 121.65 327.0
 (S) 121.75 327.0
 (W) 121.4 327.0
 LOS ANGELES TOWER (N) 133.9 239.3
 (S) 120.95 379.1
 SOCAL DEP CON 124.3 363.2 (045°-224°)
 125.2 263.025 (225°-044°)

TAKEOFF MINIMUMS
 Rwy 6L/R, 7L/R: NA-ATC.
 Rwy 24L/R, 25L/R: Standard with minimum climb of 500' per NM to 640.

- NOTE: DME/DME/IRU or GPS required.
- NOTE: RADAR required.
- NOTE: RNAV 1.
- NOTE: Turbojet aircraft only.
- NOTE: Turn at HIIPR and DOCKR are required for ATC separation.

(NARRATIVE ON FOLLOWING PAGE)

NOTE: Chart not to scale.

SW-3, 20 MAR 2025 to 17 APR 2025

SW-3, 20 MAR 2025 to 17 APR 2025