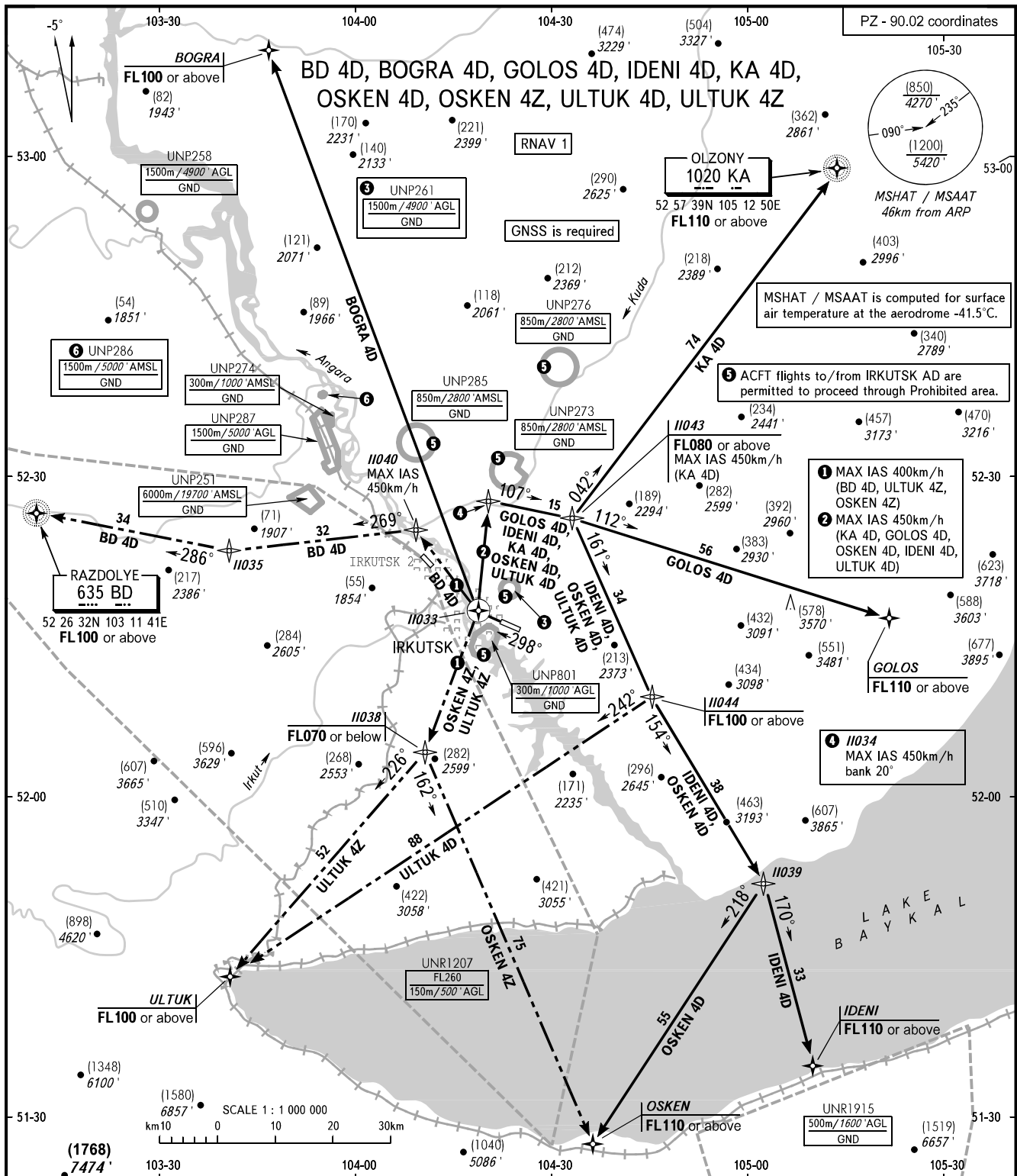


STANDARD DEPARTURE CHART
INSTRUMENT (SID) - ICAO

TRANSITION HGT: (1200)
TRANSITION ALT: 5420'

IRKUTSK, RUSSIA
IRKUTSK
RNAV RWY 30



MSHAT / MSAAT is computed for surface air temperature at the aerodrome -41.5°C.

ACFT flights to/from IRKUTSK AD are permitted to proceed through Prohibited area.

- 1 MAX IAS 400km/h (BD 4D, ULTUK 4Z, OSKEN 4Z)
- 2 MAX IAS 450km/h (KA 4D, GOLOS 4D, OSKEN 4D, IDENI 4D, ULTUK 4D)

4 I1034 MAX IAS 450km/h bank 20°

TOWER 118.100
RADAR 119.300
APPROACH 125.200

- WARNING:**
1. Turn before DER is PROHIBITED.
 2. MINIMUM CLIMB GRADIENTS (due to airspace structure):
GOLOS 4D, IDENI 4D, KA 4D, OSKEN 4D, ULTUK 4D: 5.3% up to FL080;
OSKEN 4Z, ULTUK 4Z: 4.9% up to FL070.
 3. MINIMUM CLIMB GRADIENT (due to obstacles):
OSKEN 4Z, ULTUK 4Z: 4.8% up to (225)/2330'.
 4. When restricted area UNR1207 is active, BD 4D, OSKEN 4Z, ULTUK 4Z, ULTUK 4D are AVBL after coordination with ATC.
 5. When UNP251 is active SID BD 4D is AVBL after coordination with ATC.

BEARINGS AND TRACKS ARE MAG.
ALTITUDES IN FEET, HEIGHTS IN METRES
ELEVATIONS IN METRES AND FEET
DISTANCES IN KILOMETRES

Alt set: -QFE(QNH on req);
-mm(hPa on req).