

HI-VOR or TACAN RWY 28R

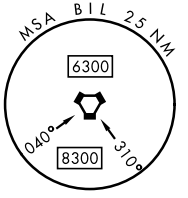
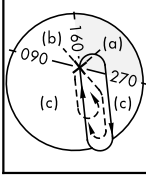
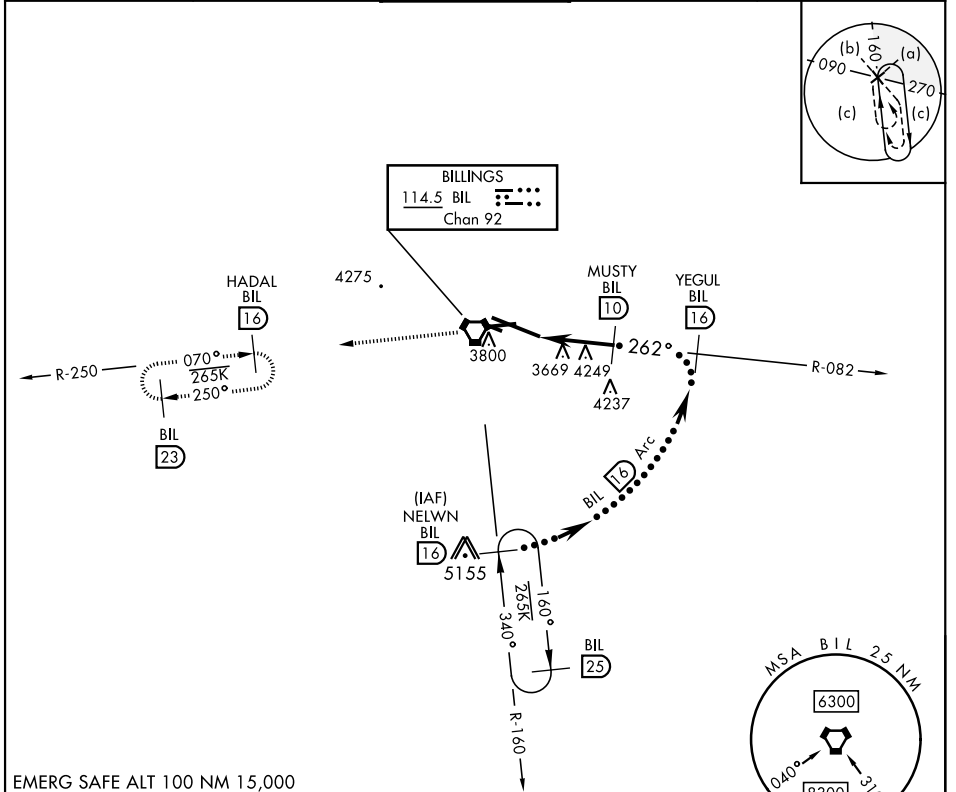
VORTAC BIL 114.5 Chan 92	APCH CRS 262°	Rwy Idg 10,518 TDZE 3517 Arprt Elev 3662	AL-48 [USAF]	BILLINGS LOGAN INTL (KBIL)
--	-------------------------	--	--------------	----------------------------

DME required.

▼

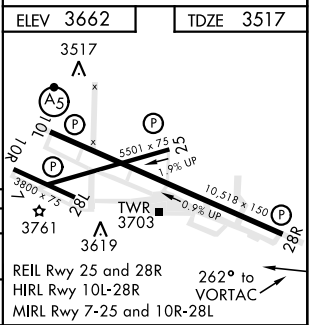
MISSED APPROACH: Climb to 9000 on BIL VORTAC R-082 to BIL VORTAC, and on BIL VORTAC R-250 to HADAL/16 DME and hold, continue Climb-in-Hold to 9000.

ATIS 126.3	BILLINGS APP CON 120.5 284.6	BILLINGS TOWER 127.2 257.8	GND CON 121.9	CLNC DEL 121.9
----------------------	--	--------------------------------------	-------------------------	--------------------------



EMERG SAFE ALT 100 NM 15,000

9000	BIL	HADAL BIL	NELWN R-160
↑	⬠	⬠	⬠
VORTAC	WYLED	MUSTY	FL200
LATDI (4.6)	(5.8)	(6.9)	(10)
2.3 NM	3.1 NM	4260	5200
262°	262°	262°	262°
2.88°	2.88°	2.88°	2.88°
TCH 56	TCH 56	TCH 56	TCH 56
CATEGORY	C	D	E
S-28R	3940-1½	423 (300-1½)	
CIRCLING	4180-1½ 518 (600-1½)	4580-3	918 (1000-3)



HI-VOR or TACAN RWY 28R

NW-1, 20 MAR 2025 to 17 APR 2025

NW-1, 20 MAR 2025 to 17 APR 2025