

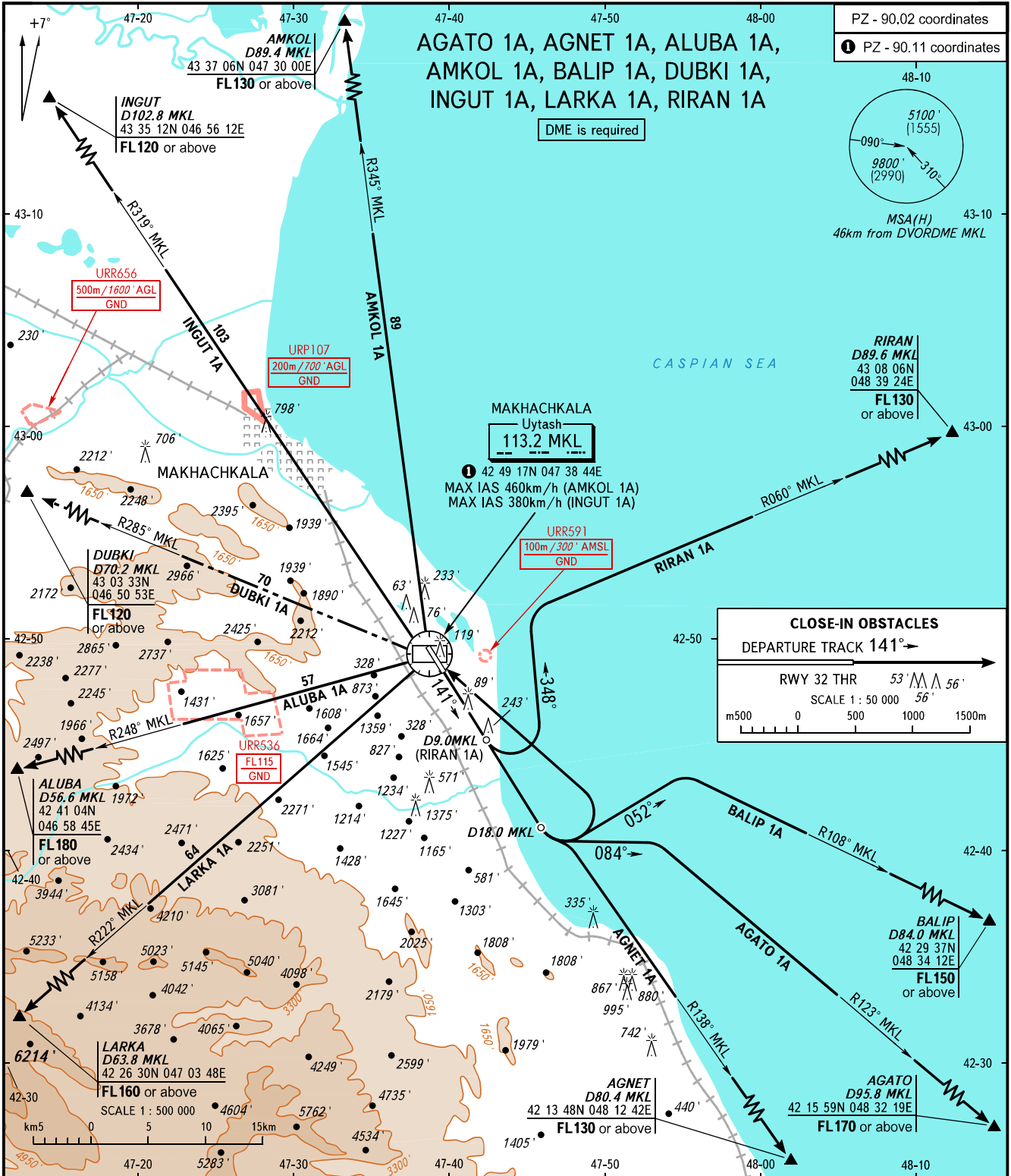
STANDARD DEPARTURE CHART
INSTRUMENT (SID) - ICAO

TRANSITION
ALTITUDE : 10000'

MAKHACHKALA, RUSSIA

UYTASH

RWY 14



START 121.300
RADAR 121.300
APPROACH 119.700

The minimum climb gradients are as follows (required due to the airspace structure):

- 5.4% up to FL170 for AGATO 1A;
- 5.1% up to FL130 for AGNET 1A;
- 5.2% up to FL180 for ALUBA 1A;
- 3.5% up to FL130 for AMKOL 1A;
- 5.1% up to FL150 for BALIP 1A;
- 4.2% up to FL160 for LARKA 1A;
- 3.8% up to FL130 for RIRAN 1A.

WARNING:

1. ALUBA 1A, LARKA 1A are not AVBL when URR536 is active.
2. Radar control is required when URR533 is active.
3. DUBKI 1A is not AVBL when URR533, URR536 are active.

BEARINGS AND TRACKS ARE MAGNETIC
ALTITUDES AND ELEVATIONS IN FEET
HEIGHTS IN METRES
DISTANCES IN KILOMETRES

Alt set: -QNH(QFE on req);
-hPa(mm on req).

(required due to obstacles):

- 3.5% up to 9400' for ALUBA 1A;
- 3.4% up to 9500' for LARKA 1A.

CHANGE: New chart