

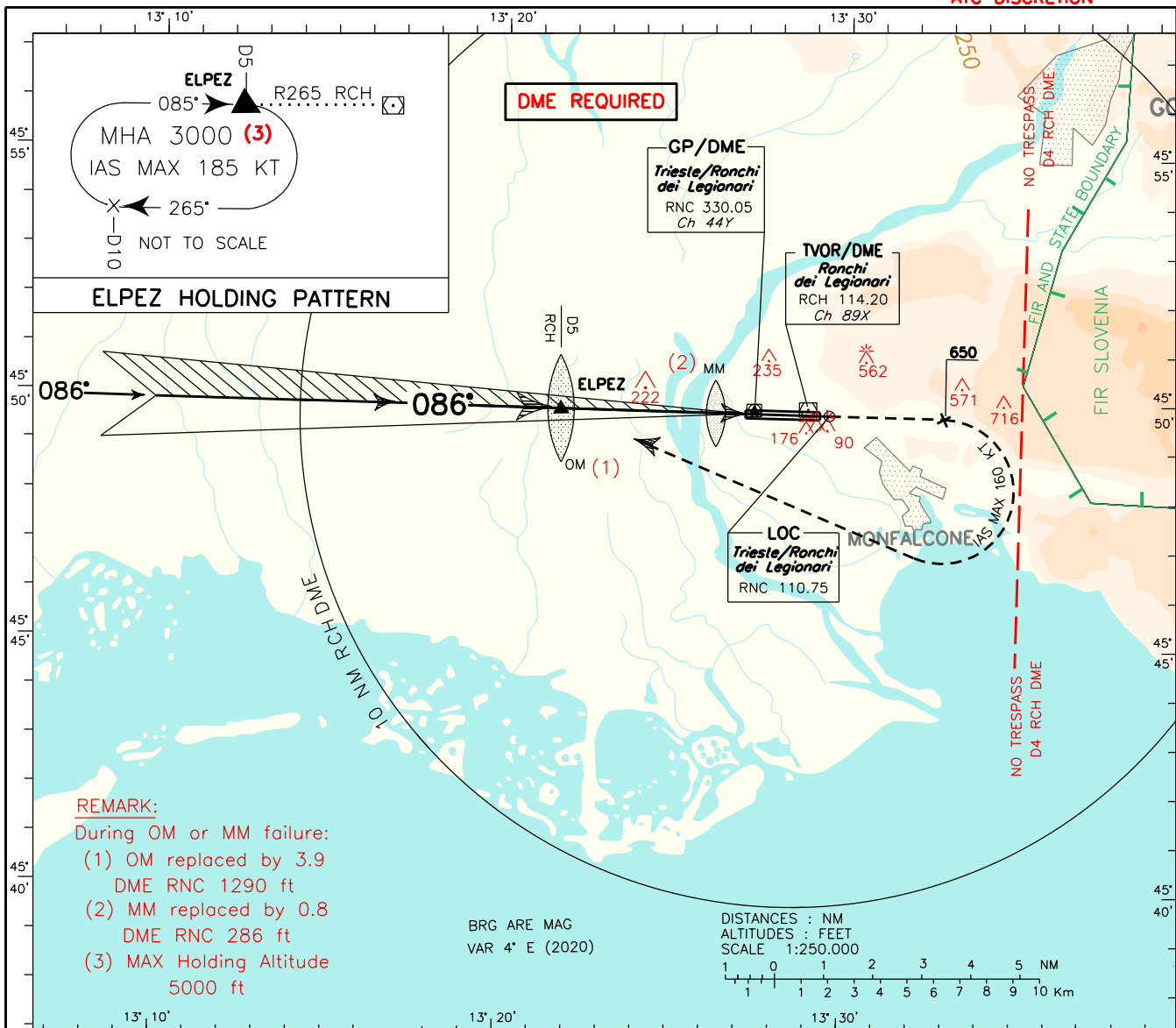
**INSTRUMENT APPROACH CHART - ICAO**

AERODROME ELEV **40**

APP *Padova Radar* **119.175**  
TWR *Ronchi TWR* **130.205**

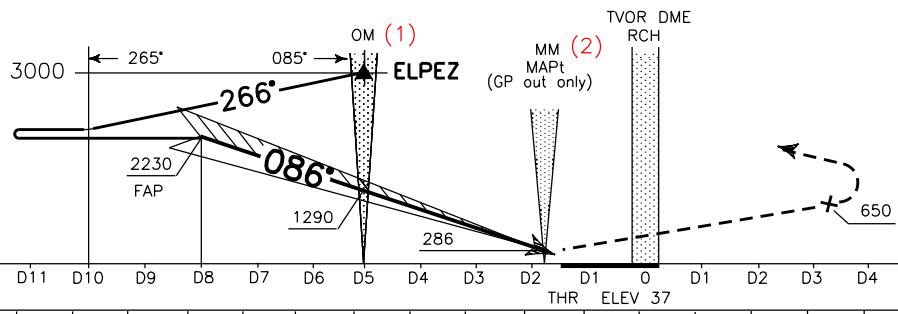
**TRIESTE RONCHI DEI LEGIONARI LIPO**  
ILS X RWY 09  
**ATC DISCRETION**

DOC.8168 ED.7 - 2020 - AMDT 10  
CHANGE: MINIMA OCA (OCH) FOR ILS CAT 2 WITH MNM M.A. CLIMB GRADIENT 3% UPDATED



TRANSITION ALT 6000 MISSED APPROACH: Proceed on track 086° climbing to 3000 ft. Leaving 650 ft turn right (IAS MAX 160 kt during turn) bound to ELPEZ holding pattern. Due to State boundary remain within 4 NM RCH DME during turn.

RDH 17 M  
GP 3'



D17	D16	D15	D14	D13	D12	D11	D10	D9	D8	D7	D6	D5	D4	D3	D2	D1	0	D1	D2	D3	D4	D5	D6
RCH DME																	RCH DME						
RNC DME																	RNC DME						

OCA (OCH)		A	B	C	D	
STRAIGHT IN APPROACH	M.A. 3% M.A. 2.5%	ILS CAT.1	280 (243)	290 (253)	300 (263)	310 (273)
		ILS CAT.2	174 (137)	186 (149)	203 (166)	225 (188)
		ILS CAT.1	217 (180)	227 (190)	237 (200)	247 (210)
		ILS CAT.2	103 (66)	115 (78)	132 (95)	154 (117)
GP INOP		480 (440)				
CIRCLING (*)		800 (760)		1170 (1130)	1360 (1320)	

(\*)CIRCLING SECTOR:  
Only South of RWY:  
  
for CAT C/D ACFT remain within 4 NM RCH DME.

FT	GS	OM-MM	MM-THR
PER		3.16 NM	0.60 NM
MIN		2 : 22	0 : 27
425	80	1 : 54	0 : 22
530	100	1 : 35	0 : 18
635	120	1 : 21	0 : 15
740	140	1 : 11	0 : 14
850	160		

MIN SECT ALT

RCH VOR