

STANDARD DEPARTURE CHART - INSTRUMENT

RJST / MATSUSHIMA

SID and TRANSITION

WEST FOUR DEPARTURE

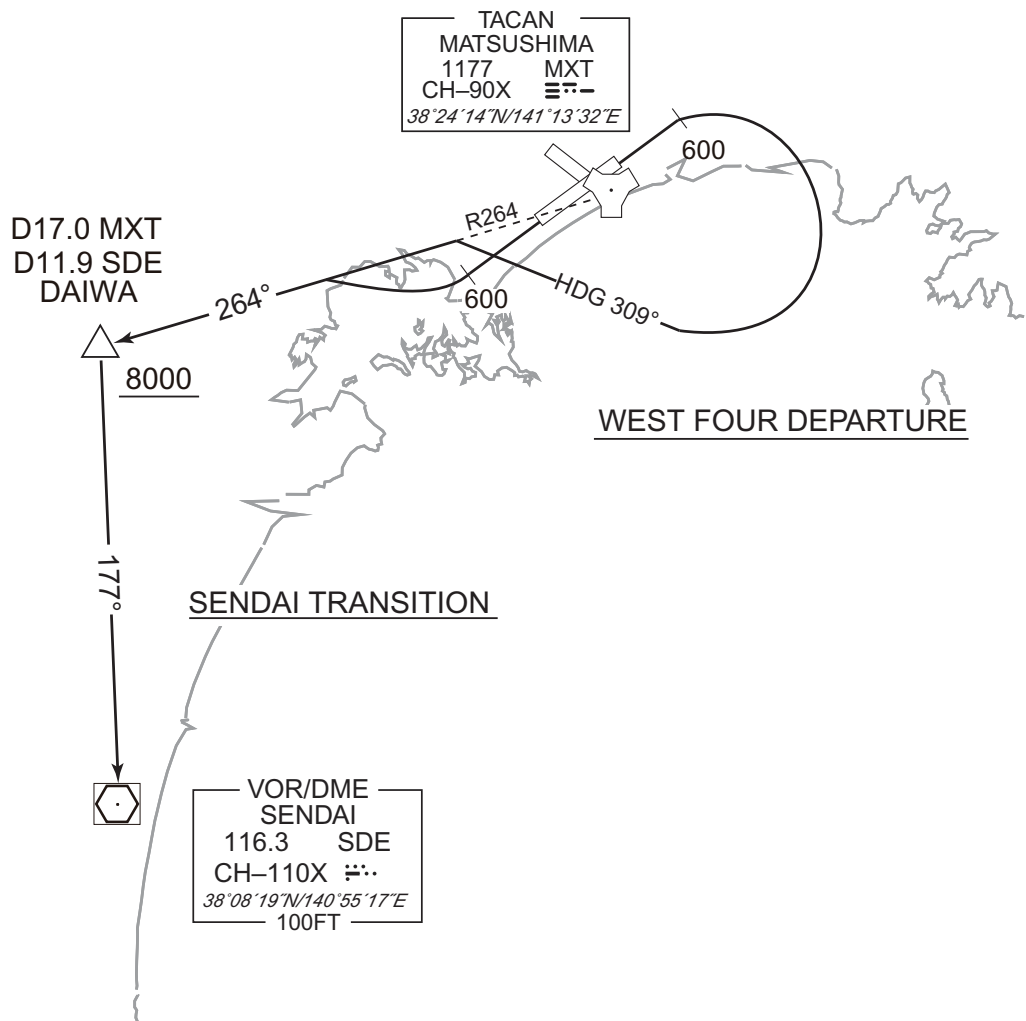
RWY07 : Climb RWY HDG to 600FT, turn right HDG 309°...
 RWY25 : Climb RWY HDG to 600FT, turn right,...
 ...to intercept and proceed via MXT R264 to DAIWA.
 Cross DAIWA at or above 8000FT.

Note RWY07 : 4.0% climb gradient required up to 600FT.
 OBST ALT 919FT located at 5.8NM 080° FM end of RWY07.

SENDAI TRANSITION

From over DAIWA, via SDE R357 to SDE VOR/DME.

CHANGE : PROC renamed(WEST FOUR DEPARTURE), PROC course(WEST FOUR DEPARTURE), NIIGATA TRANSITION abolished, ALT restriction for RWY07. Note(WEST FOUR DEPARTURE).



INTENTIONALLY LEFT BLANK