

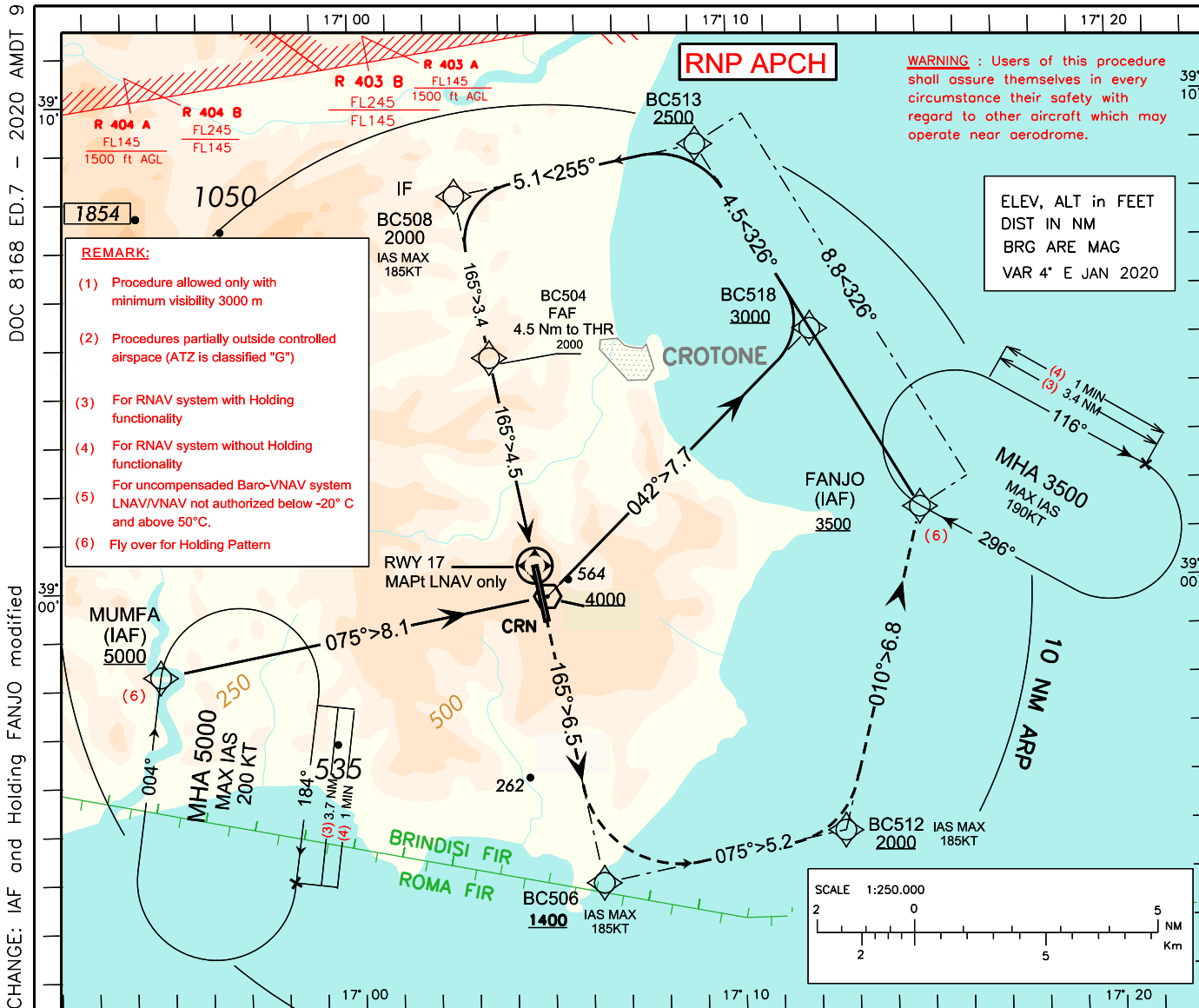
**CROTONE
LIBC
RNP RWY 17**

**INSTRUMENT
APPROACH
CHART - ICAO**

**AERODROME ELEV
522**

**EGNOS
CH 92635
E17A**

APP Roma Radar **118.800 (133.250)**
AFIS Crotone Aerodrome INFO **119.105**

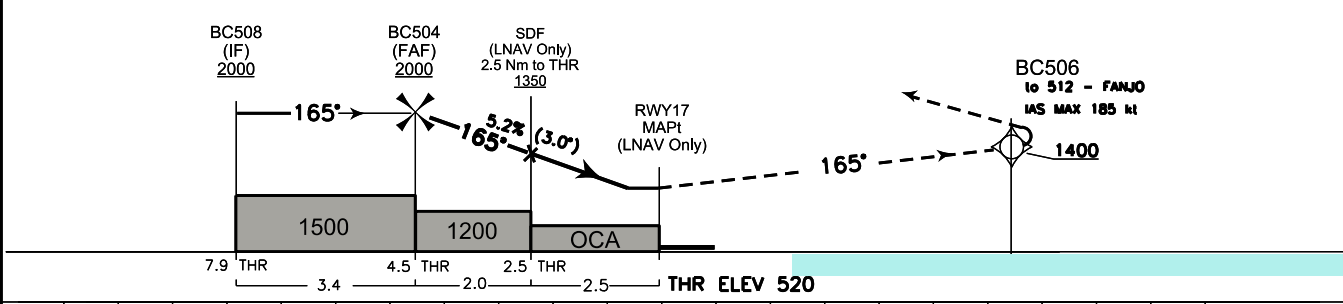


DOC 8168 ED.7 - 2020 AMDT 9

CHANGE: IAF and Holding FANJO modified

TRANSITION ALT 6000 **MISSED APPROACH:** Continue RWY heading to BC506 (MCA 1400ft, IAS MAX 185KT), then proceed via BC512 - FANJO to join missed approach holding pattern at 3500FT.

TCH 15M



NM 11 10 9 8 7 6 5 4 3 2 1 0 1 2 3 4 5 6 7 8 9 10 NM

OCA (OCH)		A	B	C	D	GS	FT PER MIN	THR 17	ALT (HGT)	MNM SECT ALT 25 NM ARP
STRAIGHT IN APPROACH	LPV	770 (250)	770 (250)	770 (250)	781 (261)					
	LNAV/VNAV	890 (370)	901 (381)	910 (390)	920 (400)	100	529	D 4	1842 (1322)	
	LNAV	1010 (488)				120	634	D 3	1524 (1005)	
						140	740	D 2	1206 (686)	
					160	846	D 1	888 (368)		
CIRCLING		1350(828)	1370(848)	1540 (1018)						