

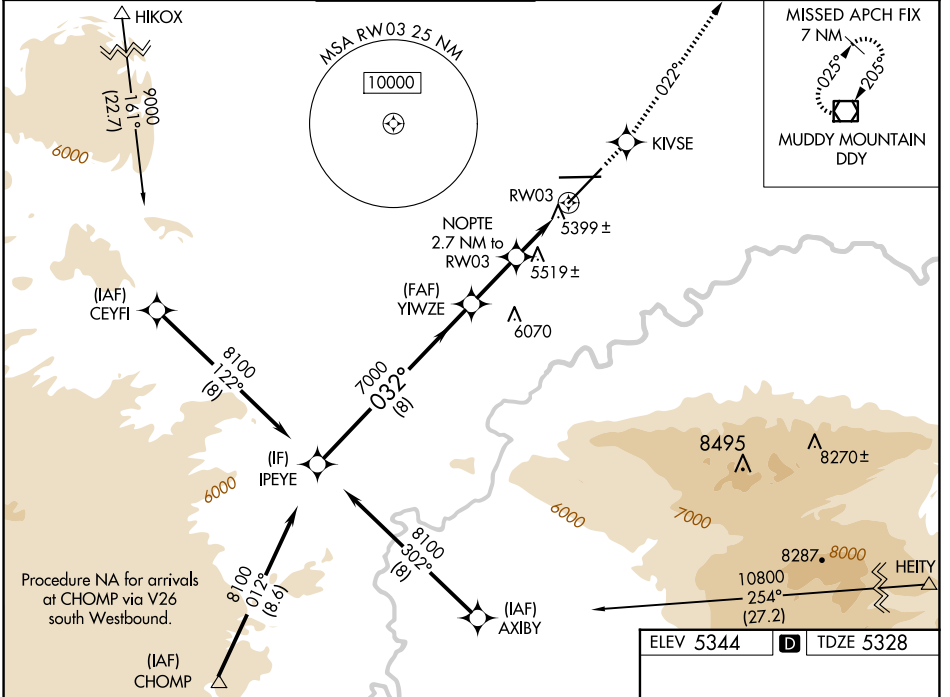
WAAS CH 73006 W03A	APP CRS 032°	Rwy Idg 10165 TDZE 5328 Apt Elev 5344
--	------------------------	--

RNAV (GPS) RWY 3

CASPER/NATRONA COUNTY INTL (CPR)

⚠ For inoperative MALS, increase LPV all Cats visibility to 1 mile. ⚠ For uncompensated Baro-VNAV systems, LNAV/VNAV NA below -25°C (-13°F) or above 38°C (100°F). DME/DME RNP-0.3 NA.	MALS 	MISSED APPROACH: Climb to 7500 direct KIVSE and via track 022° to DDY VOR/DME and hold.
--	----------	---

ATIS 126.15	CASPER APP CON * 120.65 354.1	CASPER TOWER * 118.3 (CTAF) 0 257.8	GND CON 121.9	CLNC DEL 121.9 257.8	UNICOM 122.95
-----------------------	---	---	-------------------------	--------------------------------	-------------------------



NW-1, 20 MAR 2025 to 17 APR 2025

NW-1, 20 MAR 2025 to 17 APR 2025

Procedure Turn NA	8100	032°	7000	YIWZE	NOPT 2.7 NM to RW03	7500 KIVSE	tr 022°	DDY
GP 3.00°					*1.3 NM to RW03			
TCH 52					*6240			
	8 NM		2.3 NM		1.4 NM	1.3 NM		
CATEGORY	A	B	C	D				
LPV DA		5643/24	315 (300-½)					
LNAV/VNAV DA		5691/40	363 (400-¾)					
LNAV MDA	5780/24	452 (500-½)	5780/40 452 (500-¾)	5780/50 452 (500-1)				
CIRCLING	5780-1 436 (500-1)	5800-1 456 (500-1)	5860-1½ 516 (600-1½)	6200-2¾ 856 (900-2¾)				

