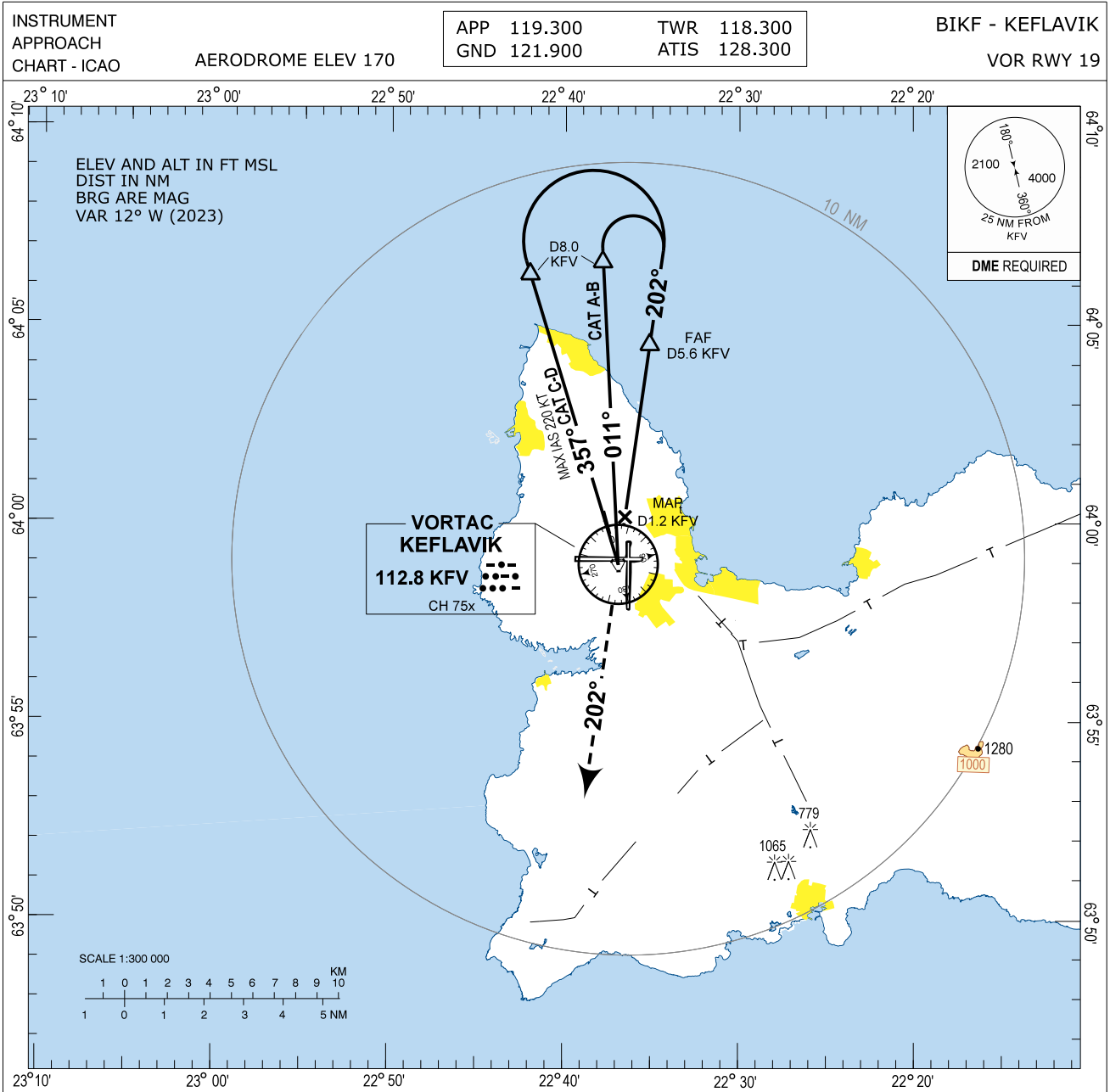


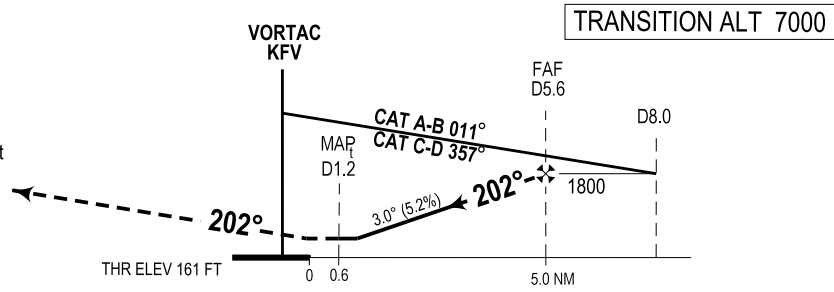
Keflavik VOR RWY 19 Instrument Approach Chart - ICAO



CHANGES: RESTRICTED AREA BIR2 REMOVED

**MISSED APPROACH:**  
Climb direct KFV VOR continue on R 202 to 3000.  
Expect vectoring by KEFLAVIK APP.

**RCF:**  
Continue on radial 202, passing D20.0 KFV turn right  
direct KFV at 3000 for new approach.



OCA (H)	A	B	C	D	Remarks
VOR - DME	530 (369)	550 (389)	580 (419)	600 (439)	
CIRCLING	600 (430)	670 (500)	870 (700)	940 (770)	

DIST TO KFV	2	3	4	5
ALTITUDE	670	985	1305	1620

Timing not authorized for defining MAP

GS	kt	80	100	120	140	160	180
FAF-D1.2 KFV (4.4 NM)	MIN:SEC	3:18	2:38	2:12	1:53	1:39	1:28

Rate of descent (5.2%)	ft/MIN	420	530	630	740	840	950
------------------------	--------	-----	-----	-----	-----	-----	-----

THIS PAGE INTENTIONALLY LEFT BLANK