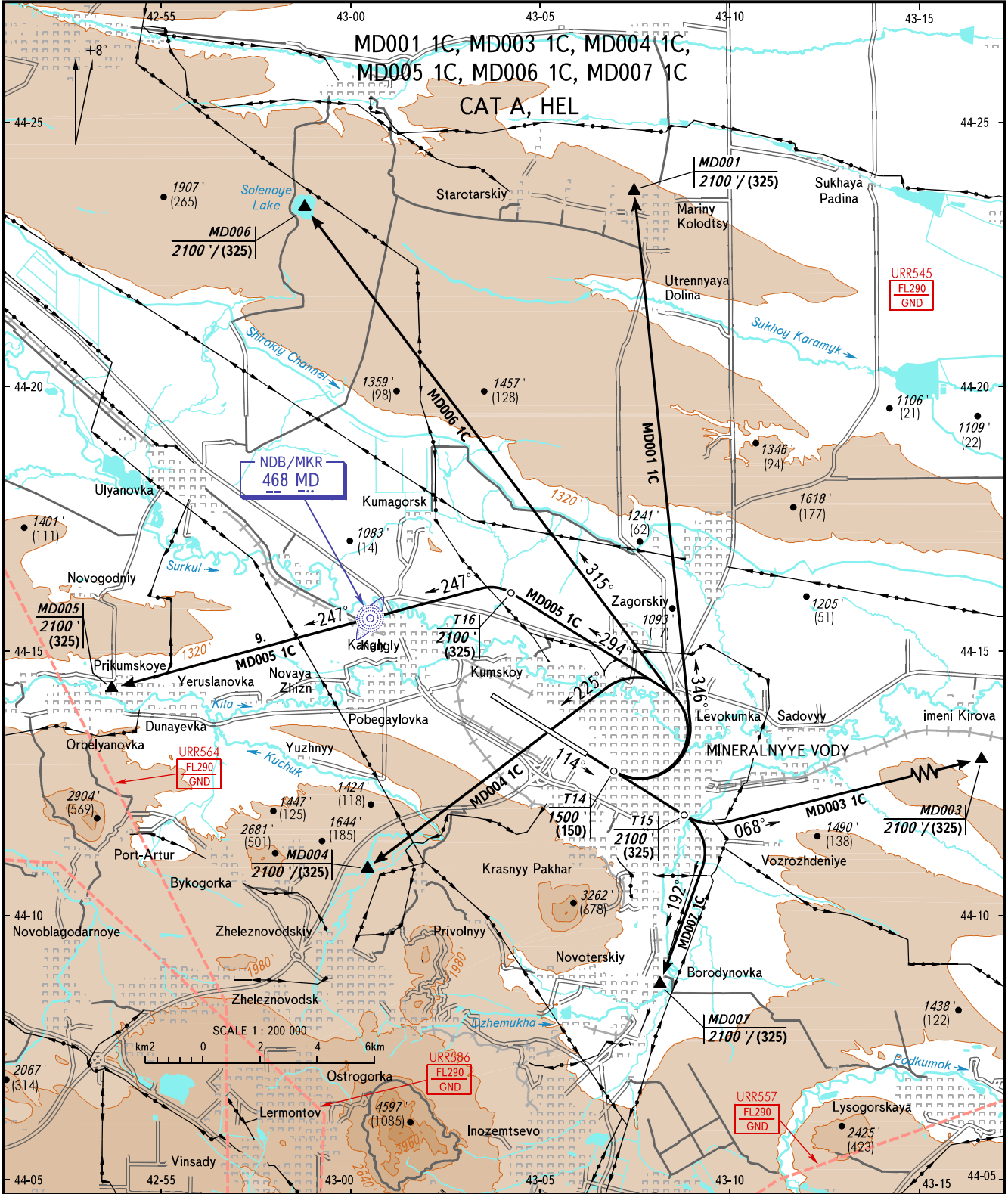


VFR
DEPARTURE CHART

TRANSITION ALT: 9000'
TRANSITION HGT: (2430)

MINERALNYIYE VODY, RUSSIA
MINERALNYIYE VODY
RWY 11



START	128.000
RADAR	120.700
APPROACH	119.300

BEARINGS AND TRACKS ARE MAGNETIC	Alt set: -QNH(QFE on req);
ALTITUDES AND ELEVATIONS IN FEET	-hPa(mm on req).
HEIGHTS IN METRES	
DISTANCES IN KILOMETRES	

SCALE 1 : 200 000

km 0 2 4 6

CHANGE: New chart