

**PANS-OPS  
 INSTRUMENT APPROACH CHART**

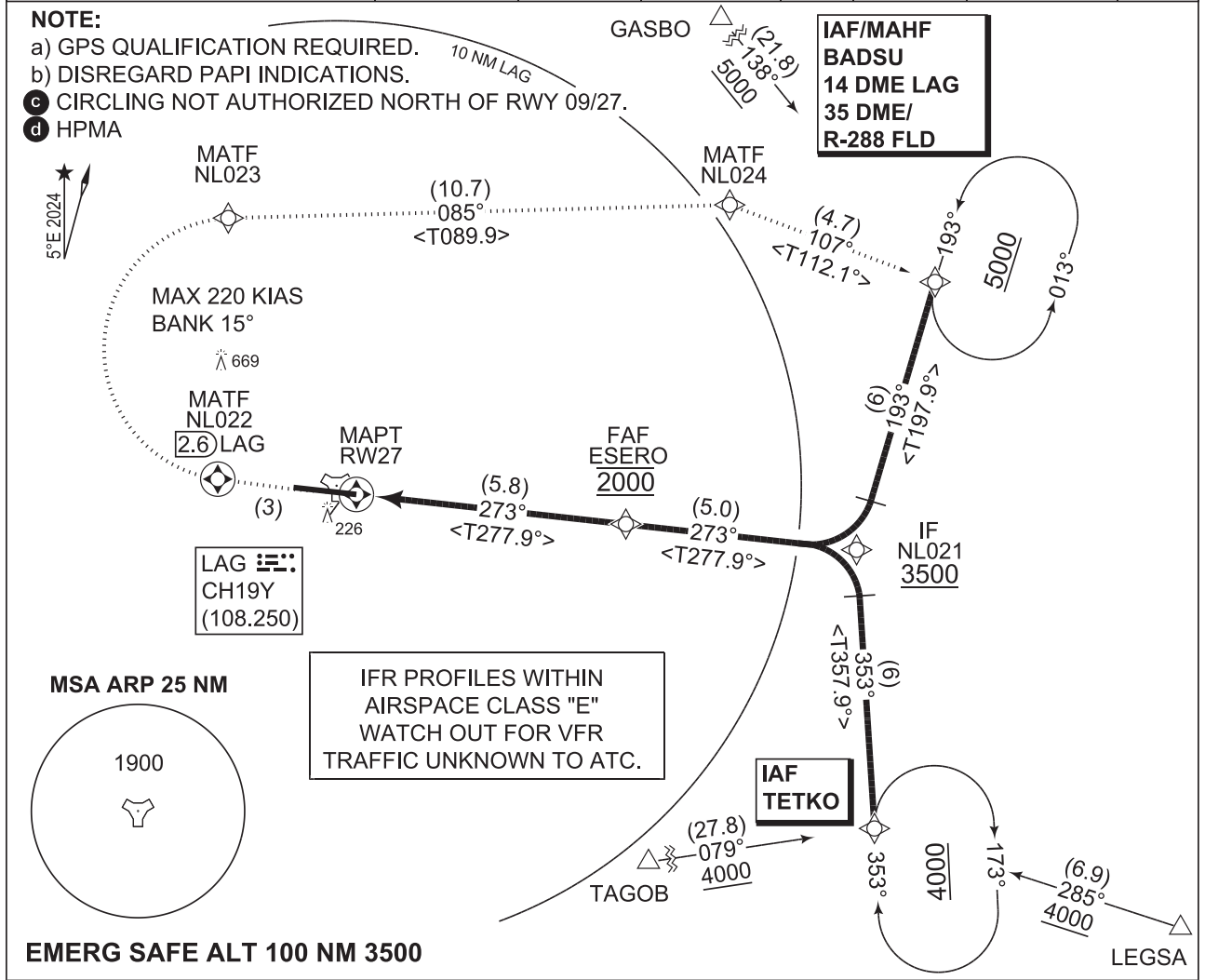
**RNAV (GPS) RWY 27  
 LAAGE (ETNL)**

AD ELEV 140

BREMEN RADAR 259.825 124.175		LAAGE RADAR 376.400 133.105		LAAGE TOWER 336.400 118.430		LAAGE ATIS 134.605	
TACAN LAG CH19Y (108.250)		APP COURSE 273°	FAF ALT 2000	DESCENT GR 3.0° / 5.2%	MDA 560	THR ELEV 111	ALS-LENGTH 900 M
			LDA 8268				

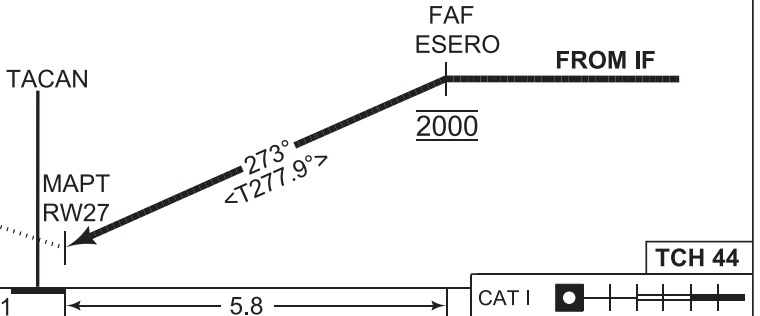
**NOTE:**

- a) GPS QUALIFICATION REQUIRED.
- b) DISREGARD PAPI INDICATIONS.
- c) CIRCLING NOT AUTHORIZED NORTH OF RWY 09/27.
- d) HPMa



**MISSED APPROACH TA 5000**

- Non TACAN equipped acft:  
Climb straight ahead to 2.6 DME LAG, RT, on track 085° to intercept R-288 FLD, on R-288 FLD to BADSU climbing to 5000 ft.
- TACAN equipped acft:  
Execute TACAN missed approach.  
GPS: NL022 - NL023 - NL024 - BADSU [A5000]



Distance THR	5	4	3	2	1	
Altitude	1750	1430	1120	800	480	
THR ELEV 111						5.8
						CAT I

CATEGORY	A	B	C	D	E
LNAV 27	560 - 0.8 449 (500-0.8/1.6)		560 - 1.2 449 (500-1.2/2.0)	560 - 1.6 449 (500-1.6/2.4)	
CIRCLING	550 - 1.9 410 (500-1.9)	640 - 2.3 500 (500-2.3)	1180 - 4.9 1040 (1100-4.9)	1070 - 4.3 930 (1000-4.3)	

**RNAV (GPS) RWY 27** 53°55.09'N 101°16.76'E **LAAGE (ETNL)**