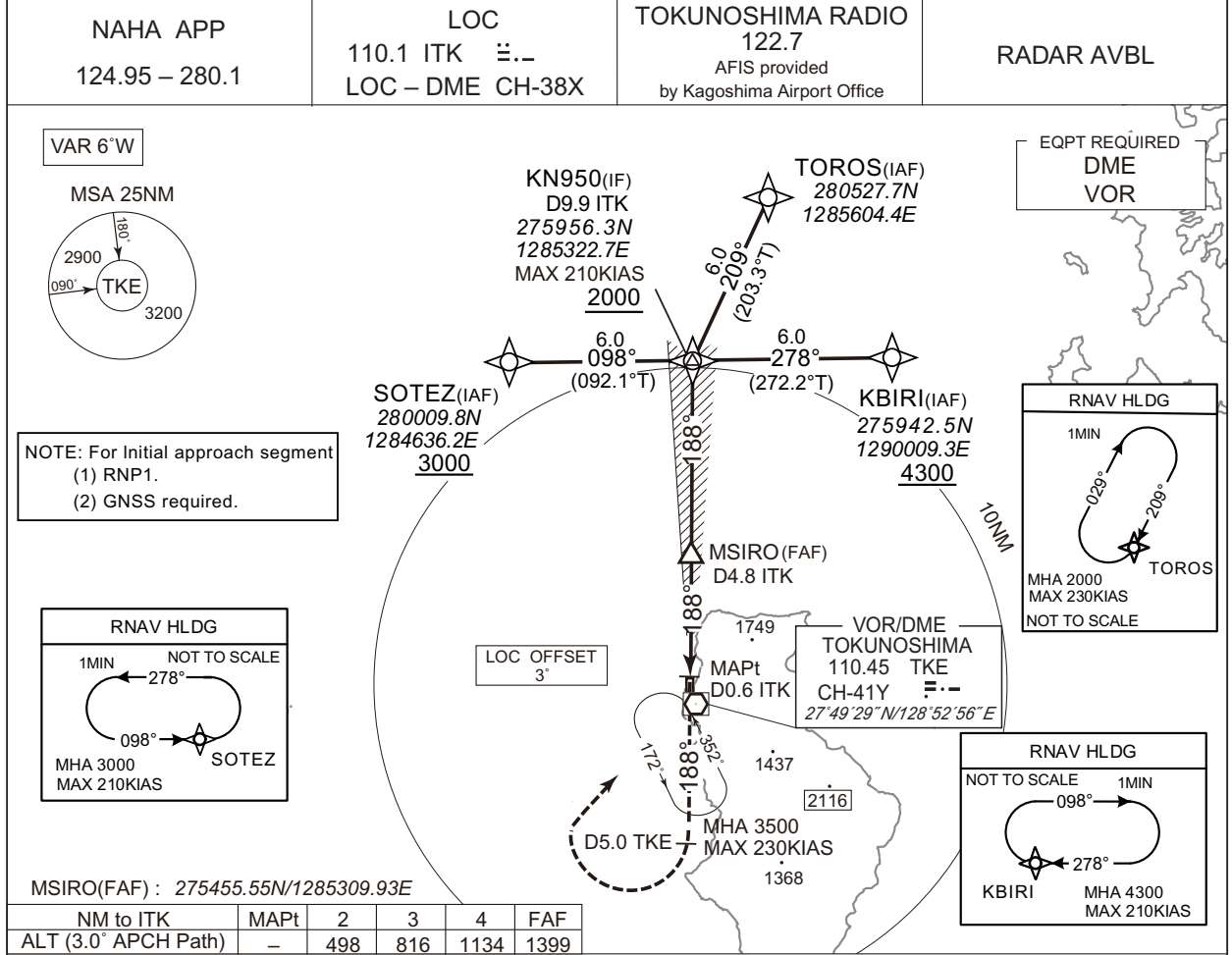


INSTRUMENT APPROACH CHART

RJKN / TOKUNOSHIMA

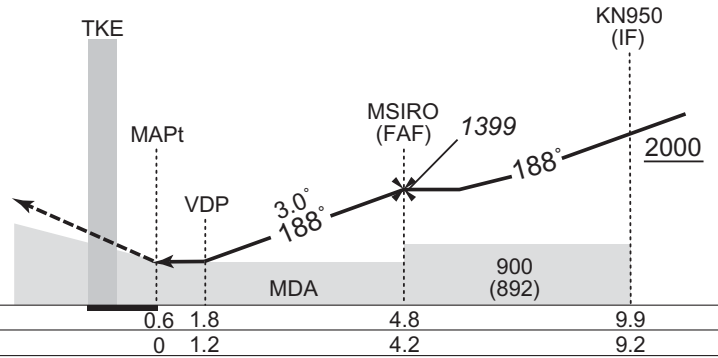
LOC Z RWY19



CHANGE : Navigation Specification(Basic RNP1 → RNP1).

MISSED APPROACH
Climb via TKE R188 to 5.0DME,
turn right, direct to TKE VOR/DME
and hold at 3500FT.
Contact NAHA APP.

Timing not authorized for defining the MAPt.



Missed APCH climb gradient MNM 5.0%

MINIMA		THR elev. 14	AD elev. 8	
CAT	CIRCLING			
	MDA(H)	CMV	MDA(H)	VIS
A	430 (422)	900	730 (722)	1600
B		1000	990 (982)	
C		1400	1190 (1182)	2400
D			1480 (1472)	3200

MINIMA with Missed APCH climb gradient of 2.5% are not established.
Circling to WEST side of RWY only.