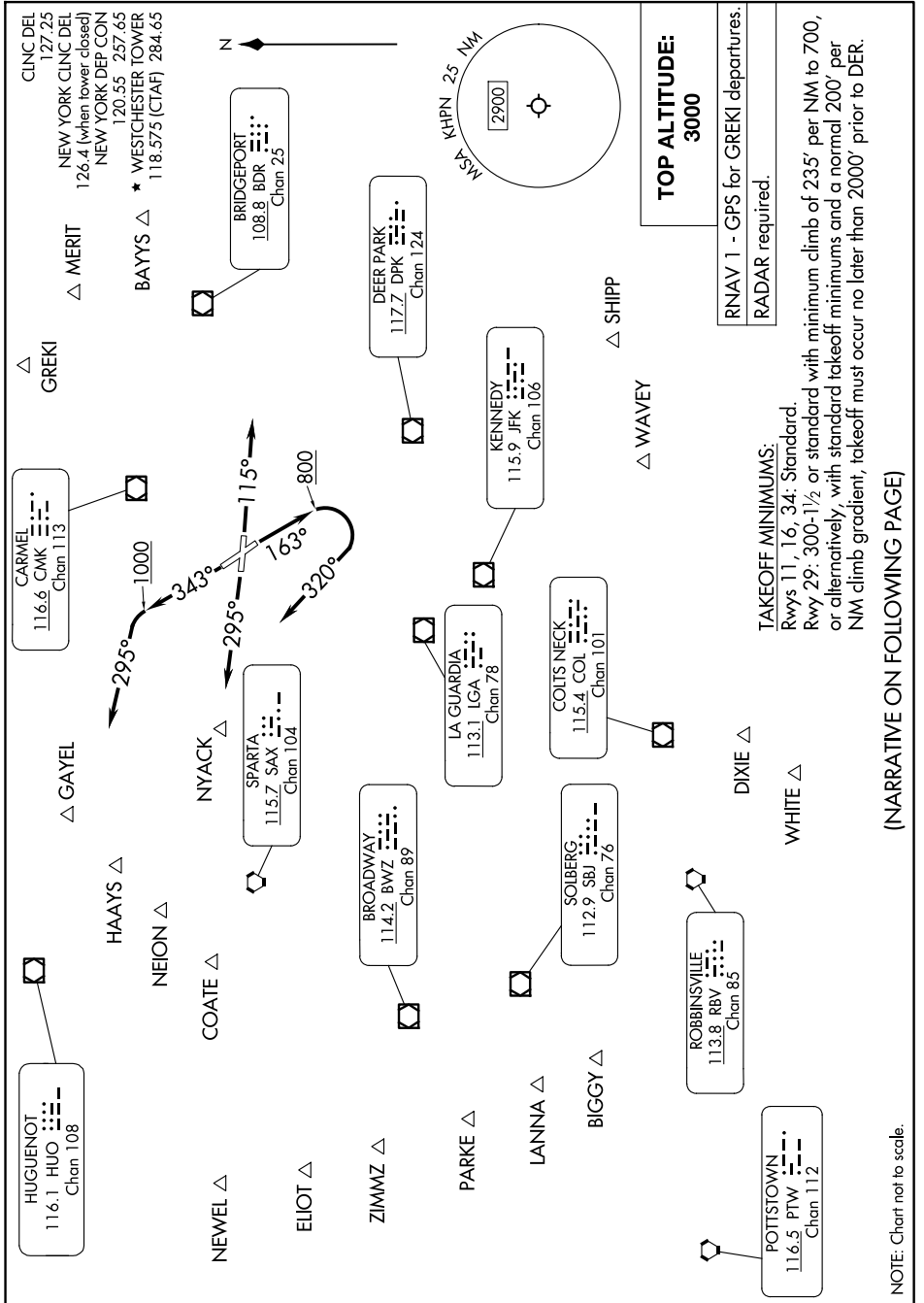


# WESTCHESTER EIGHT DEPARTURE

WHITE PLAINS, NEW YORK

NE-2, 20 MAR 2025 to 17 APR 2025



### TAKEOFF MINIMUMS:

Rwys 11, 16, 34: Standard.  
 Rwy 29: 300-1½ or standard with minimum climb of 235' per NM to 700, or alternatively, with standard takeoff minimums and a normal 200' per NM climb gradient, takeoff must occur no later than 2000' prior to DER.

(NARRATIVE ON FOLLOWING PAGE)

NOTE: Chart not to scale.

NE-2, 20 MAR 2025 to 17 APR 2025

# WESTCHESTER EIGHT DEPARTURE