

LOC/DME I-RDM <b>109.1</b> Chan <b>28</b>	APP CRS <b>226°</b>	Rwy Idg TDZE Apt Elev	<b>7031</b> <b>3067</b> <b>3082</b>
---	------------------------	-----------------------------	---

# ILS or LOC RWY 23

ROBERTS FLD (RDM)

DME required.

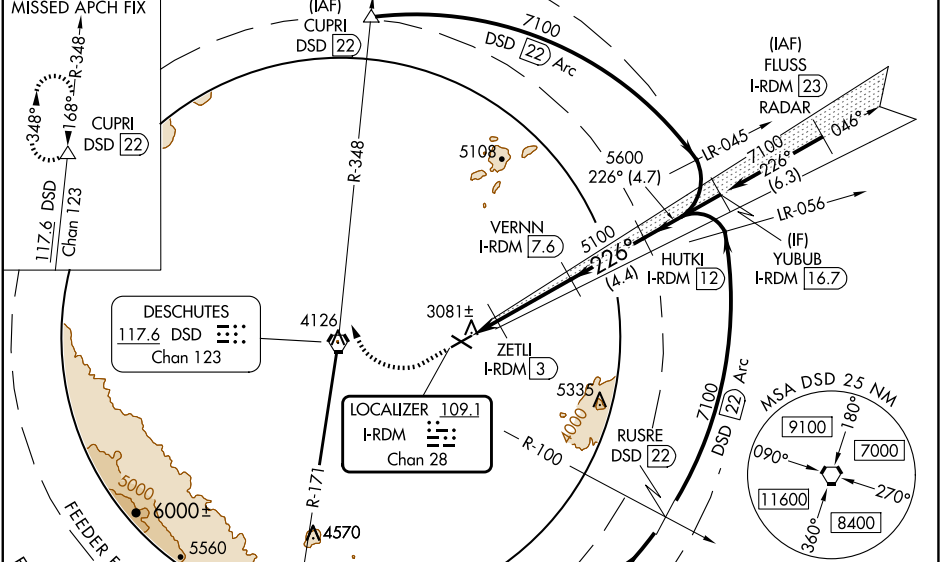
**Autopilot coupled approach NA below 4370. When local altimeter setting not received, use Bend altimeter setting increase S-ILS 23 DA to 3348 feet; increase all MDAs 100 feet increase S-LOC 23 Cat C/D/E visibility 3/8 SM and Circling Cats C/D/E visibility 1/2 SM. For inop ALS, increase S-ILS 23 Cat E visibility to 3/4 SM and S-LOC 23 Cat C/D/E visibility to 1 SM. For inop ALS when using Bend altimeter setting increase S-ILS 23 all Cats visibility to 7/8 SM and increase S-LOC 23 Cats C/D/E visibility to 1 3/8 SM. VDP NA when using Bend altimeter setting.**

**MISSED APPROACH:** Climb to 3700 then climbing right turn to 7000 on heading 320° and DSD VORTAC R-348 to CUPRI/DSD 22 DME and hold.

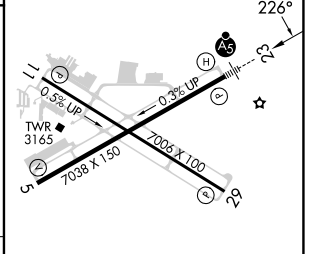
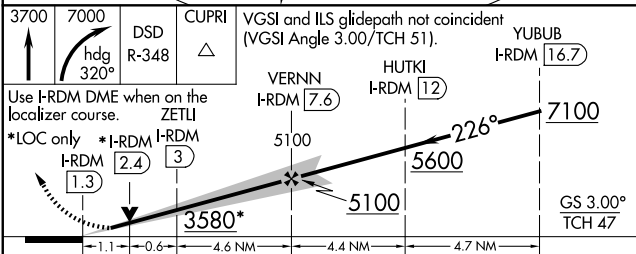
MALS R



ATIS <b>119.025</b>	SEATTLE CENTER <b>126.15 269.475</b>	REDMOND TOWER* <b>124.5 (CTAF) 1256.8</b>	GND CON <b>121.8</b>	UNICOM <b>122.95</b>
------------------------	---	--	-------------------------	-------------------------



ELEV 3082	TDZE 3067
-----------	-----------



CATEGORY	A	B	C	D	E
S-ILS 23	3267-1/2 200 (200-1/2)				
S-LOC 23	3440-1/2	373 (400-1/2)	3440-5/8 373 (400-5/8)		
CIRCLING	3540-1 458 (500-1)	3560-1 478 (500-1)	3640-1 1/2 558 (600-1 1/2)	3740-2 658 (700-2)	3820-2 1/2 738 (800-2 1/2)

REIL Rwy 5, 11, and 29

HIRL Rwy 5-23

MIRL Rwy 11-29

NW-1, 20 MAR 2025 to 17 APR 2025

NW-1, 20 MAR 2025 to 17 APR 2025