

# LEWIS THREE DEPARTURE (GRAY3 • GRAY)

FORT LEWIS, WASHINGTON

ATIS 124.65 306.2  
 CLNC DEL  
 121.9 290.2  
 GND CON  
 121.9 290.2  
 GRAY TOWER ★  
 119.325 (CTAF) 256.8  
 SEATTLE DEP CON  
 120.1 290.9

Rwy	Knots	60	120	180	240	300	360
* 33 (a)	V/V(fpm)	469	938	1407	1876	2345	2814
† 15 (b)	V/V(fpm)	400	800	1200	1600	2000	2400

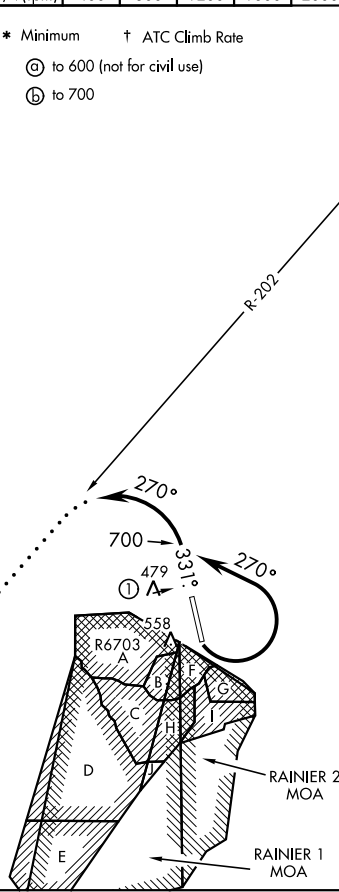
AL-413 [USA]

\* Minimum † ATC Climb Rate

- (a) to 600 (not for civil use)
- (b) to 700

SEATTLE  
 116.8 SEA  
 Chan 115

OLYMPIA  
 113.4 OLM  
 Chan 81  
 L-1, H-1



**RADAR REQUIRED**

① 3003' from Rwy 33

## DEPARTURE ROUTE DESCRIPTION

TAKE-OFF RWY 15: Turn left as soon as practical (departing 700), thence . . .

TAKE-OFF RWY 33: Climb heading 331° to 700, thence . . .

Turn left (unless otherwise directed by ATC) heading 270° for RADAR vectors to assigned route. Maintain altitude as assigned by ATC. Expect filed altitude within 5 min after departure.

LOST COMMUNICATIONS: If no transmissions are received within three minutes after departure, continue climb to assigned altitude, intercept and proceed via SEA VORTAC R-202 to the OLM VORTAC, then via assigned route.

NW-1, 20 MAR 2025 to 17 APR 2025

NW-1, 20 MAR 2025 to 17 APR 2025