

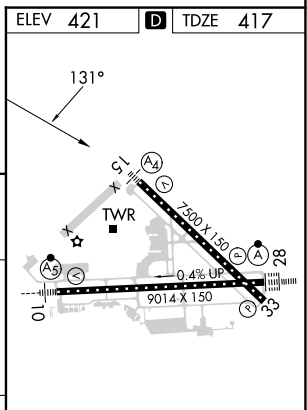
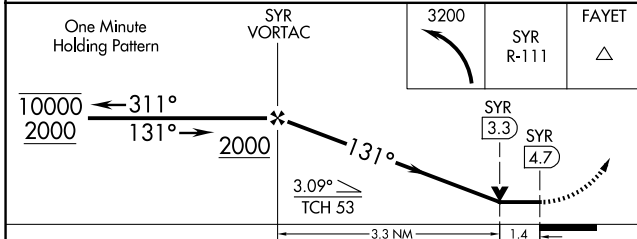
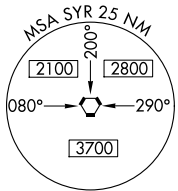
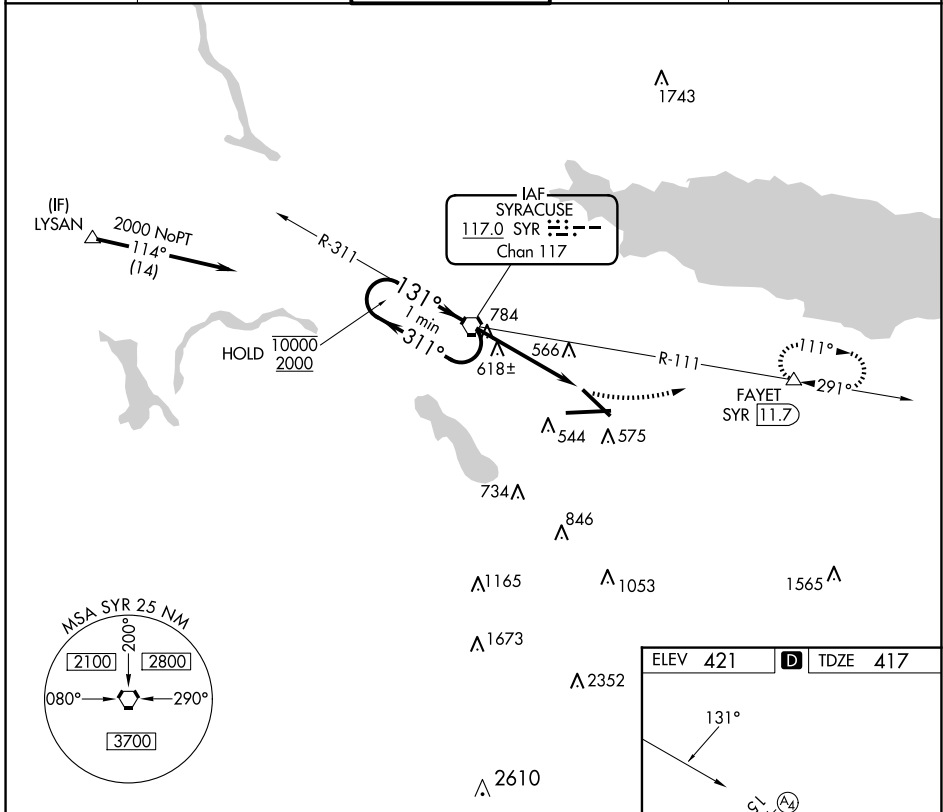
VORTAC SYR <b>117.0</b> Chan <b>117</b>	APP CRS <b>131°</b>	Rwy Idg TDZE Apt Elev	<b>7500</b> <b>417</b> <b>421</b>
---	------------------------	-----------------------------	---

# VOR RWY 15

SYRACUSE HANCOCK INTL (SYR)

DME required.	MALS	MISSED APPROACH: Climbing left turn to 3200 on SYR VORTAC R-111 to FAYET/11.7 DME and hold, continue climb-in-hold to 3200.
<p>▼ Rwy 15 helicopter visibility reduction below 3/4 SM NA.</p> <p>▲ For inop ALS, increase Cat C/D visibility to 1 1/2 SM.</p>		

ATIS <b>124.225</b>	SYRACUSE APP CON <b>126.125 269.125</b>	SYRACUSE TOWER <b>120.3 239.0</b>	GND CON <b>121.7 348.6</b>	CLNC DEL <b>125.05 257.775</b>
------------------------	--	--------------------------------------	-------------------------------	-----------------------------------



CATEGORY	A	B	C	D
S-15	920-3/4 503 (500-3/4)		920-1 1/4 503 (500-1 1/4)	
CIRCLING	920-1 499 (500-1)		1020-1 1/2 599 (600-1 1/2)	1180-2 1/2 759 (800-2 1/2)

TDZ/CL Rwy 28	ELEV 421	TDZE 417			
HIRL Rwy 10-28 and 15-33					
FAF to MAP 4.7 NM					
Knots	60	90	120	150	180
Min:Sec	4:42	3:08	2:21	1:53	1:34

NE-2, 20 MAR 2025 to 17 APR 2025

NE-2, 20 MAR 2025 to 17 APR 2025