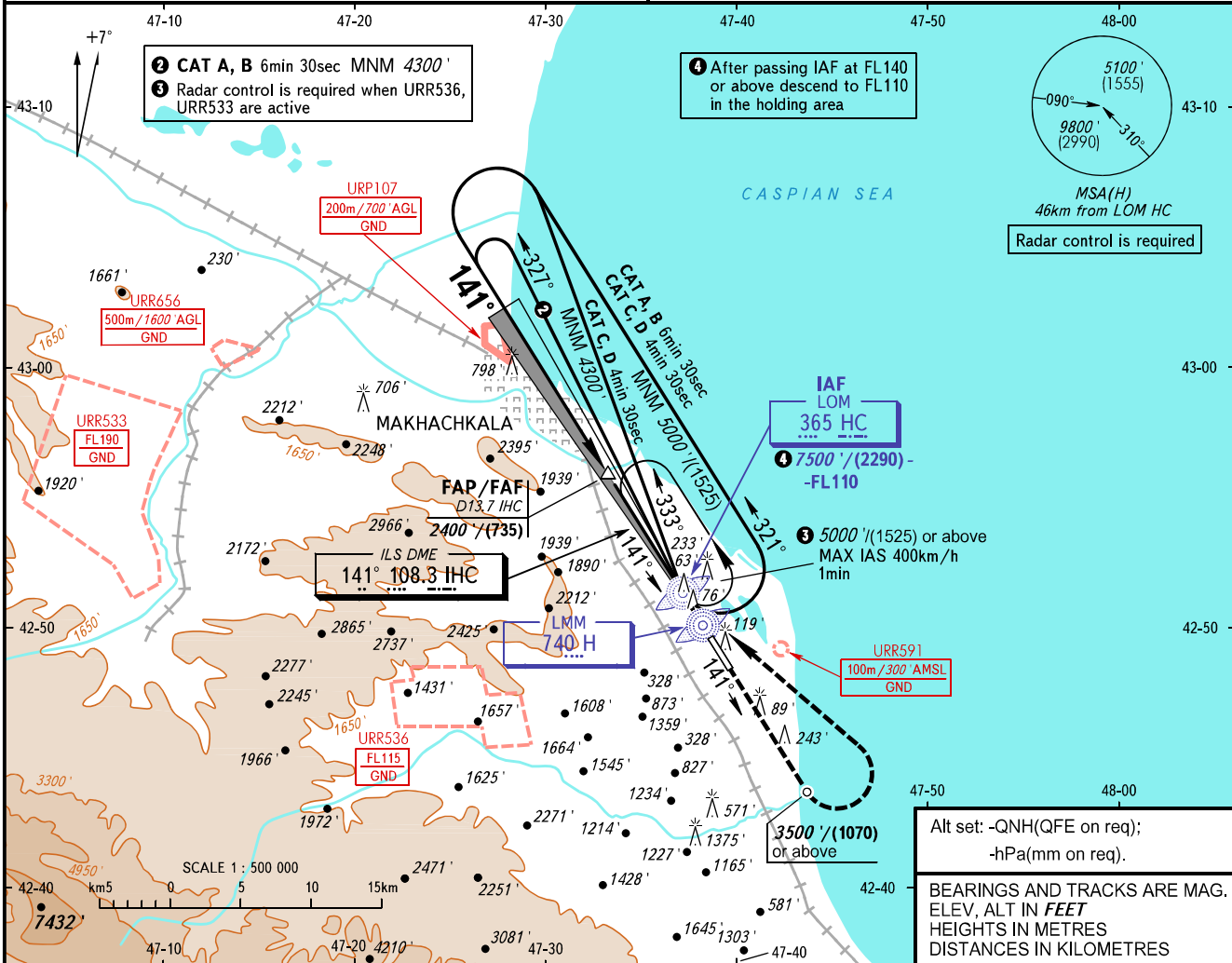


**INSTRUMENT
APPROACH
CHART - ICAO**

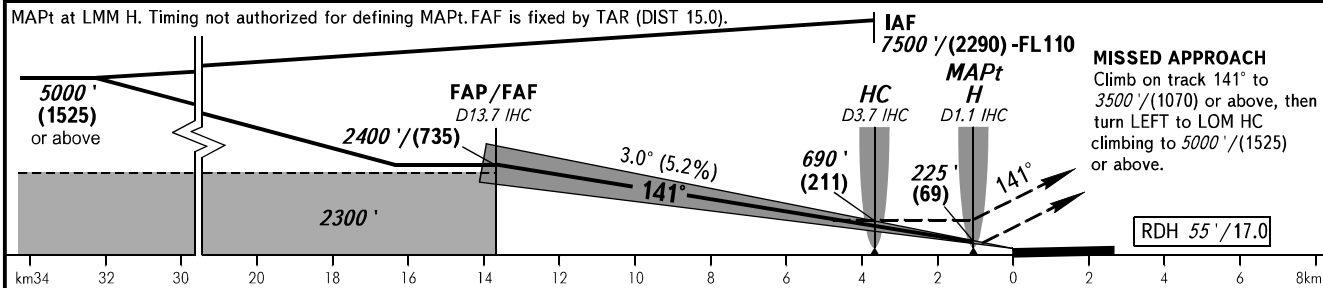
RADAR
START 121.300
121.300

MAKHACHKALA, RUSSIA
UYTASH
ILS W CAT I, LOC W RWY 14

TRANSITION LEVEL: **1**
TRANSITION ALTITUDE: 10000'
AD ELEV: 16' / 5m
THR ELEV: 0' / 0.0m



DME IHC	12.0	10.0	8.0	6.0	4.0	2.0
ALTITUDE/HEIGHT	2118' / (646)	1774' / (541)	1431' / (437)	1087' / (332)	743' / (227)	399' / (122)



OCA(H)		A	B	C	D
Straight-in Approach	CAT I	182' (182')	192' (191')	201' (201')	211' (211')
	LOC	740' (740')	740' (740')	740' (740')	740' (740')
Circling		790' (770')	830' (810')	1720' (1700')	1870' (1860')

1 TRANSITION LEVEL:
- FL110 when QNH is 1013 hPa (760mm mercury column) or above;
- FL120 when QNH is 977 hPa (733mm mercury column) or above, but less than 1013 hPa (760mm mercury column);
- FL130 when QNH is less than 977 hPa (733mm mercury column).

WARNING:
1. Visual manoeuvring west of the aerodrome is PROHIBITED.
2. Turn before passing MAPt is PROHIBITED.
3. DME IHC reads zero at RWY 14 THR.

GROUND SPEED	km/h	150	180	210	240	270	300	330	360	390	420	450
	m/s	2.2	2.6	3.0	3.5	3.9	4.3	4.8	5.2	5.6	6.1	6.5
RATE OF DESCENT	ft/min	427	512	597	682	768	853	938	1024	1109	1194	1280

CHANGE: New chart