

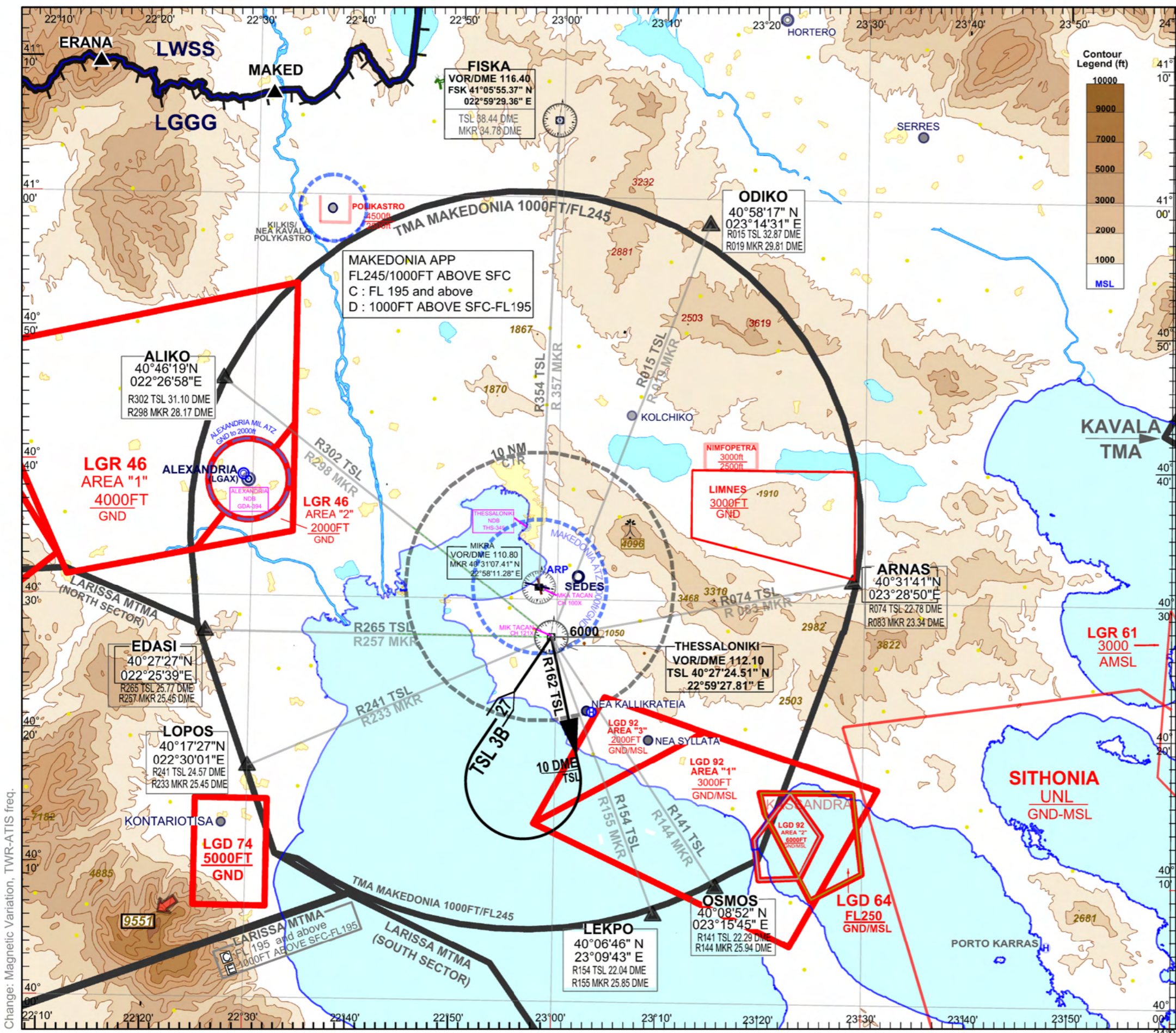
STANDARD DEPARTURE CHART INSTRUMENT (SID) - ICAO

TRANSITION ALT 6000 FT

AERODROME ELEV 22 ft

ATIS 127.555 MAKEDONIA TWR 118.105 APP 120.800

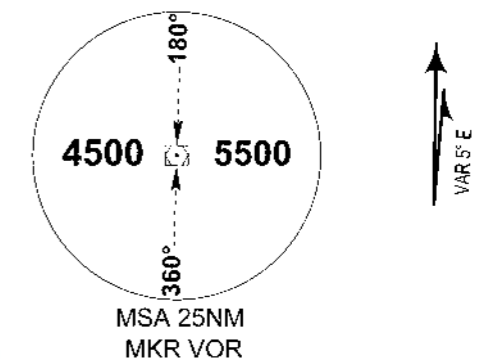
THESSALONIKI / MAKEDONIA RWY 16 (BASED ON TSL VOR/DME) TSL 3B



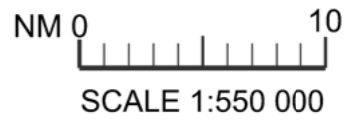
- GENERAL**
1. Speed restriction 250kt MAX IAS during the turns
 2. Minimum bank angle 15°
 3. For the following SIDs a minimum PDG (Procedure Design Gradient) of 6.0% (365ft/nm) is required up to 1200ft, then continue with a minimum PDG (Procedure Design Gradient) of 5.0%(304 ft/nm) up to the MEA (Minimum En-route Altitude).
 4. When, for the following SID, an altitude higher than the TRANSITION ALTITUDE is designated, then an equivalent FLIGHT LEVEL shall be specified by ATC UNIT.
 5. Initial Clearance Limit FL080

THESSALONIKI THREE BRAVO DEPARTURE (TSL 3B).

"Climb straight ahead to TSL VOR, intercept R 162 TSL. At R 162 TSL/10 DME Fix turn right to TSL VOR 6000ft or above and then to the assigned route by ATC unit."



ELEVATIONS, ALTITUDES ARE IN FEET
 BEARINGS, TRACKS AND RADIALS ARE MAGNETIC
 DISTANCES ARE IN NM
 VAR 5°E/2022 - Annual Change 5'44"



Change: Magnetic Variation, TWR-ATIS freq.