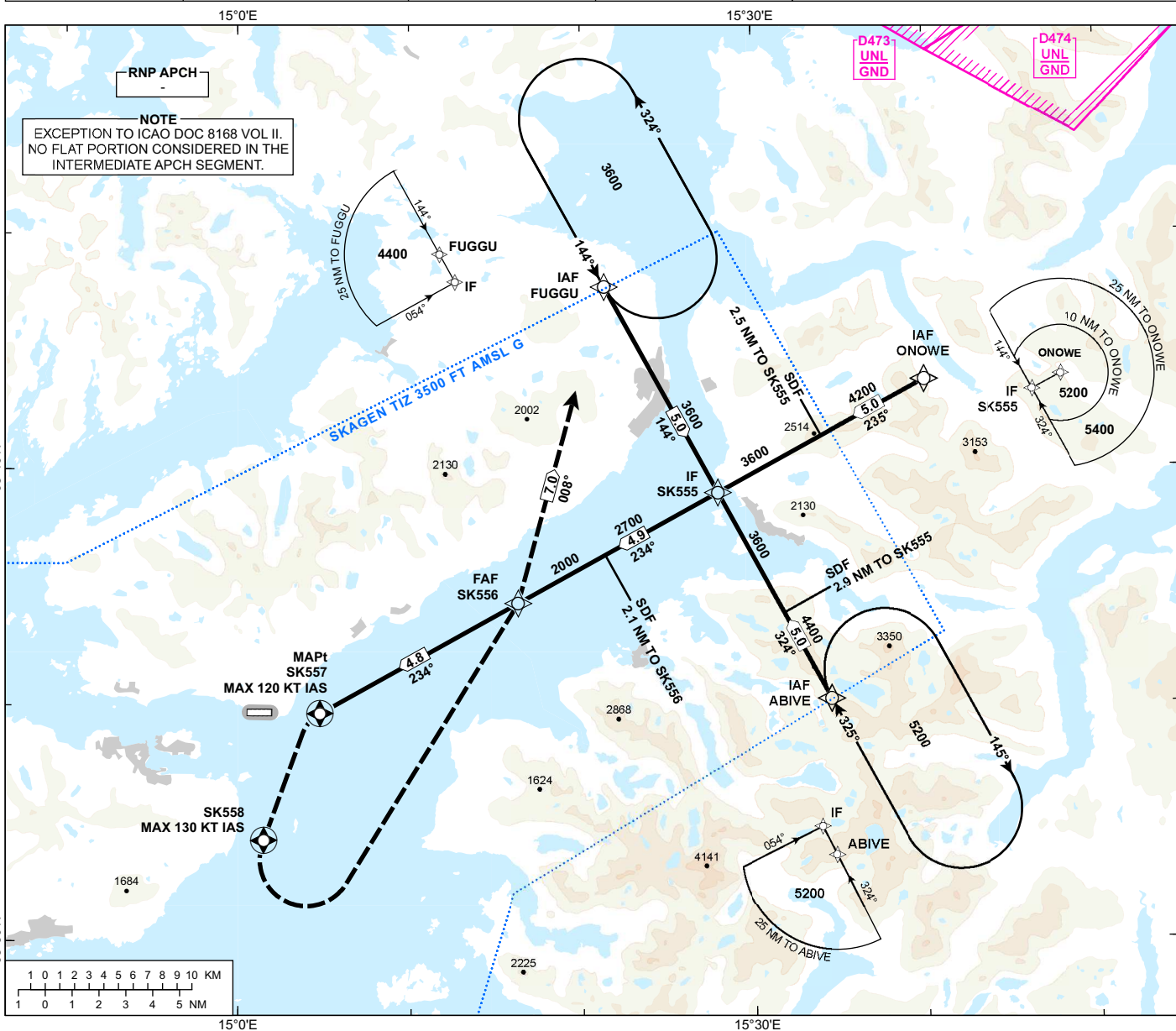


INSTRUMENT APPROACH CHART - ICAO

**STOKMARKNES
SKAGEN
RNP Z RWY 26**

APP: 126.450	AD ELEV: 14
AFIS: 120.450	THR ELEV: 13
VDF AVBL.	HGT RELATED TO THR 26
	CIRCLING HGT RELATED TO AD ELEV
	DIST IN NM. ELEV, ALT AND HGT IN FT
SCALE 1:250 000	VAR 7° E (2020)

TRANSITION ALTITUDE
7000



DIST TO SK557	9	8	7	6	5	4	3	2
ALT (HGT)	-	-	-	-	-	1730 (1717)	1400 (1387)	1070 (1057)

PROCEDURE OFFSET: 30°

MISSED APPROACH:

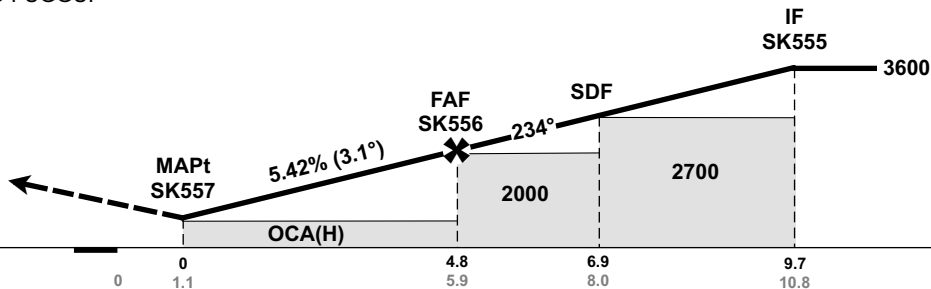
TURN LEFT DCT SK558, LEFT DCT SK556, TO FUGGU.
ENTER FUGGU HLDG CLIMBING TO 3600.

NOTE:

MAX 120 KT IAS IN MISSED APCH TURN AT SK557.
MAX 130 KT IAS IN MISSED APCH TURN AT SK558.

DESCENT GRADIENT CALCULATED
FMSK556 TO SK557 FOR OCA 410.

NO TURN BEFORE MAPt.



SK557 →	0	0	4.8	6.9	9.7
THR →	0	1.1	5.9	8.0	10.8
CAT OF ACFT		A	B		
OCA (H)	STRAIGHT- IN	LNAV 2.5%*	820 (807)	750 (737)	
		LNAV 3.5%*	410 (397)	440 (427)	
CIRCLING			820 (807)	1120 (1106)	

NOTE: CIRCLING S OF AD ONLY. *MNM MISSED APCH CLIMB GRADIENT.

CHANGES: COMPLETE REVISION, PROCEDURE NAME.

ATS AIRSPACE CLASSIFICATION: REF ENR 1.4