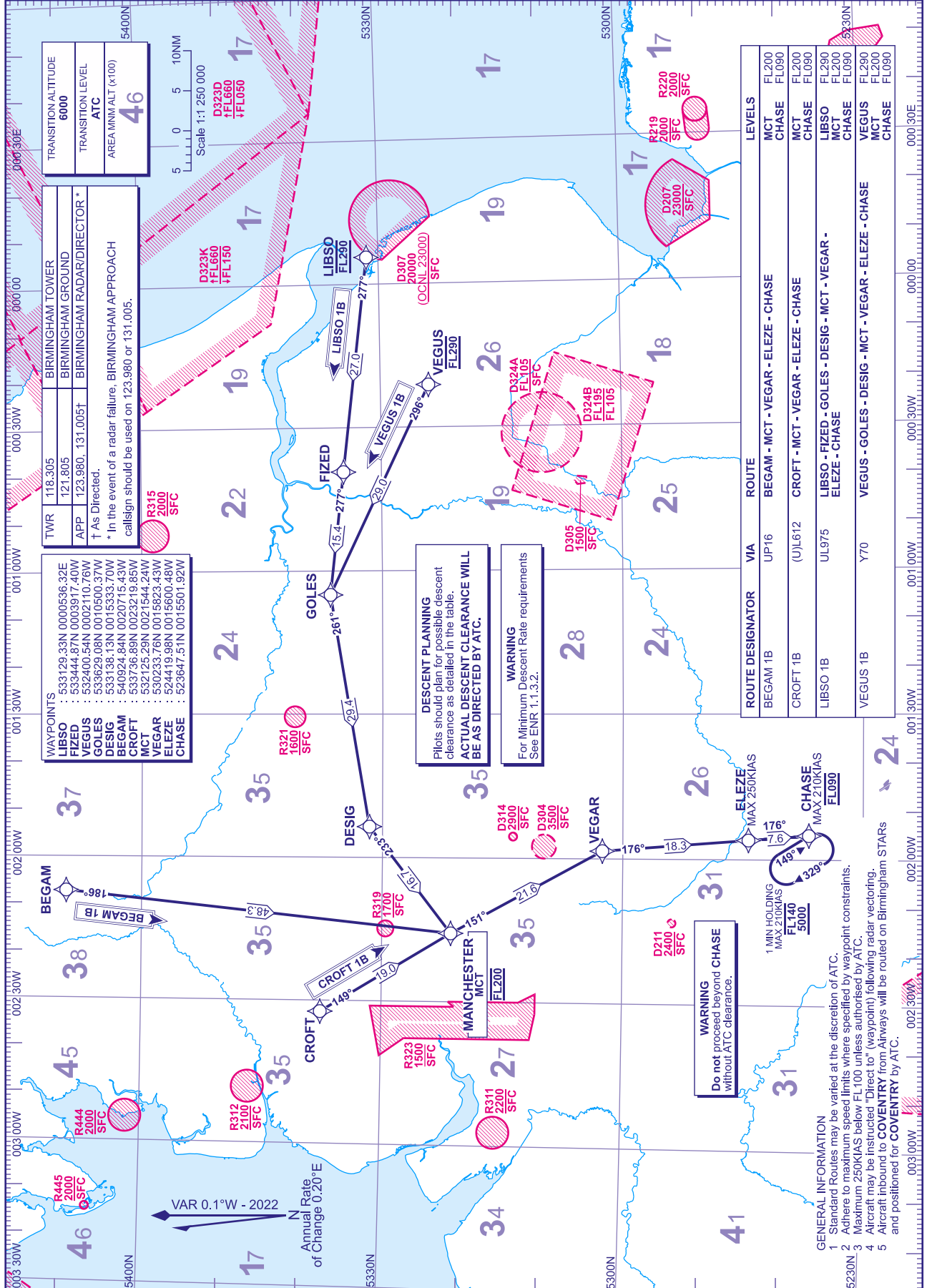


**RNAV1 (DME/DME or GNSS)
STANDARD ARRIVAL CHART -
INSTRUMENT (STAR) - ICAO**

DISTANCES IN NAUTICAL MILES
TRACKS ARE MAGNETIC
ALTITUDES AND ELEVATIONS ARE IN FEET

**BIRMINGHAM
BEGAM 1B CROFT 1B
LIBSO 1B VEGUS 1B**



TRANSITION ALTITUDE	6000
TRANSITION LEVEL	ATC
AREA MNA ALT (x100)	46

TWR	118.305	BIRMINGHAM TOWER
BIRMINGHAM GROUND	121.805	
BIRMINGHAM RADAR/DIRECTOR	APP 123.980, 131.005†	
As Directed.		
* In the event of a radar failure, BIRMINGHAM APPROACH call sign should be used on 123.980 or 131.005.		

WAYPOINTS	533129.33N 0000536.32E
LIBSO	533444.87N 0003917.40W
FIZED	532400.54N 0002110.76W
VEGUS	533629.08N 0010500.37W
GOLES	533138.13N 0015333.70W
DESIG	540924.84N 0020715.43W
BEGAM	533736.89N 0023219.85W
CROFT	532125.29N 0021544.24W
MCT	530233.76N 0015823.43W
VEGAR	524419.98N 0015600.48W
ELEZE	523647.51N 0015501.92W
CHASE	

DESCENT PLANNING
Pilots should plan for possible descent clearance as detailed in the table.
ACTUAL DESCENT CLEARANCE WILL BE AS DIRECTED BY ATC.

WARNING
For Minimum Descent Rate requirements See ENR 1.1.3.2.

WARNING
Do not proceed beyond CHASE without ATC clearance.

ROUTE DESIGNATOR	VIA	ROUTE	LEVELS
BEGAM 1B	UP16	BEGAM - MCT - VEGAR - ELEZE - CHASE	MCT FL200 CHASE FL090
CROFT 1B	(U)J612	CROFT - MCT - VEGAR - ELEZE - CHASE	MCT FL200 CHASE FL090
LIBSO 1B	UL975	LIBSO - FIZED - GOLES - DESIG - MCT - VEGAR - ELEZE - CHASE	LIBSO FL290 MCT FL200 CHASE FL090
VEGUS 1B	Y70	VEGUS - GOLES - DESIG - MCT - VEGAR - ELEZE - CHASE	VEGUS FL290 MCT FL200 CHASE FL090

- GENERAL INFORMATION**
- Standard Routes may be varied at the discretion of ATC.
 - Adhere to maximum speed limits where specified by waypoint constraints.
 - Maximum 250KIAS below FL100 unless authorised by ATC.
 - Aircraft may be instructed "Direct to" (waypoint) following radar vectoring.
 - Aircraft inbound to COVENTRY from Airways will be routed on Birmingham STARS and positioned for COVENTRY by ATC.

CHANGE (3/25): EGR313 REMOVED.
AERO INFO DATE 03 JAN 25