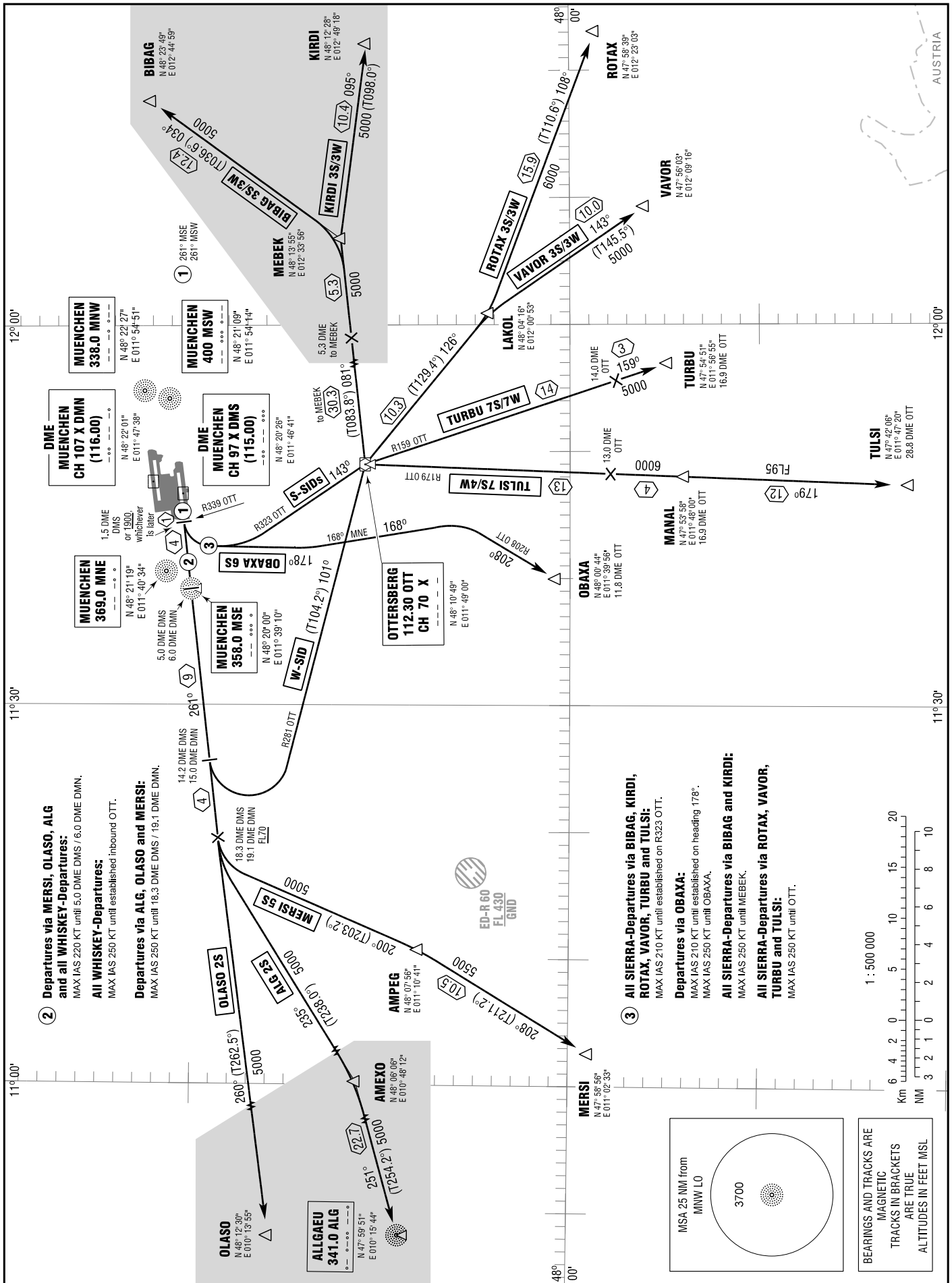


STANDARD DEPARTURE
CHART - INSTRUMENT
(SID)

TRANSITION
ALTITUDE 5000
VAR 3° E

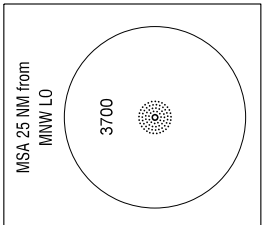
MUENCHEN ATIS	123.130	MUENCHEN APRON	121.930 (E)
MUENCHEN DELIVERY	121.730	MUENCHEN GROUND	121.830 (S)
MUENCHEN APRON	121.710	MUENCHEN TOWER	120.505 (S)
	121.780 (V)	MUENCHEN RADAR	127.955 (S)

MUENCHEN (SOUTH)
RWY 26L



② Departures via MERSI, OLASO, ALG and all WHISKEY-Departures:
MAX IAS 220 KT until 5.0 DME DMS / 6.0 DME DMN.
All WHISKEY-Departures:
MAX IAS 250 KT until established inbound OTT.
Departures via ALG, OLASO and MERSI:
MAX IAS 250 KT until 18.3 DME DMS / 19.1 DME DMN.

③ All SIERRA-Departures via BIBAG, KIRDI, ROTAX, VAVOR, TURBU and TULSI:
MAX IAS 210 KT until established on R323 OTT.
Departures via OBAXA:
MAX IAS 210 KT until established on heading 178°.
MAX IAS 250 KT until OBAXA.
All SIERRA-Departures via BIBAG and KIRDI:
MAX IAS 250 KT until MEBEK.
All SIERRA-Departures via ROTAX, VAVOR, TURBU and TULSI:
MAX IAS 250 KT until OTT.



BEARINGS AND TRACKS ARE
MAGNETIC
TRACKS IN BRACKETS
ARE TRUE
ALTITUDES IN FEET MSL