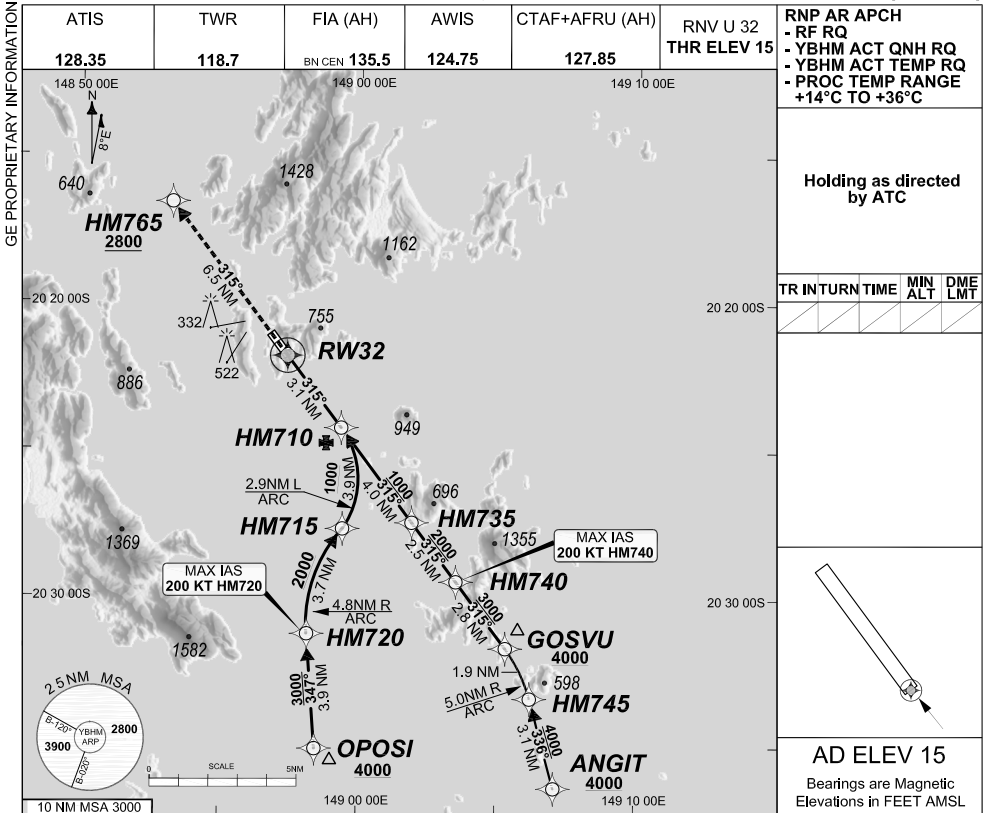


FOR CASA APPROVED OPERATORS ONLY

24 MAR 2022

USE QNH

HAMILTON ISLAND, QLD (YBHM)

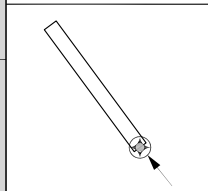


GE PROPRIETARY INFORMATION

ATIS	TWR	FIA (AH)	AWIS	CTAF+AFRU (AH)	RNV U 32 THR ELEV 15	RNP AR APCH - RF RQ - YBHM ACT QNH RQ - YBHM ACT TEMP RQ - PROC TEMP RANGE +14°C TO +36°C
128.35	118.7	BN CEN 135.5	124.75	127.85		

TR	INTURN	TIME	MIN ALT	DME LMT

ALT (2.90° APCH PATH)	RW32	HM710	HM715	HM735	HM740	HM720
	63	1000	2180	2230	3000	3300



AD ELEV 15
Bearings are Magnetic Elevations in FEET AMSL

MISSED APPROACH: Climb to 2800FT or as directed by ATC via the RNP AR Missed Approach track to HM765. Acceleration altitude see Go-Around Safety Assessment.	HM765	RW32	MAPt	FAF HM710	HM715 (7.0 NM) HM735 (7.1 NM)	HM720 (10.7 NM) HM740 (9.6 NM)	OPOSI (14.6 NM) GOSVU (12.4 NM)	4000
ENGINE OUT MISSED APPROACH: SEE PAGE 2								
	THR 32 ELEV 15							TCH 48FT
	NM FM THR	6.5	0	3.1				

NOTES

1. PROC AVBL up to MLW.
2. Lateral transition to MAP must not be initiated prior to DA/H PSN.
3. APCH Path does not coincide with PAPI glide path 3°.
4. Transient yacht masts may infringe RWY 32 visual approach slope clearance.
5. See Engineering Report for Minimum MAP gradient (AE) to 2800 FT.

CATEGORY	A	B	C	D
RNP (0.30)	NOT APPLICABLE		DA(H) 628' (613')-3.4	
RNP ()	NOT APPLICABLE		DA(H) () - .	
RNP ()	NOT APPLICABLE		DA(H) () - .	
RNP ()	NOT APPLICABLE		DA(H) () - .	
CIRCLING			NOT AUTHORISED	

Revision: From SUP H97/21, chart title

BHMG07-170

DO NOT USE FOR NAVIGATION

Prepared by GE Aviation

