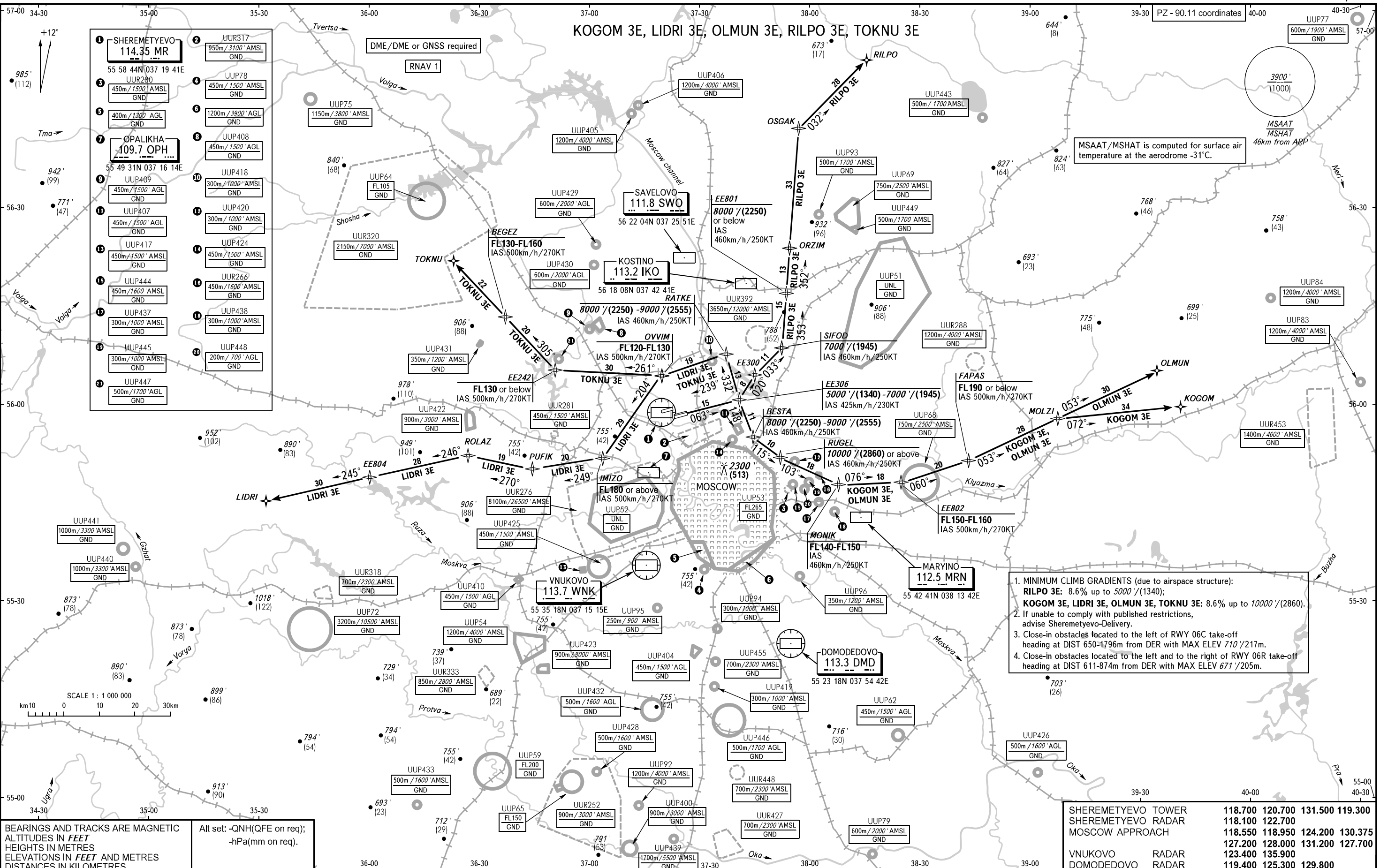


STANDARD DEPARTURE CHART
INSTRUMENT (SID) - ICAO

TRANSITION ALT: **10000'**
TRANSITION HGT: **(2860)**

MOSCOW, RUSSIA
SHEREMETYEVO
RNAV RWY 06C, 06R



1. MINIMUM CLIMB GRADIENTS (due to airspace structure):
RILPO 3E: 8.6% up to 5000'/(1340);
KOGOM 3E, LIDRI 3E, OLMUN 3E, TOKNU 3E: 8.6% up to 10000'/(2860).
2. If unable to comply with published restrictions, advise Sheremetyevo-Delivery.
3. Close-in obstacles located to the left of RWY 06C take-off heading at DIST 650-1796m from DER with MAX ELEV 710' /217m.
4. Close-in obstacles located to the left and to the right of RWY 06R take-off heading at DIST 611-874m from DER with MAX ELEV 671' /205m.

BEARINGS AND TRACKS ARE MAGNETIC
 ALTITUDES IN FEET
 HEIGHTS IN METRES
 ELEVATIONS IN FEET AND METRES
 DISTANCES IN KILOMETRES

Alt set: -QNH(QFE on req);
 -hPa(mm on req).

SHEREMETYEVO TOWER	118.700	120.700	131.500	119.300
SHEREMETYEVO RADAR	118.100	122.700		
MOSCOW APPROACH	118.550	118.950	124.200	130.375
VNUKOVO RADAR	127.200	128.000	131.200	127.700
DOMODEDOVO RADAR	123.400	135.900		
	119.400	125.300	129.800	