

WAAS CH 99316 W08A	APP CRS 077°	Rwy Idg TDZE Apt Elev	5205 2585 2591
--	------------------------	-----------------------------	---

RNAV (GPS) RWY 8

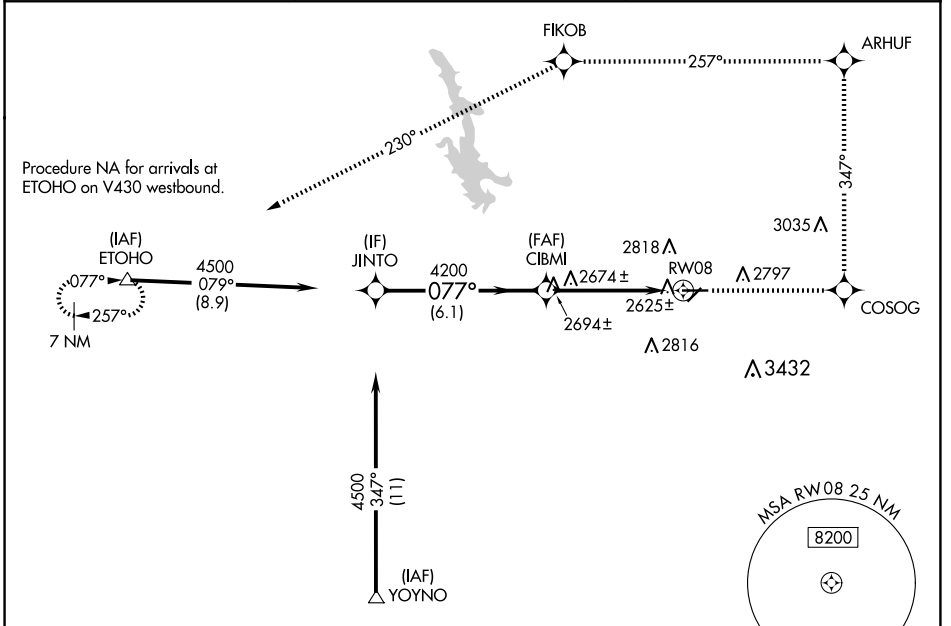
HAVRE CITY-COUNTY (HVR)

RNP APCH-GPS.

⚠ For uncompensated Baro-VNAV systems,
⚠ LNAV/VNAV NA below -20°C or above 54°C.

MISSED APPROACH: Climb to 8000 direct COSOG and left on track 347° to ARHUF and left turn on track 257° to FIKOB and on track 230° to ETOHO and hold.

ASOS 135.225	SALT LAKE CENTER 133.4 285.4	UNICOM 122.8 (CTAF)
------------------------	--	-------------------------------

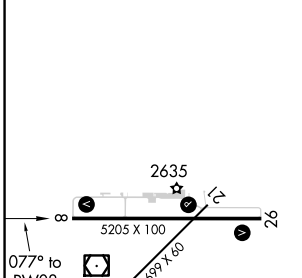


NW-1, 20 MAR 2025 to 17 APR 2025

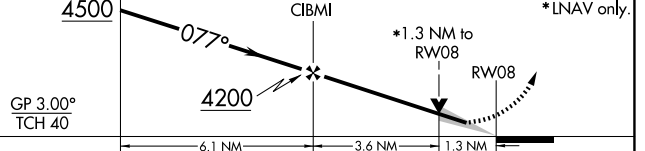
NW-1, 20 MAR 2025 to 17 APR 2025

ELEV 2591	D	TDZE 2585
-----------	----------	-----------

Procedure NA for arrivals at YOYNO on V257-611 southwest bound.



Procedure Turn NA	8000	COSOG	ARHUF	FIKOB	ETOHO
	↑	⬅ tr 347°	⬅ tr 257°	⬅ tr 230°	△



CATEGORY	A	B	C	D
LPV DA	2835-1 250 (300-1)			
LNAV/VNAV DA	2906-1¼ 321 (400-1¼)			
LNAV MDA	3020-1	435 (500-1)	3020-1¼ 435 (500-1¼)	3020-1½ 435 (500-1½)
CIRCLING	3080-1 489 (500-1)	3120-1 529 (600-1)	3360-2¼ 769 (800-2¼)	3740-3 1149 (1200-3)

REIL Rwy 8 and 26
MIRL Rwy 8-26
MIRL Rwy 3-21