

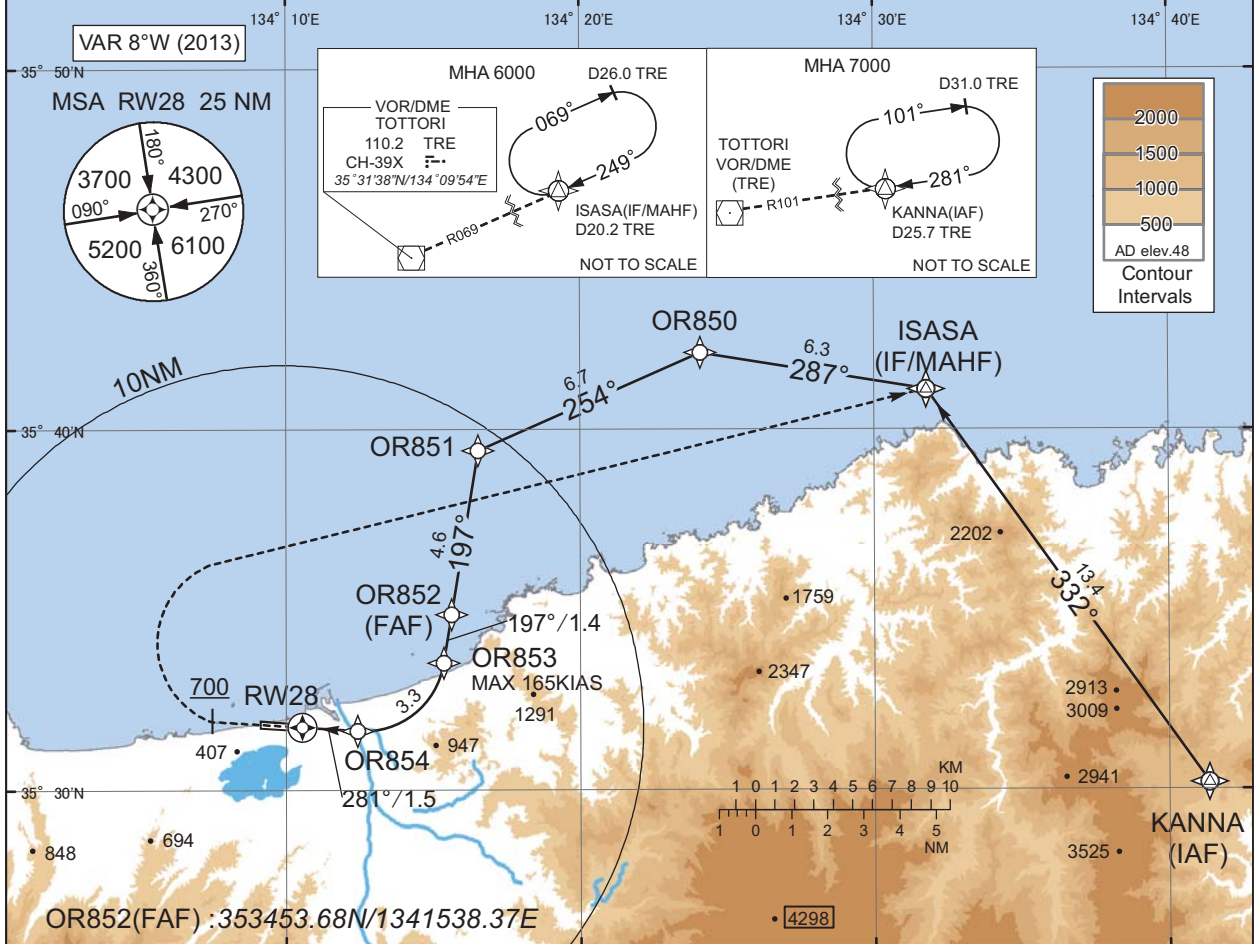
INSTRUMENT APPROACH CHART

RJOR / TOTTORI

RNP RWY28(AR)

KOBE CONTROL 133.8 - 126.1 287.6 - 278.2	RNP AR RF required.	TOTTORI RADIO 118.15 AFIS provided by Osaka Airport Office	NO RADAR
--	------------------------	---	----------

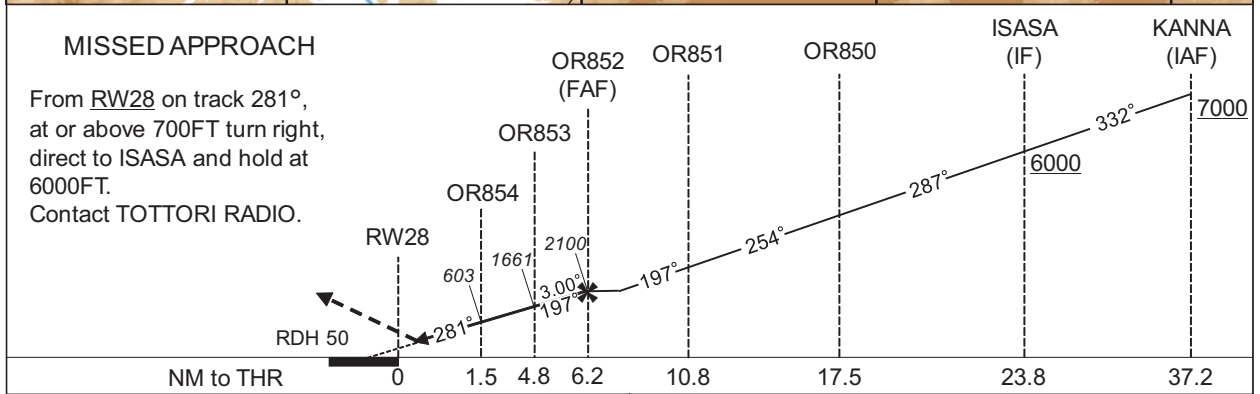
For uncompensated Baro-VNAV systems, procedure not authorized below -5°C / above 45°C



MISSED APPROACH

From RW28 on track 281°, at or above 700FT turn right, direct to ISASA and hold at 6000FT. Contact TOTTORI RADIO.

CHANGE : FREQ for KOBE CONTROL.



MINIMA	THR elev. 65	AD elev. 48
CAT	RNP 0.30	
	DA(H)	CMV
A	-	-
B	-	-
C	365(300)	1600
D	-	1800

Authorization Required

Missed APCH climb gradient MNM 3.4%

INSTRUMENT APPROACH CHART

RJOR / TOTTORI

RNP RWY28(AR)

Coding Table

Serial Number	Path Descriptor	Waypoint Identifier	Fly Over	Course °M(°T)	Magnetic Variation	Distance (NM)	Turn Direction	Altitude (FT)	Speed (KIAS)	VPA/RDH (°/FT)	RNP Value
001	IF	KANNA	-	-	-7.6	-	-	+7000	-	-	-
002	TF	ISASA	-	332 (324.6)	-7.6	13.4	-	+6000	-	-	1.0
003	TF	OR850	-	287 (279.4)	-7.6	6.3	-	-	-	-	1.0
004	TF	OR851	-	254 (246.2)	-7.6	6.7	-	-	-	-	1.0
005	TF	OR852	-	197 (189.2)	-7.6	4.6	-	2100	-	-	1.0
006	TF	OR853	-	197 (189.2)	-7.6	1.4	-	1661	-165	-3.00	0.3
007	RF Center: ORRF1 r=2.25NM	OR854	-	-	-7.6	3.3	R	603	-	-3.00	0.3
008	TF	RW28	Y	281 (273.8)	-7.6	1.5	-	115	-	-3.00/50	0.3
009	FA	-	-	281 (273.8)	-7.6	-	-	+700	-	-	1.0
010	DF	ISASA	-	-	-7.6	-	R	6000	-	-	1.0

Waypoint Coordinates

Waypoint Identifier	Coordinates	RF Arc Center Identifier	Coordinates
KANNA	353011.27N / 1344121.95E	ORRF1	353354.77N / 1341238.96E
ISASA	354107.52N / 1343147.31E		
OR850	354209.38N / 1342406.43E		
OR851	353926.62N / 1341632.67E		
OR852	353453.68N / 1341538.37E		
OR853	353333.13N / 1341522.36E		
OR854	353139.90N / 1341226.53E		
RW28	353146.03N / 1341033.79E		

CHANGE : PROC renamed.