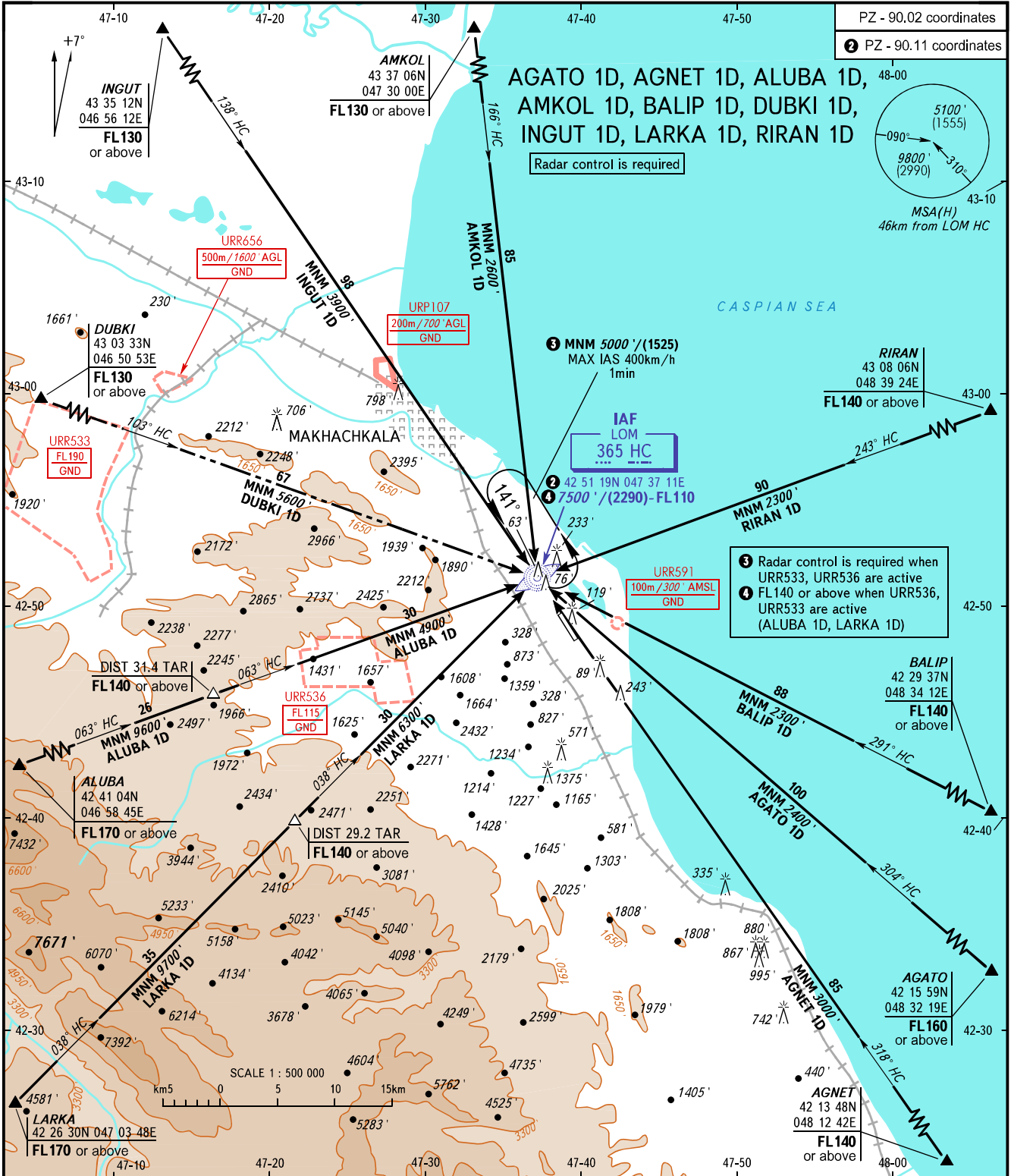


STANDARD ARRIVAL CHART
INSTRUMENT (STAR) - ICAO

MAKHACHKALA, RUSSIA
UYTASH
RWY 14

TRANSITION
LEVEL: 1



APPROACH	119.700
RADAR	121.300
START	121.300

BEARINGS AND TRACKS ARE MAGNETIC	Alt set: -QNH(QFE on req);
ALTITUDES AND ELEVATIONS IN FEET	-hPa(mm on req).
HEIGHTS IN METRES	
DISTANCES IN KILOMETRES	

TRANSITION LEVEL:

- FL110 when QNH is 1013 hPa (760mm mercury column) or above;
- FL120 when QNH is 977 hPa (733mm mercury column) or above, but less than 1013 hPa (760mm mercury column);
- FL130 when QNH is less than 977 hPa (733mm mercury column).

WARNING
DUBKI 1D is not AVBL when URR533 is active.

CHANGE: New chart