

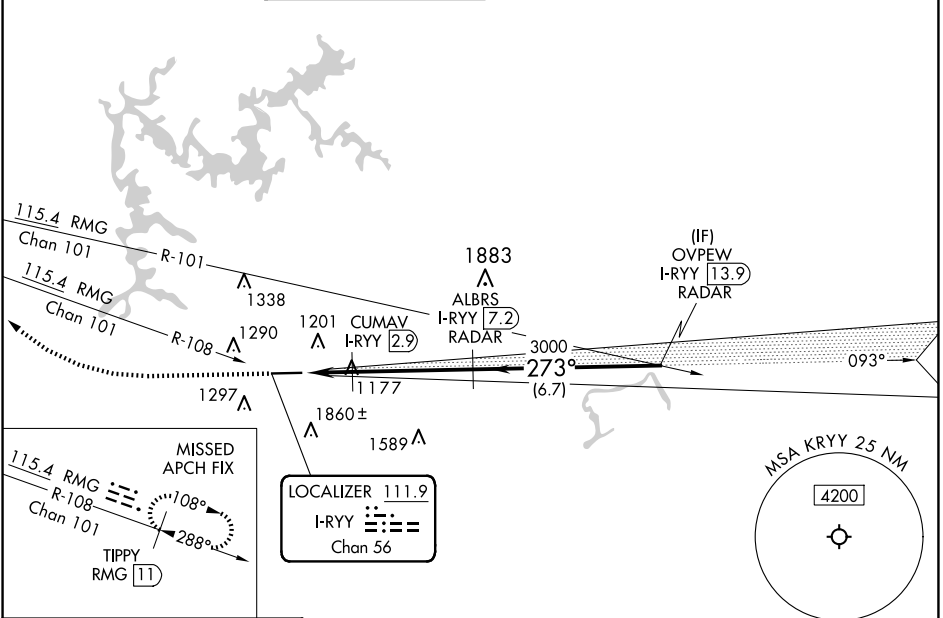
LOC/DME I-RYY 111.9 Chan 56	APP CRS 273°	Rwy Idg 5374 TDZE 1011 Apt Elev 1040
---	------------------------	---

ILS or LOC RWY 27

COBB COUNTY INTL/MCCOLLUM FLD (RYY)

DME required. RADAR required for procedure entry.		MALSIF	MISSED APPROACH: Climb to 1600 then climbing right turn to 3500 on heading 300° and on RMG VORTAC R-108 to TIPPY/RMG 11 DME and hold.
 Inop table does not apply to S-ILS 27.			

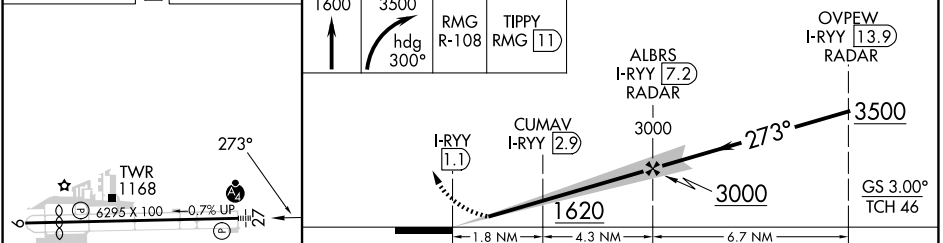
ATIS 128.125	ATLANTA APP CON 121.0 268.7	MCCOLLUM TOWER ★ 125.9 (CTAF) 0	GND CON 119.0	CLNC DEL 119.0	CLNC DEL 121.0 268.7 (When twr closed)	UNICOM 122.7
------------------------	---------------------------------------	---	-------------------------	--------------------------	---	------------------------



SE-4, 20 MAR 2025 to 17 APR 2025

SE-4, 20 MAR 2025 to 17 APR 2025

ELEV 1040	D	TDZE 1011
-----------	----------	-----------



CATEGORY	A	B	C	D
S-ILS 27	1211-3/4 200 (200-3/4)			
S-LOC 27	1620-3/4	609 (600-3/4)	1620-1/2	609 (600-1/2)
C CIRCLING	1800-1	760 (800-1)	2180-3	1140 (1200-3)
CUMAV FIX MINIMUMS				
S-LOC 27	1480-3/4	469 (500-3/4)	1480-1 1/8	469 (500-1 1/8)
C CIRCLING	1800-1	760 (800-1)	2180-3	1140 (1200-3)

HIRL Rwy 9-27 **0**

FAF to MAP 6.1 NM

Knots	60	90	120	150	180
Min:Sec	6:06	4:04	3:03	2:26	2:02