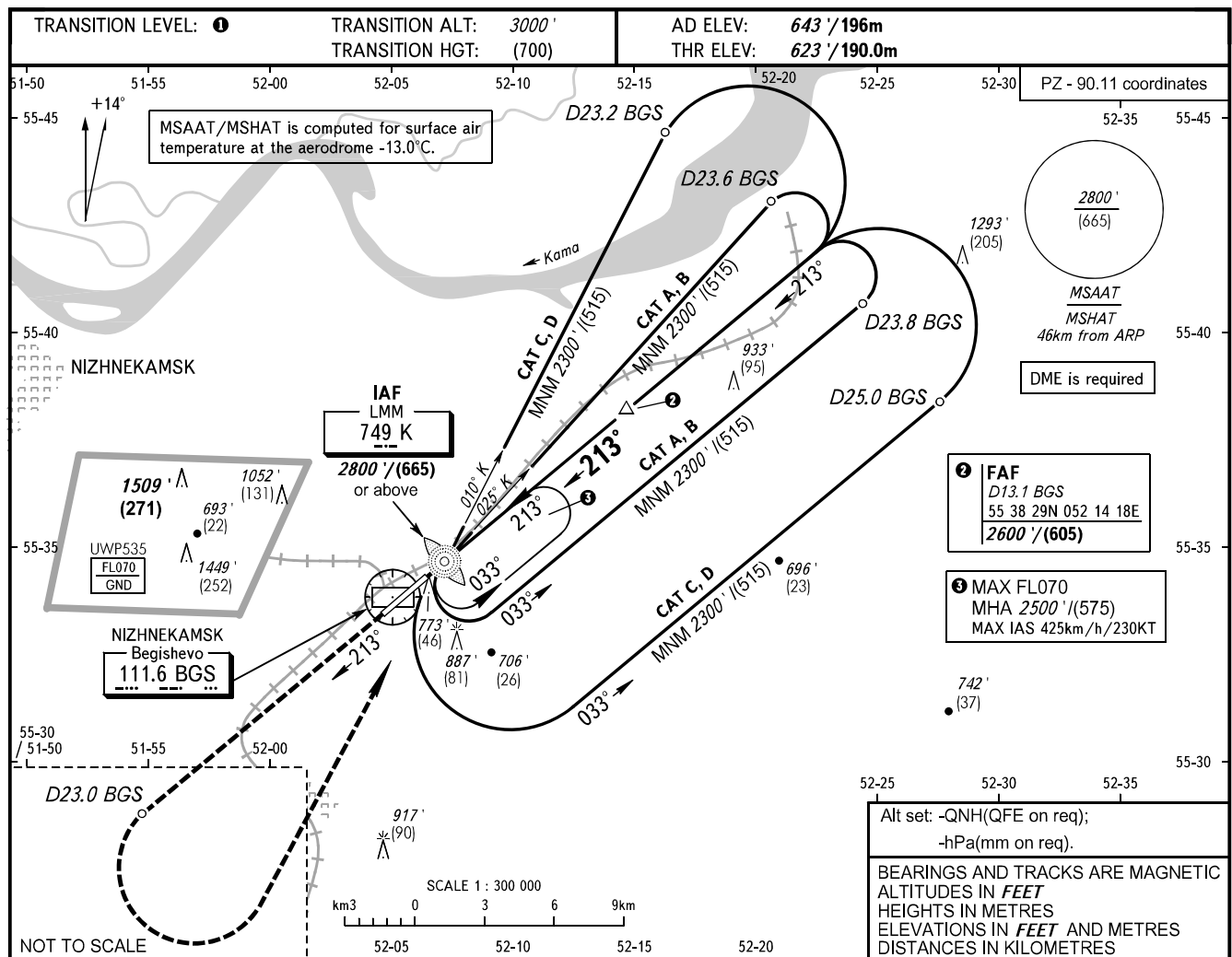


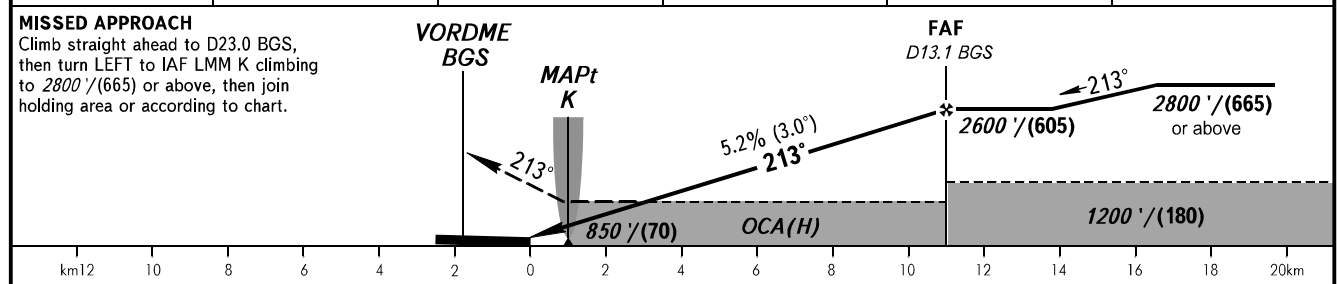
**INSTRUMENT  
APPROACH  
CHART - ICAO**

RADAR 127.900  
TOWER 127.900  
START 121.200

**NIZHNEKAMSK, RUSSIA**  
BEGISHEVO  
NDB Z RWY 21



DIST TO THR RWY 21	2.0	4.0	6.0	8.0	10.0
DME BGS	3.8	5.8	7.8	9.8	11.8
ALTITUDE	1020' / 310	1360' / 415	1700' / 520	2040' / 625	2380' / 725
HEIGHT	(400') / (120)	(740') / (225)	(1080') / (330)	(1420') / (435)	(1760') / (535)



OCA(H)		A	B	C	D	1 TRANSITION LEVEL:														
Straight-in Approach		890' (260')	890' (260')	890' (270')	910' (290')	- FL040 when QNH is 1013 hPa (760mm mercury column) or above;														
		270 (80)	270 (80)	280 (85)	280 (90)	- FL050 when QNH is 977 hPa (733mm mercury column) or above, but less than 1013 hPa (760mm mercury column);														
Circling		1070' (430')	1190' (540')	1290' (640')	1340' (690')	- FL060 when QNH is less than 977 hPa (733mm mercury column).														
		330 (130)	365 (165)	395 (195)	410 (210)	MAPt at LMM K. Timing not authorized for defining MAPt. Visual manoeuvring in sector 228° - 018° is PROHIBITED.														
GROUND SPEED	km/h	150	180	210	240	270	300	330	360	390	420	450								
	kt	81	97	113	130	146	162	178	194	211	227	243								
RATE OF DESCENT	m/s	2.2	2.6	3.0	3.5	3.9	4.3	4.8	5.2	5.6	6.1	6.5								
	ft/min	427	512	597	682	768	853	938	1024	1109	1194	1280								

CHANGE: New chart