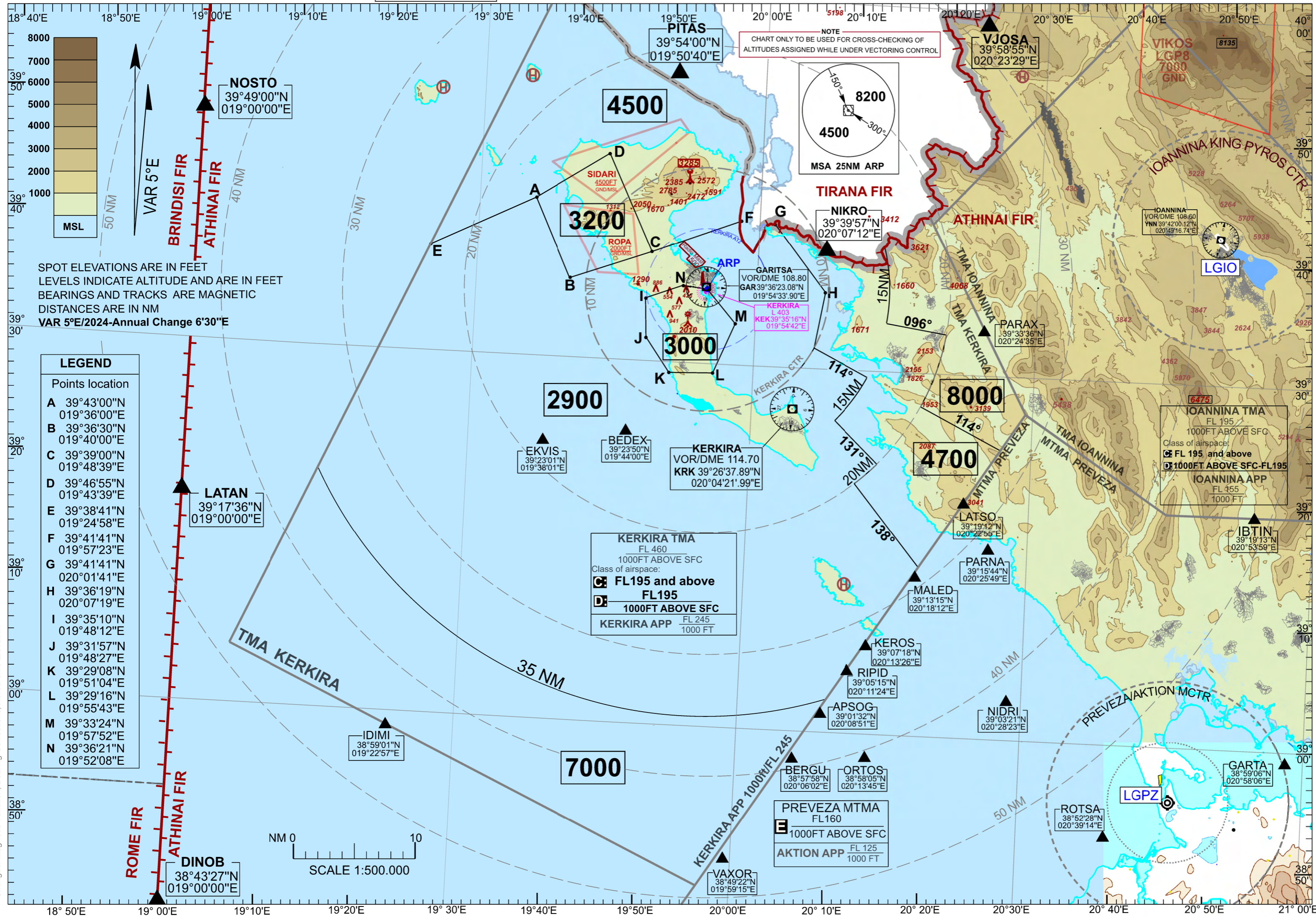


AIP GREECE
ATC SURVEILLANCE MINIMUM
ALTITUDE CHART (ASMAC) - ICAO

AERODROME ELEV 5 FT TRANSITION ALTITUDE 5000 FT TWR 120.855
APP 122.355 ATIS 126.355

TAR System Coverage Chart within KERKIRA TMA with Minimum Radar Safety Altitudes

KERKIRA TMA



SPOT ELEVATIONS ARE IN FEET
 LEVELS INDICATE ALTITUDE AND ARE IN FEET
 BEARINGS AND TRACKS ARE MAGNETIC
 DISTANCES ARE IN NM
VAR 5°E/2024-Annual Change 6'30"E

LEGEND	
Points location	
A	39°43'00"N 019°36'00"E
B	39°36'30"N 019°40'00"E
C	39°39'00"N 019°48'39"E
D	39°46'55"N 019°43'39"E
E	39°38'41"N 019°24'58"E
F	39°41'41"N 019°57'23"E
G	39°41'41"N 020°01'41"E
H	39°36'19"N 020°07'19"E
I	39°35'10"N 019°48'12"E
J	39°31'57"N 019°48'27"E
K	39°29'08"N 019°51'04"E
L	39°29'16"N 019°55'43"E
M	39°33'24"N 019°57'52"E
N	39°36'21"N 019°52'08"E

Changes: Magnetic Variation, Bearing Corrections, Aerodrome Elevation