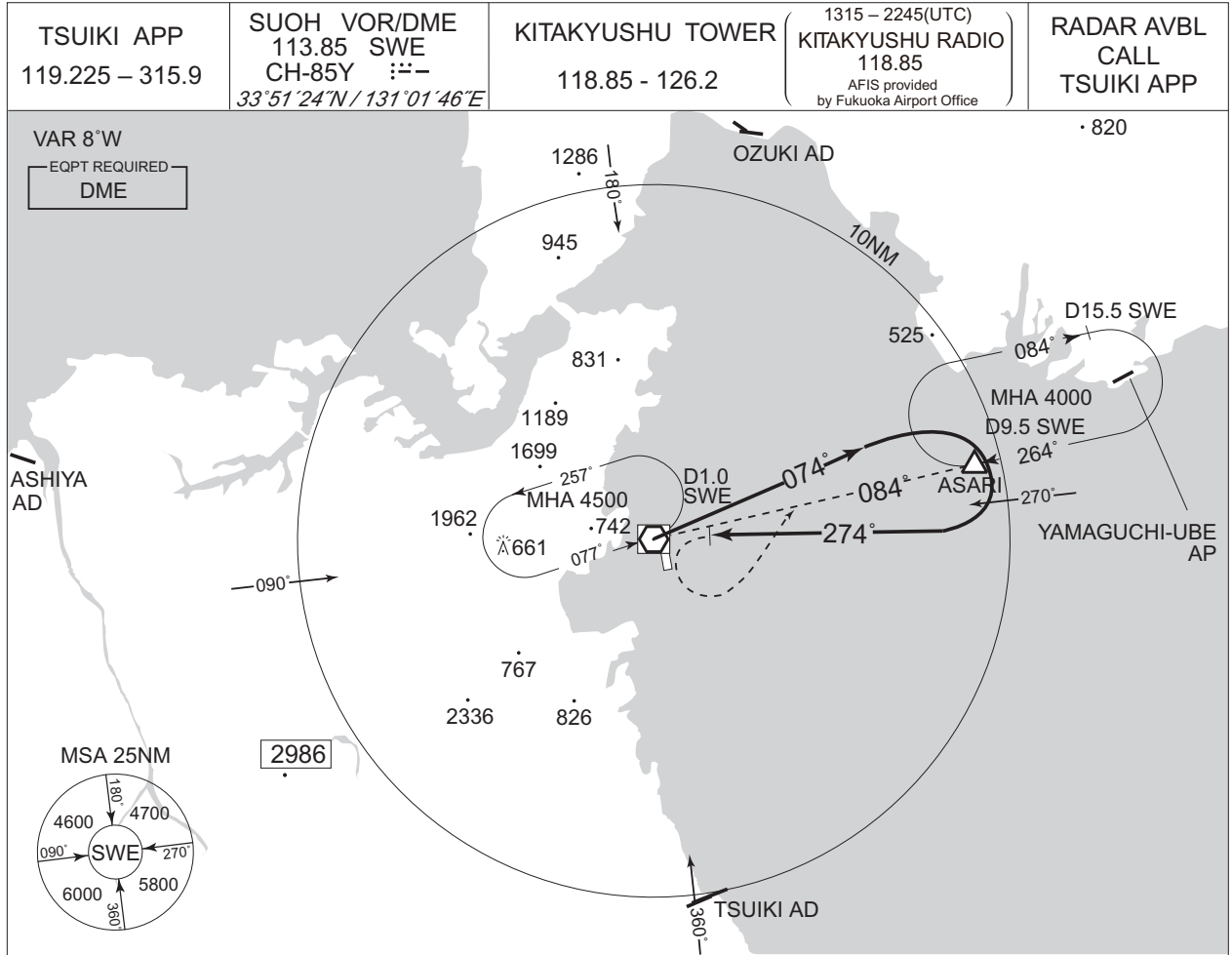


INSTRUMENT APPROACH CHART

RJFR / KITAKYUSHU

VOR B



MISSED APPROACH
At 1.0DME prior to SWE VOR/DME, turn left and climb to 4000FT via SWE R084 to ASARI and hold. Contact TSUIKI APP.

Remain within SWE 10DME

DME to SWE 1.0

MINIMA		AD elev. 21
CAT	CIRCLING	
	MDA(H)	VIS
A	500 (479)	1600
B		2400
C		3200
D	580 (559)	

CHANGE : Description of VAR.

Circling to East side of RWY only.