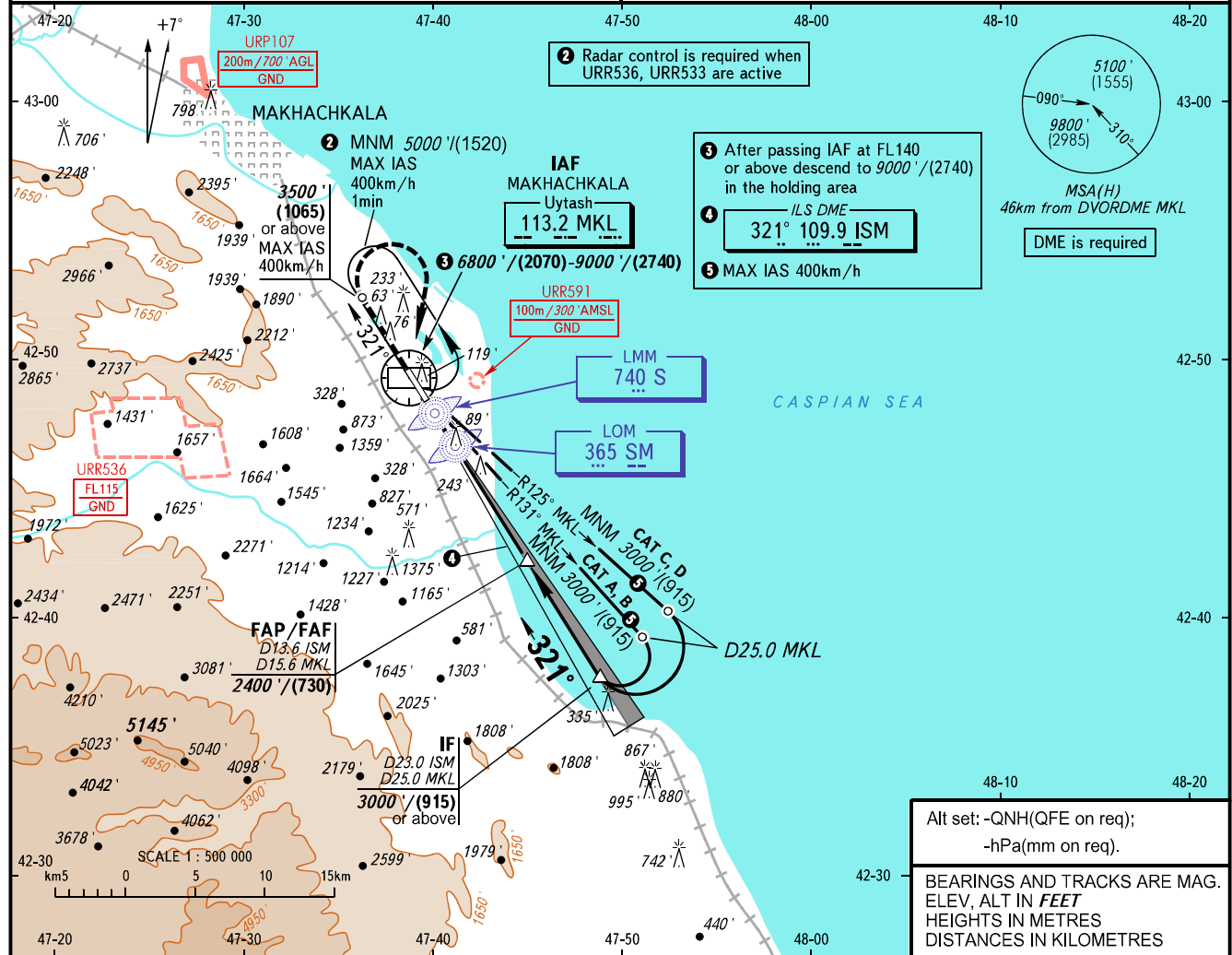


INSTRUMENT
APPROACH
CHART - ICAO

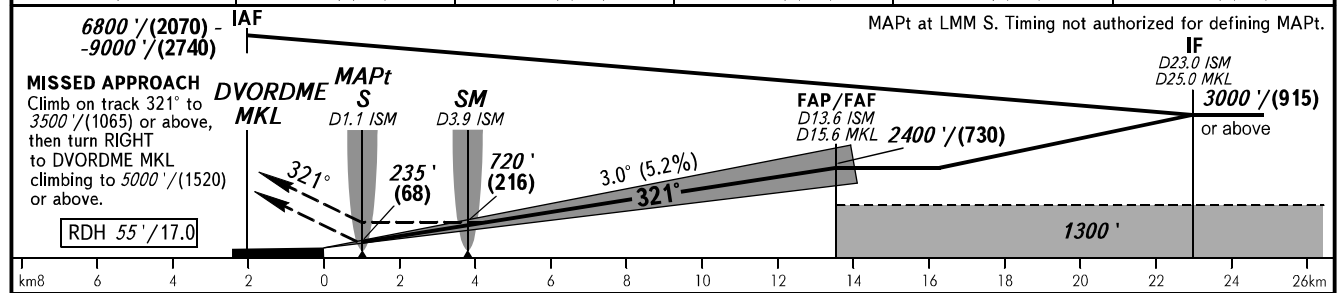
RADAR
START 121.300
121.300

MAKHACHKALA, RUSSIA
UYTASH
ILS Y CAT I, LOC Y RWY 32

TRANSITION LEVEL: ①
TRANSITION ALTITUDE: 10000'
AD ELEV: 16' / 5m
THR ELEV: 14' / 4.0m



DME MKL	6.0	8.0	10.0	12.0	14.0
ALTITUDE/HEIGHT	744' / (225)	1087' / (330)	1432' / (435)	1776' / (540)	2120' / (645)



		OCA(H)	A	B	C	D
Straight-in Approach	CAT I	2.5%*	466' (452')	476' (462')	485' (472')	495' (482')
	CAT I	3.5%*	192' (178')	201' (188')	211' (198')	221' (208')
	LOC		740' (730')	740' (730')	740' (730')	740' (730')
Circling			790' (770')	830' (810')	1720' (1700')	1870' (1860')

* MNM climb gradient

GROUND SPEED	RATE OF DESCENT	km/h										
		150	180	210	240	270	300	330	360	390	420	450
	m/s	2.2	2.6	3.0	3.5	3.9	4.3	4.8	5.2	5.6	6.1	6.5
	ft/min	427	512	597	682	768	853	938	1024	1109	1194	1280