

WHRLI SEVEN DEPARTURE (RNAV)

AL-360 (FAA)

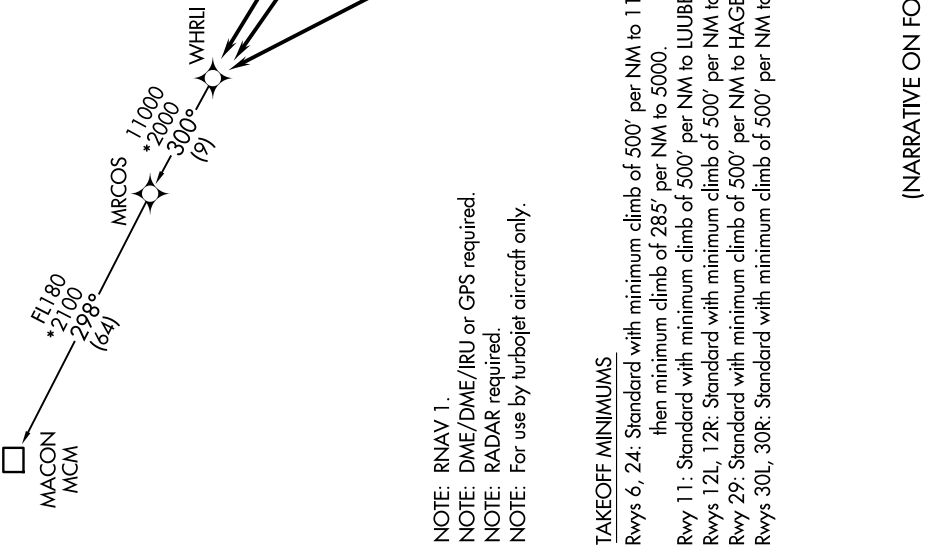
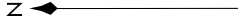
ST LOUIS LAMBERT INTL (STL)

ST. LOUIS, MISSOURI

NC-3, 20 MAR 2025 to 17 APR 2025

**TOP ALTITUDE:
5000**

D-AIS 125.025 379.925
 CLNC DEL 119.5 363.1
 CPDLC
 GND CON 121.9 348.6 (Inbound)
 121.65 377.175 (Outbound)
 118.925 227.125 (Rwy 11/29)
 ST. LOUIS TOWER 120.05 284.6 (Rwys 12L/30R, 24)
 118.5 257.7 (Rwy 12R/30L)
 132.475 239.275 (Rwys 6, 11/29)
 ST. LOUIS DEP CON 128.1 307.05



NOTE: RNAV 1.
 NOTE: DME/DME/IRU or GPS required.
 NOTE: RADAR required.
 NOTE: For use by turbojet aircraft only.

TAKEOFF MINIMUMS
 Rwy 6, 24: Standard with minimum climb of 500' per NM to 1120 then minimum climb of 285' per NM to 5000.
 Rwy 11: Standard with minimum climb of 500' per NM to LUUBE.
 Rwys 12L, 12R: Standard with minimum climb of 500' per NM to HEFNR.
 Rwy 29: Standard with minimum climb of 500' per NM to HAGEE.
 Rwys 30L, 30R: Standard with minimum climb of 500' per NM to PYUNG.

(NARRATIVE ON FOLLOWING PAGE)

NOTE: Chart not to scale.

WHRLI SEVEN DEPARTURE (RNAV)

ST. LOUIS, MISSOURI

ST LOUIS LAMBERT INTL (STL)

NC-3, 20 MAR 2025 to 17 APR 2025