

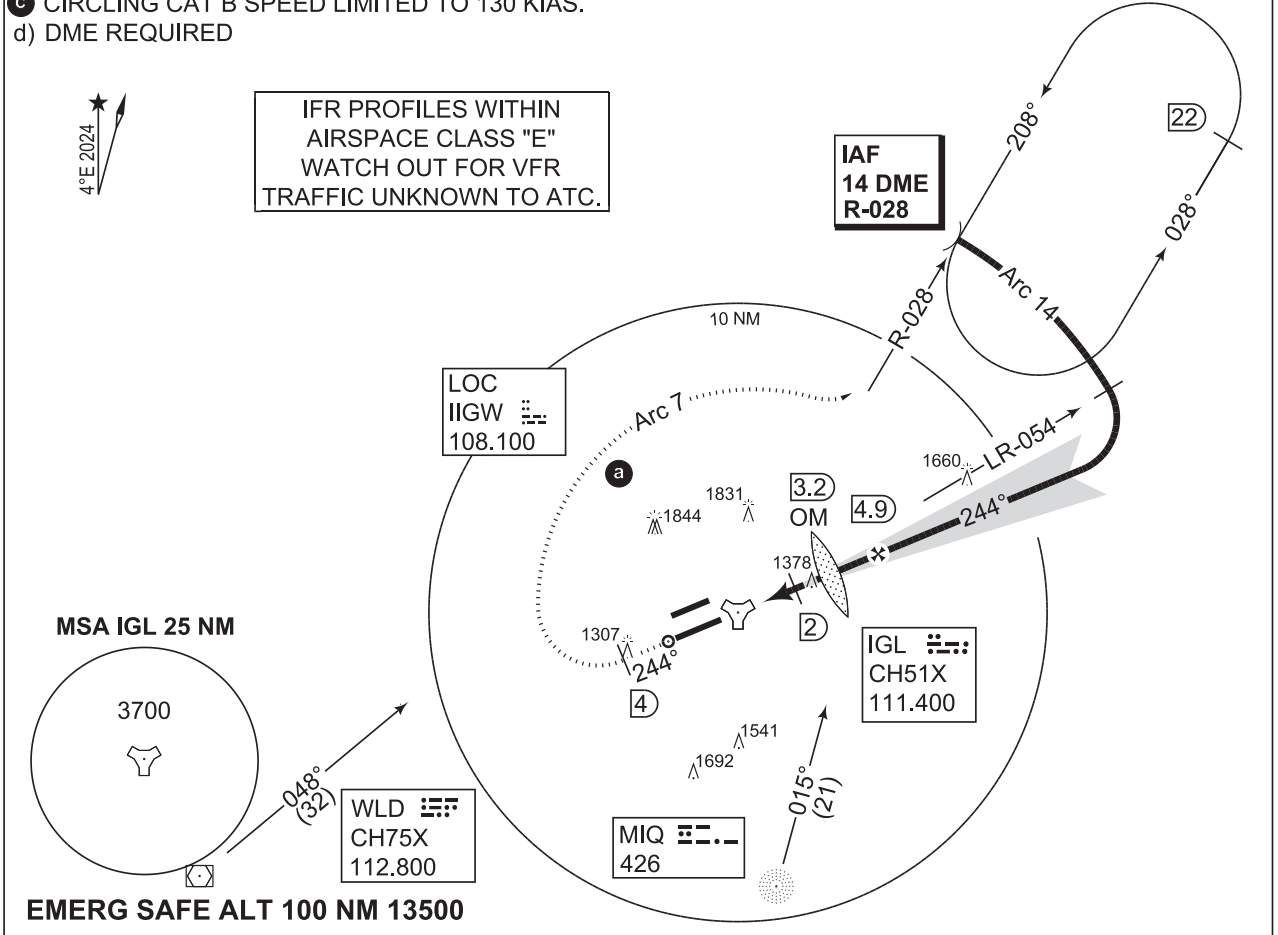
PANS-OPS INSTRUMENT APPROACH CHART AD ELEV 1203 **ILS X or LOC RWY 24L INGOLSTADT/MANCHING (ETSI)**

MUENCHEN RADAR 242.200	INGO RADAR 282.000 120.605 125.580	INGO TOWER 376.800 125.255	INGO ATIS 118.865
TACAN/LOCALIZER IGL CH51X/IIGW 108.100	APP COURSE 244°	GS INTCP ALT 3000	GS 3.0° / 5.2% DA See CAT TDZE 1197 ALS-LENGTH 900 M LDA 9646

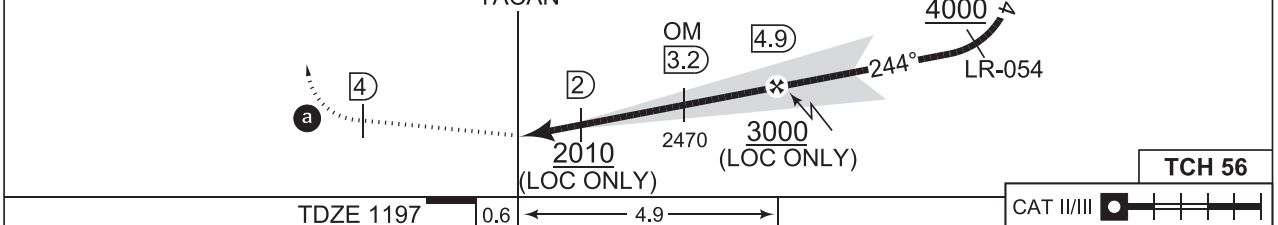
NOTE:

- a MISSED APCH TURN LIMITED TO 230 KIAS MAX.
- b CIRCLING NOT AUTHORIZED NORTH OF RWY 06L/24R.
- c CIRCLING CAT B SPEED LIMITED TO 130 KIAS.
- d) DME REQUIRED

IAF
 48°54.94'N
 011°45.43'E



MISSED APPROACH
 Climb on IGL track 244° to altitude 5000 ft. At IGL R-244/4 DME turn right to intercept Arc 7. Intercept IGL R-028 and proceed to IAF.



CATEGORY	A	B	C	D	E
ILS 24L	1397 - 0.8 550 200 (200-0.8/1.2)				1443 - 0.8 550 246 (300-0.8/1.3)
LOC 24L	1550 - 0.9 353 (400-0.9/1.5)		1550 - 0.9 353 (400-0.9/1.6)		
b CIRCLING	1700 - 2.3 497 (500-2.3)	c 1710 - 2.4 507 (600-2.4)	2480 - 5.0 1277 (1300-5.0)	2630 - 5.0 1427 (1500-5.0)	

ILS X or LOC RWY 24L 48°42.94'N 011°32.02'E **INGOLSTADT/MANCHING (ETSI)**