

STANDARD DEPARTURE CHART - INSTRUMENT

RJAH / HYAKURI

SID and TRANSITION

HOKTA FIVE DEPARTURE

RWY 03R/03L : Climb via RWY HDG until 1.0NM from RWY end/HUC 1.4DME,
turn right within 5.0NM....

RWY 21R/21L : Turn left within 6.0NM....

....climb via HUC R071 to HOKTA.

Cross HUC R071/19.3DME at or below 8000FT, cross HOKTA at or
above 11000FT.

Note1 : Take off RWY 21R/21L, cross HUC R130 at or below 5000FT.

Note2 : This SID for TACAN equipped aircraft only.

HOKTA EAST FIVE DEPARTURE

RWY 03R/03L : Climb via RWY HDG until 1.0NM from RWY end/HUC 1.4DME,
turn right within 5.0NM....

RWY 21R/21L : Turn left within 6.0NM....

....climb via HUC R091 to HUC 27.0DME, turn left via HUC 27.0DME
counterclockwise ARC to HOKTA.

Cross HUC R091/23.0DME at or below 8000FT, cross HOKTA at or
above 11000FT.

Note1 : Take off RWY 21R/21L, cross HUC R130 at or below 5000FT.

Note2 : This SID for TACAN equipped aircraft only.

MATSUSHIMA TRANSITION

From over HOKTA, via CVT R015 to CVT 59.0DME, MXT R195 to MXT TACAN.
Cross CVT R015/59.0DME (MXT R195/103.0DME) at assigned altitude.

Note CVT R015/59.0DME (MXT R195/103.0DME) : MXT MRA 12000FT.

DAIGO TRANSITION

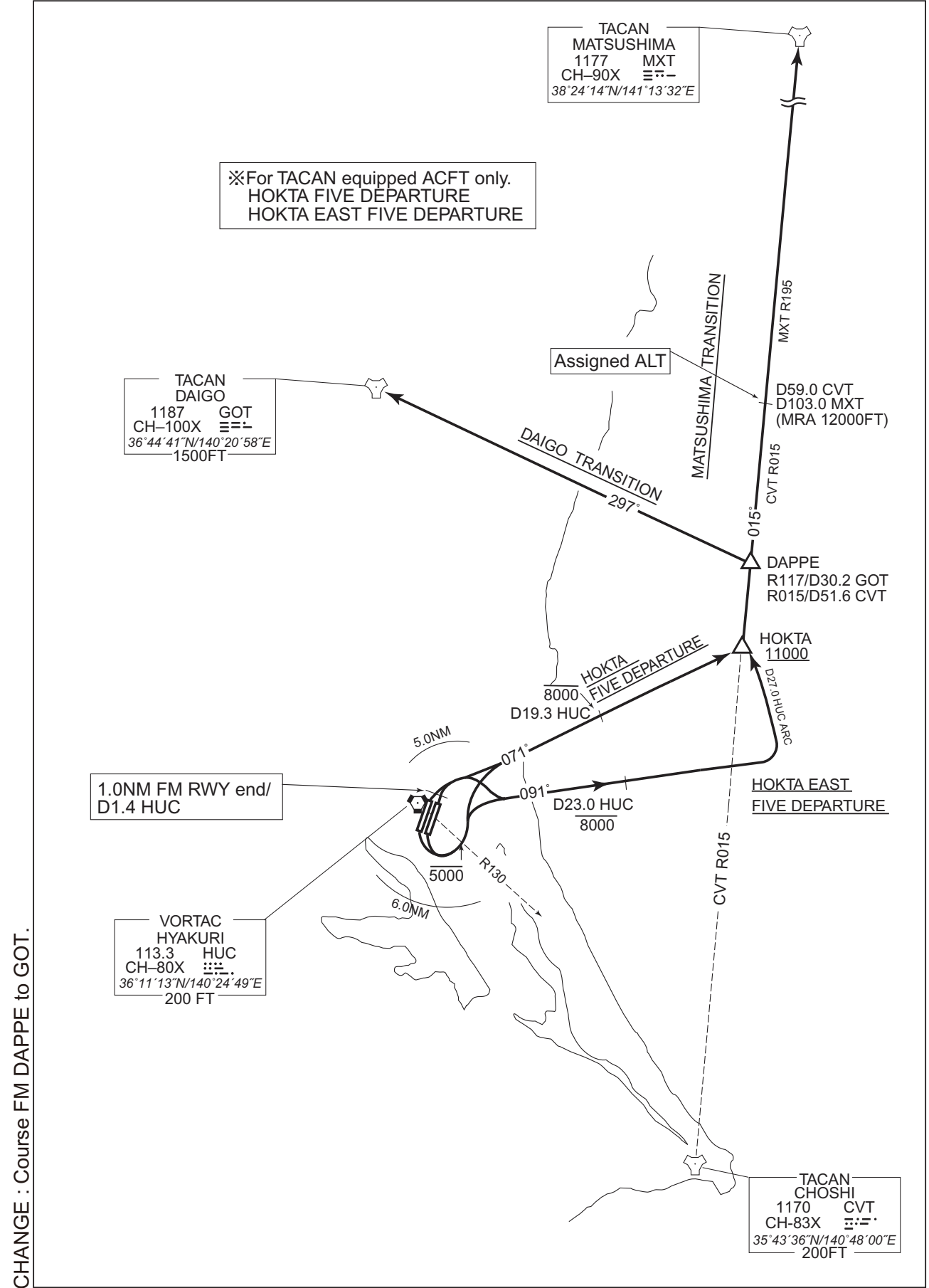
From over HOKTA, via CVT R015 to DAPPE, via GOT R117 to GOT TACAN.

CHANGE : Course FM DAPPE to GOT.

STANDARD DEPARTURE CHART - INSTRUMENT

RJAH / HYAKURI

SID and TRANSITION



CHANGE : Course FM DAPPE to GOT.