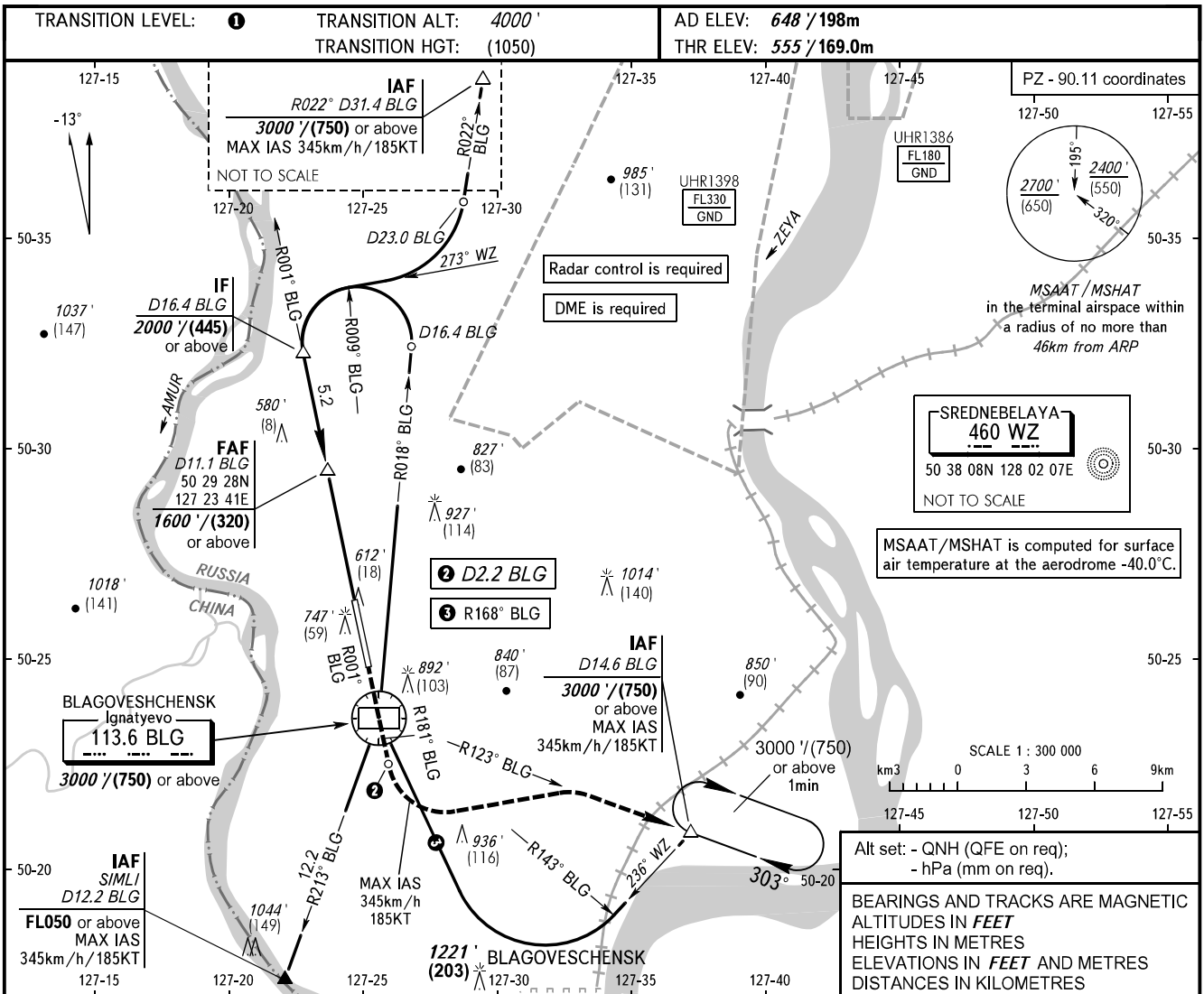


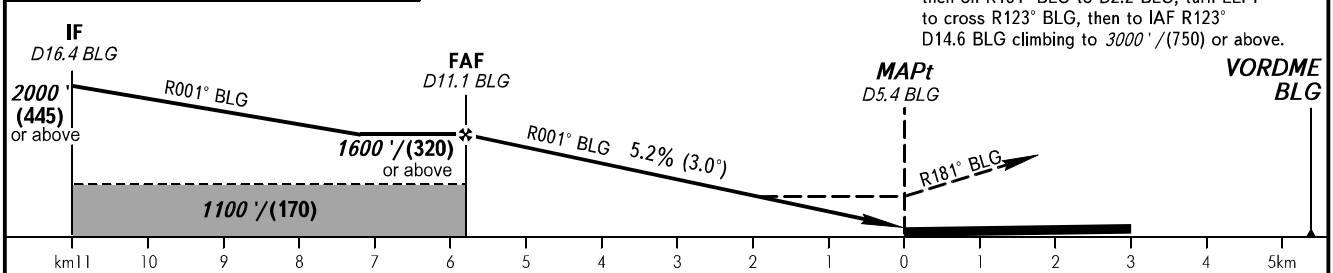
**INSTRUMENT
APPROACH
CHART - ICAO**

BLAGOVESHCHENSK TOWER 127.200

**BLAGOVESHCHENSK, RUSSIA
IGNATYEVO
VOR RWY 18**



DME BLG	10.0	8.0
ALTITUDE/HEIGHT	1413' / (262)	1069' / (157)



OCA(H)		A	B	C	D				
Straight-in Approach	1000' (440')	1000' (440')	1000' (440')	1000' (440')	1000' (440')				
	(135)	(135)	(135)	(135)	(135)				
Circling		1190' (540')	1220' (570')	1330' (680')	1340' (700')				
		(165)	(175)	(210)	(215)				
GROUND SPEED	km/h		150	180	210	240	270	300	330
	kt		81	97	113	130	146	162	178
RATE OF DESCENT	m/s		2.2	2.6	3.0	3.5	3.9	4.3	4.8
	ft/min		427	512	597	682	768	853	938

1 **TRANSITION LEVEL:**
- FL050 when QNH is 1013 hPa (760mm mercury column) or above;
- FL060 when QNH is 977 hPa (733mm mercury column) or above, but less than 1013 hPa (760mm mercury column);
- FL070 when QNH is less than 977 hPa (733mm mercury column).

WARNING
FAF - MAPt 5.8km. Timing not authorized for defining MAPt.

Visual manoeuvring to the west of AD is PROHIBITED.

CHANGE: New chart