

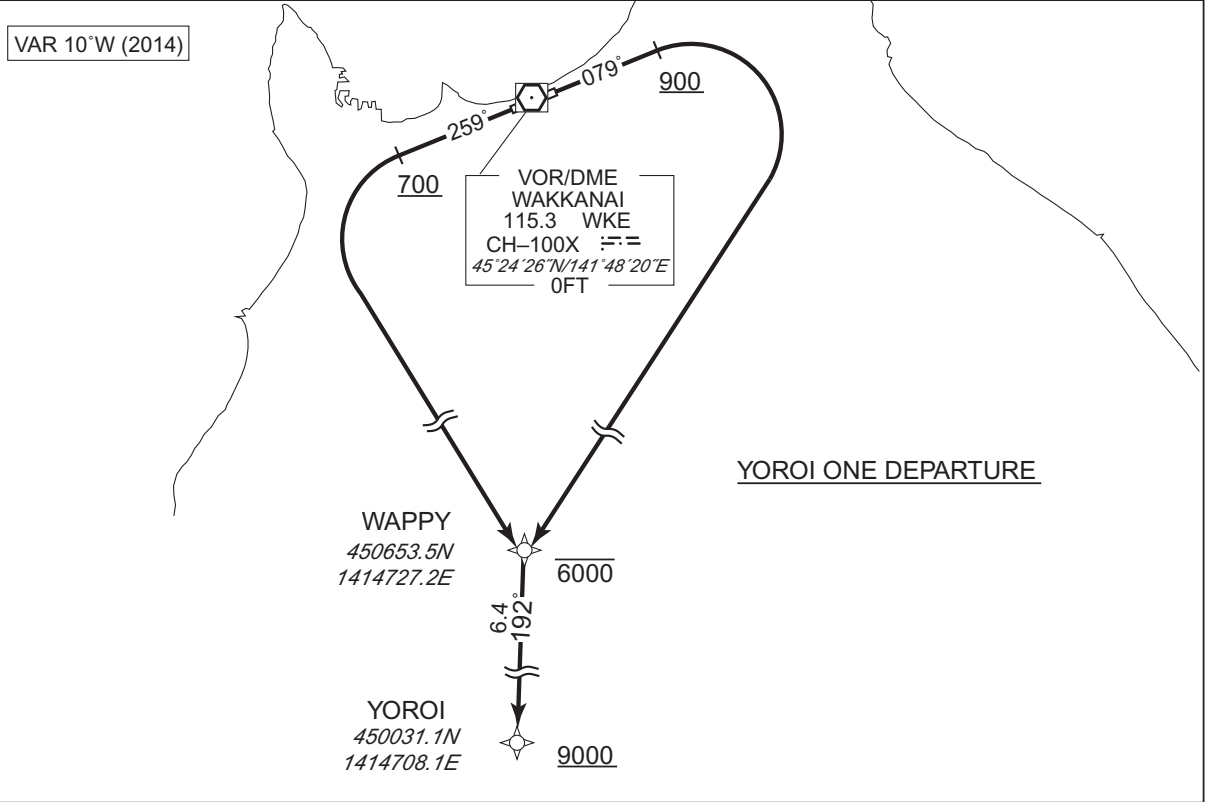
STANDARD DEPARTURE CHART - INSTRUMENT

RJCW / WAKKANAI RNAV SID

YOROI ONE DEPARTURE

RNP1

Note GNSS required.



YOROI ONE DEPARTURE

RWY08 : Climb on HDG079° at or above 900FT, turn right direct to WAPPY at or below 6000FT, to YOROI at or above 9000FT.

RWY26 : Climb on HDG259° at or above 700FT, turn left direct to WAPPY at or below 6000FT, to YOROI at or above 9000FT.

Note RWY08 : 6.0% climb gradient required up to 900FT.  
RWY26 : 5.0% climb gradient required up to 700FT.

RWY08

Serial Number	Path Descriptor	Waypoint Identifier	Fly Over	Course [°M(°T)]	Magnetic Variation	Distance (NM)	Turn Direction	Altitude (FT)	Speed (KIAS)	Vertical Angle	Navigation Specification
001	VA	—	—	079 (068.8)	-9.9	—	—	+900	—	—	RNP1
002	DF	WAPPY	—	—	-9.9	—	R	-6000	—	—	RNP1
003	TF	YOROI	—	192 (182.0)	-9.9	6.4	—	+9000	—	—	RNP1

RWY26

Serial Number	Path Descriptor	Waypoint Identifier	Fly Over	Course [°M(°T)]	Magnetic Variation	Distance (NM)	Turn Direction	Altitude (FT)	Speed (KIAS)	Vertical Angle	Navigation Specification
001	VA	—	—	259 (248.9)	-9.9	—	—	+700	—	—	RNP1
002	DF	WAPPY	—	—	-9.9	—	L	-6000	—	—	RNP1
003	TF	YOROI	—	192 (182.0)	-9.9	6.4	—	+9000	—	—	RNP1

CHANGE : Navigation Specification(Basic RNP1 → RNP1).

**INTENTIONALLY LEFT BLANK**