

STANDARD DEPARTURE CHART -INSTRUMENT

RJNT / TOYAMA

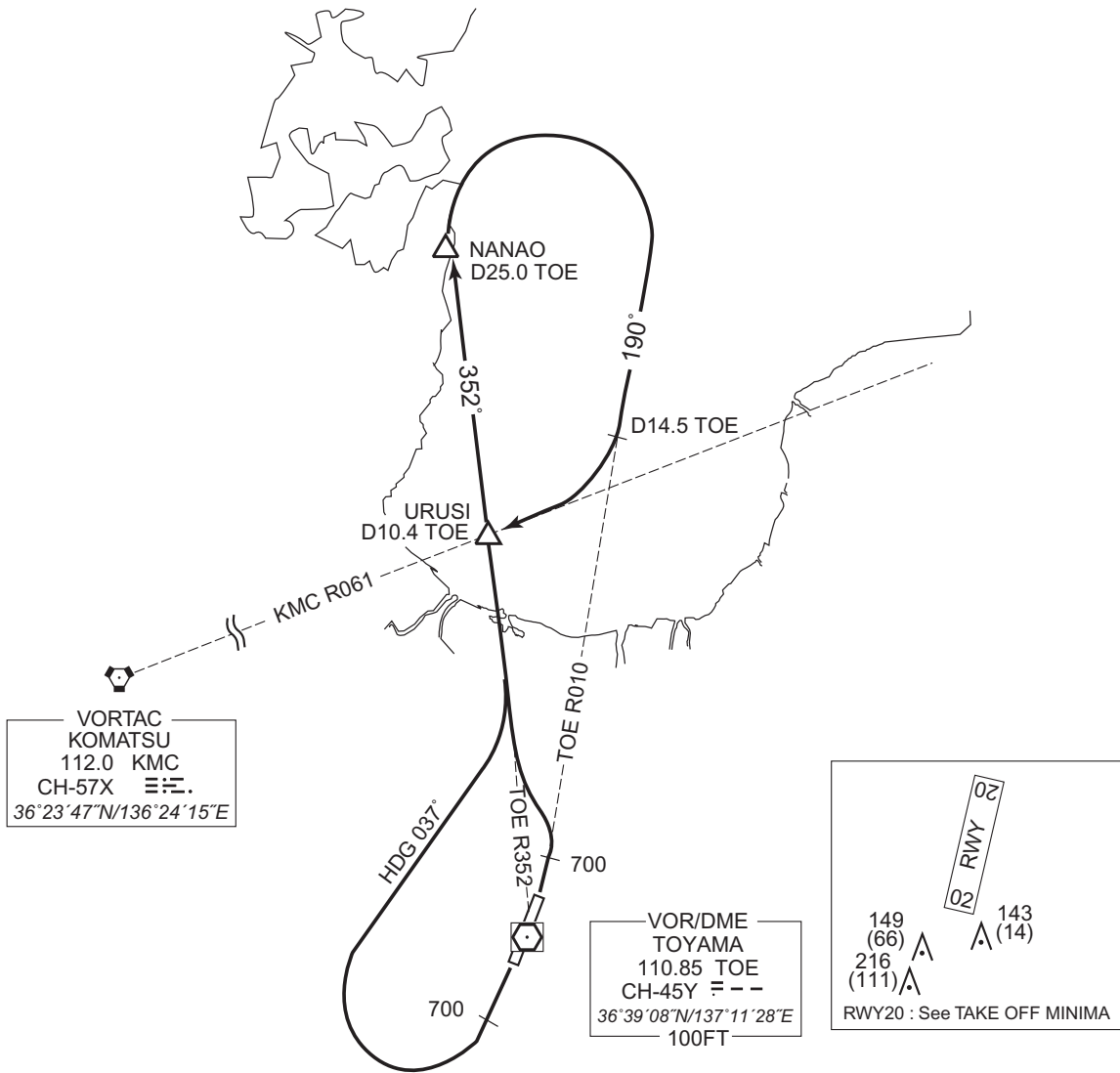
SID

URUSI REVERSAL FOUR DEPARTURE

RWY02 : Climb RWY HDG until 700FT, turn left, climb...

RWY20 : Climb RWY HDG until 700FT, turn right HDG 037° to intercept and proceed...
...via TOE R352 to NANAO, turn right, proceed via TOE R010 to intercept and proceed via KMC R061 to URUSI.

NOTE RWY02 : 4.0% climb gradient required up to 1000FT.
OBST ALT 621FT located at 2.8NM 345° FM end of RWY02.
RWY20 : 5.0% climb gradient required up to 2000FT.
OBST ALT 762FT located at 3.8NM 202° FM end of RWY20.



CHANGE : Description of PROC name.