

STANDARD DEPARTURE CHART-INSTRUMENT

RJBT / TAJIMA

SID

MIYAZU THREE DEPARTURE

RWY01 : Climb RWY HDG to 1900FT, turn right HDG150°...

RWY19 : Climb RWY HDG to 1900FT, turn left HDG060°...

... to intercept and proceed via YME R285 to YME VOR/DME.

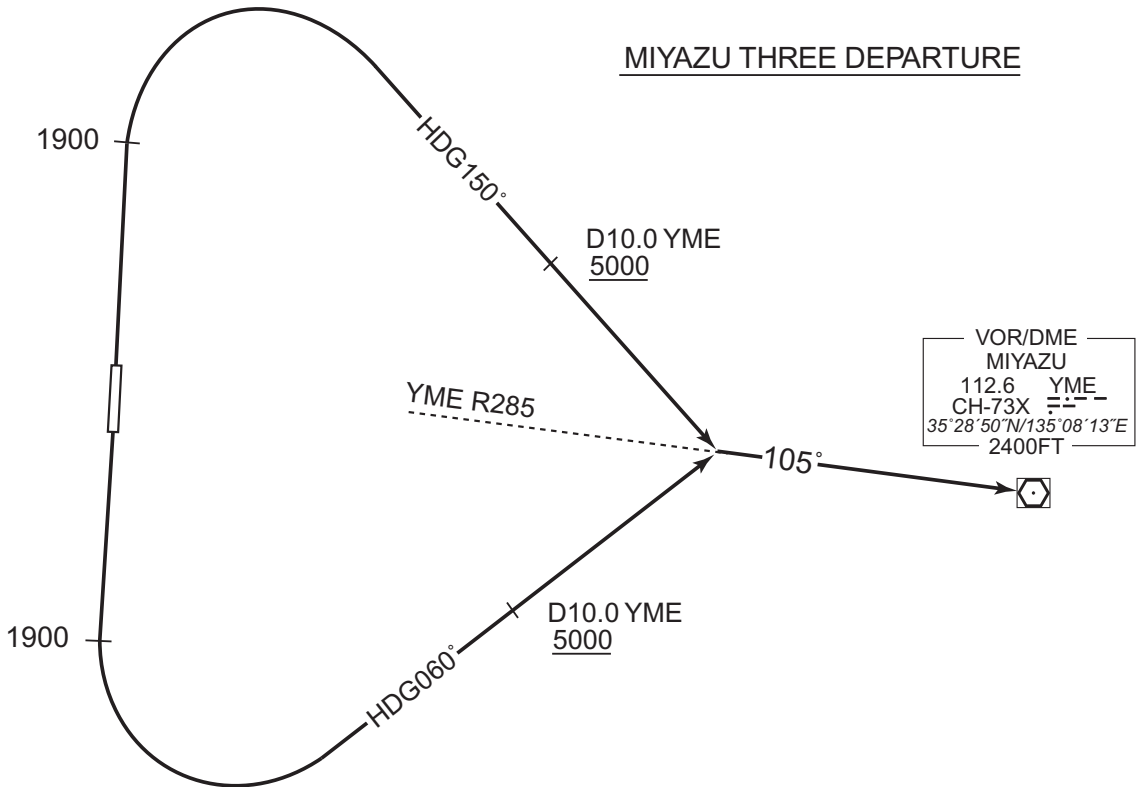
Cross YME 10.0DME at or above 5000FT.

Note RWY01 : 5.0% climb gradient required up to 2200FT.

OBST ALT 1956FT located at 5.6NM 007° FM end of RWY01.

RWY19 : 5.0% climb gradient required up to 3200FT.

OBST ALT 2888FT located at 8.3NM 144° FM end of RWY19.



CHANGE : PROC renamed. TAJIMA VOR/DME(THE) abolished.