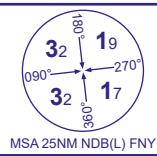


INSTRUMENT CHART - ICAO

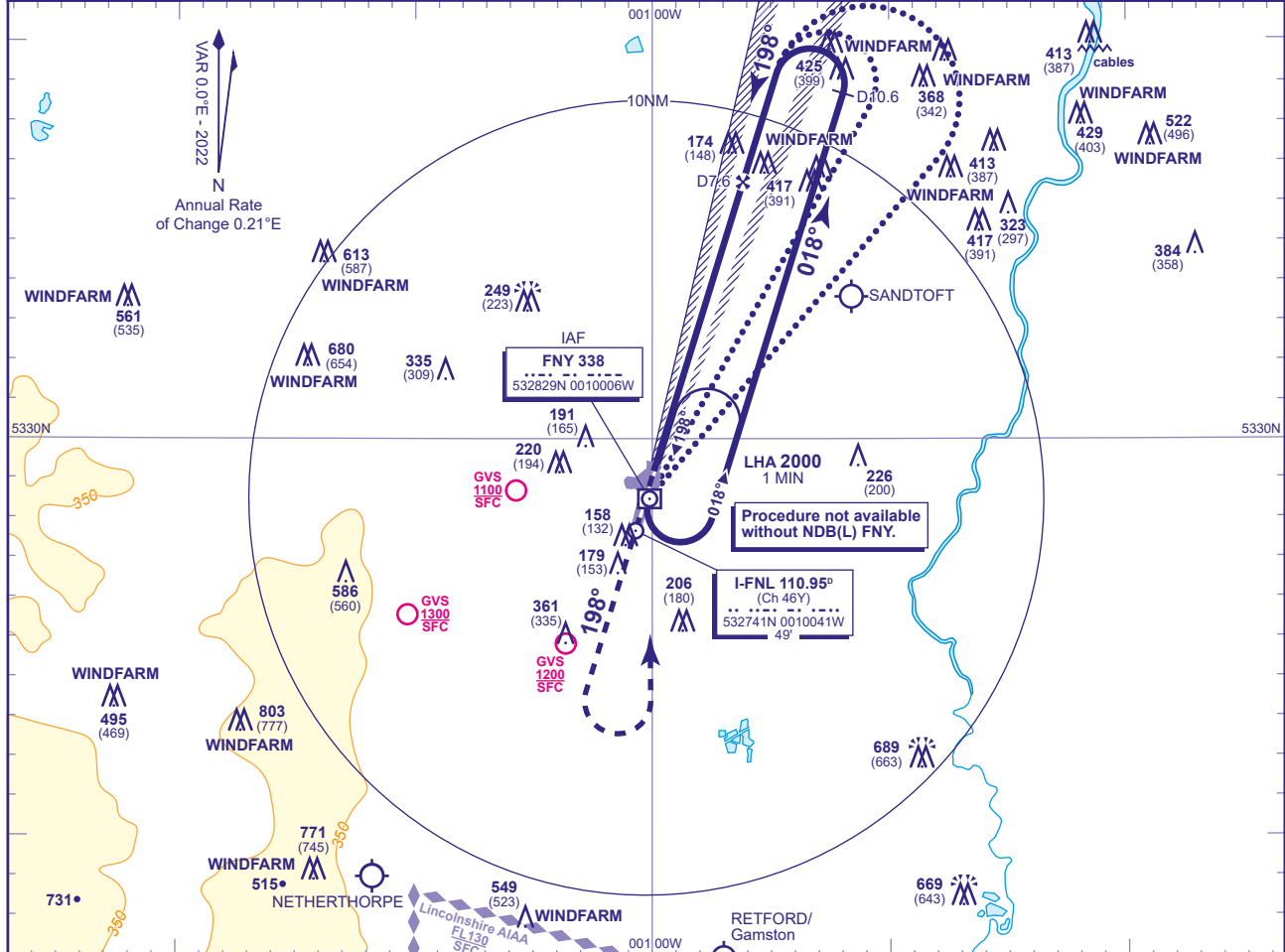
WINDFARM

ILS/DME RWY 20
(ACFT CAT A,B,C,D)



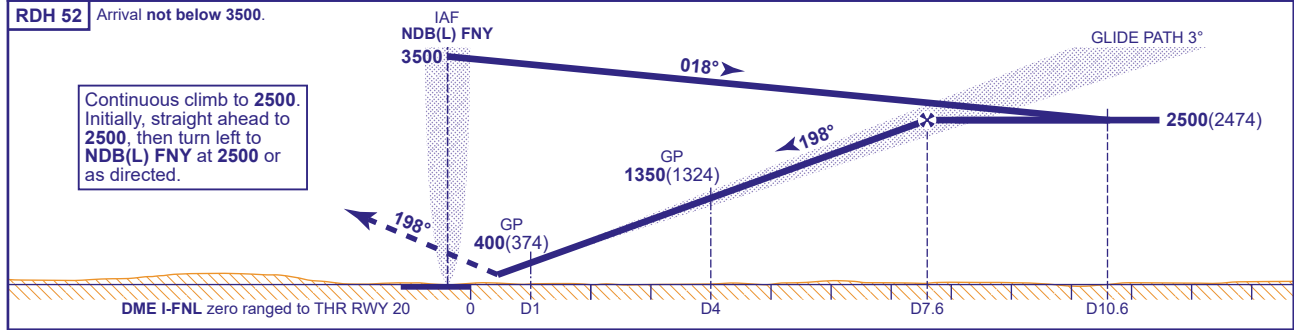
APP	126.225	DONCASTER APPROACH	AD ELEVATION	55
TWR	128.775	DONCASTER TOWER	THR ELEVATION	26
RAD	126.225, 129.055	DONCASTER RADAR	OBSTACLE ELEVATION	803 AMSL (777) (ABOVE THR)
ATIS	134.955	DONCASTER INFORMATION	BEARINGS ARE MAGNETIC	

TRANSITION ALTITUDE
5000



RECOMMENDED PROFILE GLIDE PATH 3°, 318FT/NM

DME I-FNL	7	6	5	4	3	2	1
ALT(HGT)	2310(2284)	1990(1964)	1670(1644)	1350(1324)	1030(1004)	720(694)	400(374)



Continuous climb to 2500. Initially, straight ahead to 2500, then turn left to NDB(L) FNY at 2500 or as directed.

Aircraft Category	A	B	C	D	Rate of descent	G/S KT	160	140	120	100	80
	CAT I	180(154)	186(160)	195(169)		205(179)	FT/MIN	850	740	640	530
VM(C)OCA (OCH AAL)	Total Area	480(425)	550(495)	760(705)	760(705)						

ALTERNATIVE PROCEDURE
From overhead NDB(L) FNY (IAF) **not below 3500**(3474) fly outbound on NDB(L) QDR 030° (CAT A,B) or NDB(L) QDR 041° (CAT C,D) descending to 2500(2474). At I-FNL D10.6 turn left to establish on the localiser then continue as for main procedure.

Aircraft Unable to Receive DME
Advise ATC and continue as for main or alternative procedure. Radar ranges will be provided by ATC at 10NM outbound and at 7NM and 4NM inbound.

NOTE 1 Aircraft will normally be required to hold not lower than 3500. Lowest altitude to commence procedure from hold is 2500.
2 CAUTION: Pilots of inbound traffic to note proximity of Sandtoft aerodrome to instrument approach procedures.

CHANGE (4/21): MAG VAR. MAG TRACKS.