

LOM OS <b>515</b>	APP CRS <b>093°</b>	Rwy Idg TDZE Apt Elev	<b>5004</b> <b>905</b> <b>905</b>
----------------------	------------------------	-----------------------------	---

# NDB RWY 9R

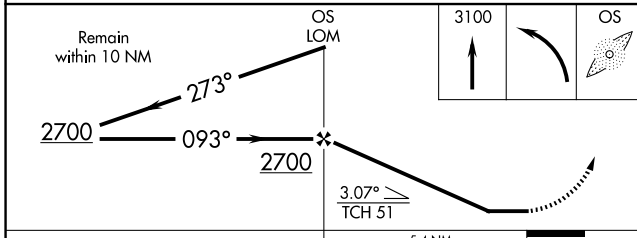
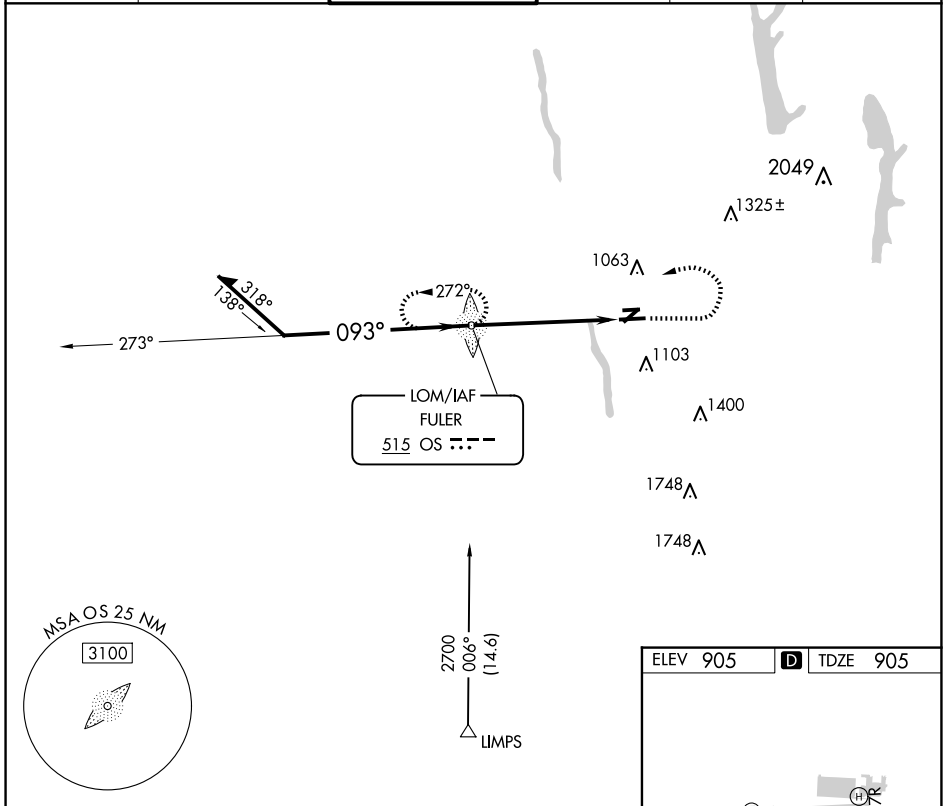
OHIO STATE UNIVERSITY (OSU)

**⚠** When local altimeter setting not received, use John Glenn Columbus Intl altimeter setting and increase all MDAs 40 feet and S-9R visibility Cat C ½ SM and Cat D and Circling Cat D ½ SM. Circling Rwy 23 NA at night.



**MISSED APPROACH:** Climb to 3100 then left turn direct OS LOM and hold.

ATIS <b>121.35</b>	COLUMBUS APP CON <b>125.95 317.775</b>	STATE TOWER* <b>118.8 (CTAF) 254.325</b>	GND CON <b>121.7</b>	CLNC DEL <b>121.7</b>	UNICOM <b>122.95</b>
-----------------------	---	---	-------------------------	--------------------------	-------------------------



ELEV 905	<b>D</b> TDZE 905
----------	-------------------

REIL Rwy 27L  
HIRL Rwy 9R-27L  
MIRL Rwys 9L-27R

FAF to MAP 5.4 NM					
Knots	60	90	120	150	180
Min:Sec	5:24	3:36	2:42	2:10	1:48

EC-2, 20 MAR 2025 to 17 APR 2025

EC-2, 20 MAR 2025 to 17 APR 2025