

STANDARD ARRIVAL CHART - INSTRUMENT

VAR1.8° W

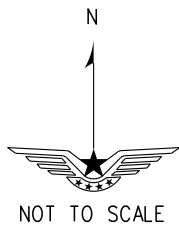
D-ATIS 128.45
TWR(E) 118.1(118.85)
TWR(W) 130.6(118.85)

ZPPP KUNMING/Changshui
RNAV RWY21/22(ELASU)

BEARINGS ARE MAGNETIC.
ALTITUDES, ELEVATIONS
AND HEIGHTS IN METERS.
DME DISTANCES IN
NAUTICAL MILES.
DISTANCES IN KM.

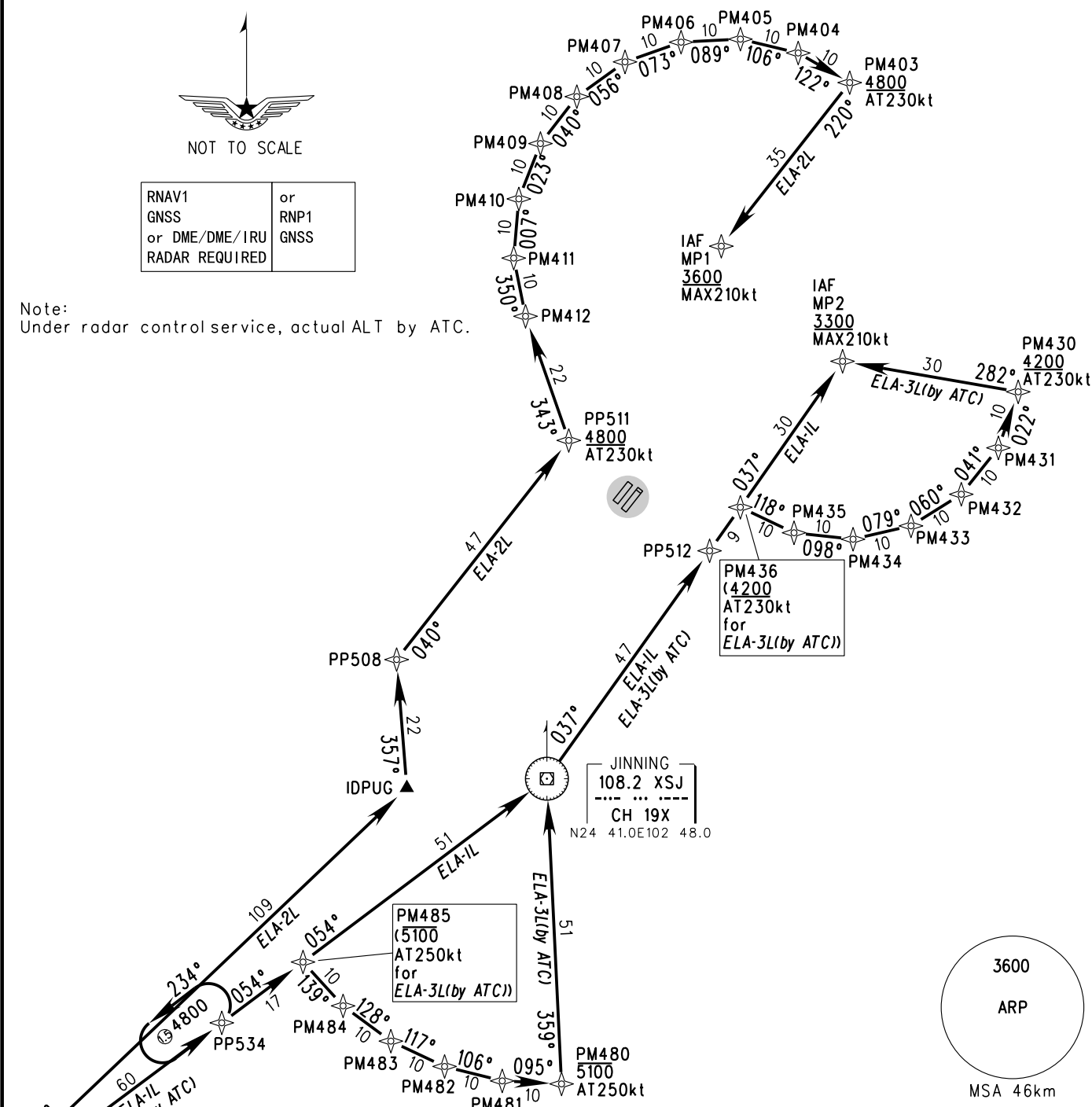
APP01 119.0(125.55)
APP02 123.8(125.55)
APP03 124.25(127.9)
APP04 121.15(126.55)
APP05 120.35(127.9)
APP07 119.225

TL 6000
TA 5400
5700(QNH ≥ 1031hPa)
5100(QNH ≤ 979hPa)



| | |
|---|--------------------|
| RNAV1 GNSS or DME/DME/IRU RADAR REQUIRED | or RNP1 GNSS |
|---|--------------------|

Note:
Under radar control service, actual ALT by ATC.



| STAR | ROUTING |
|-----------------|---|
| ELA-1L | ELASU-PP534-PM485-XSJ-PP512-PM436-MP2 |
| ELA-2L | ELASU-IDPUG-PP508-PP511-PM412-PM411-PM410-PM409-PM408-PM407-PM406-PM405-PM404-PM403-MP1 |
| ELA-3L (by ATC) | ELASU-PP534-PM485-PM484-PM483-PM482-PM481-PM480-XSJ-PP512-PM436-PM435-PM434-PM433-PM432-PM431-PM430-MP2 |

Changes: New chart.