

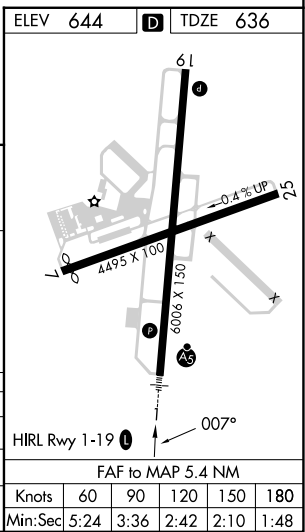
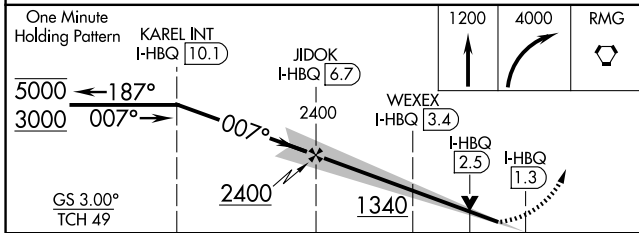
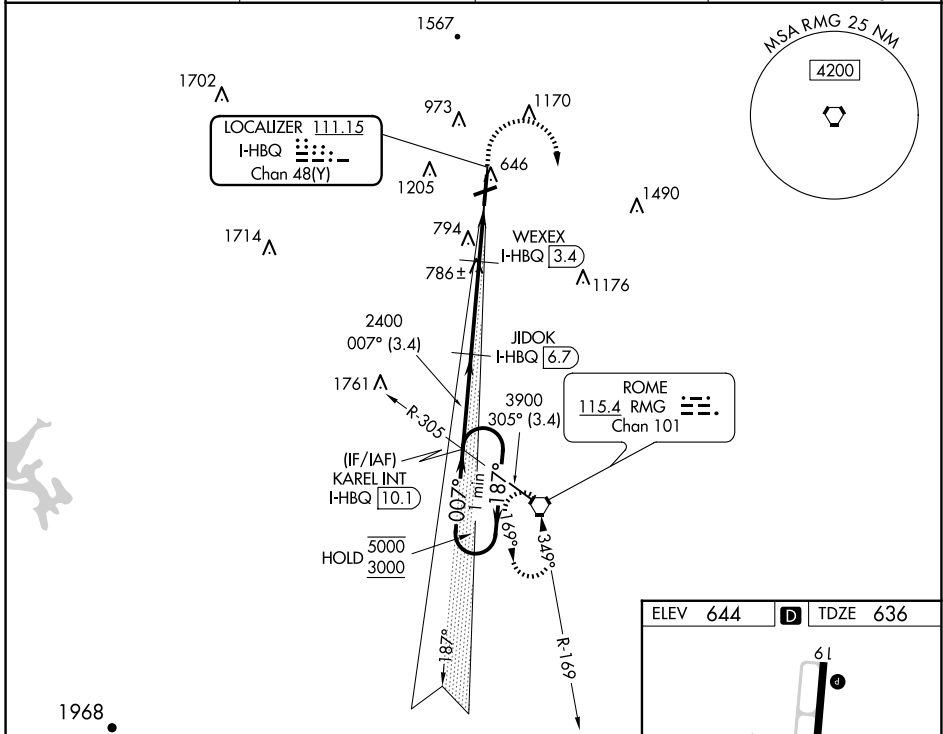
| | | |
|---|------------------------|--|
| LOC/DME I-HBQ 111.15 Chan 48(Y) | APP CRS 007° | Rwy Idg TDZE 6066 636 Apt Elev 644 |
|---|------------------------|--|

ILS or LOC RWY 1

RICHARD B RUSSELL RGNL - J H TOWERS FLD (RMG)

| | | |
|---|-----------|---|
| DME required for LOC only. | MALSR | MISSED APPROACH: Climb to 1200 then climbing right turn to 4000 direct RMG VORTAC and hold, continue climb-in-hold to 4000. |
| ⚠ Rwy 1 helicopter visibility reduction below 3/4 SM NA. Circling NA west of Rwy 1-19 at night. Circling NA northwest of Rwy 7 and 19. For inop ALS, increase S-ILS 1 all Cats visibility to 7/8 SM and increase S-LOC 1 Cats A/B visibility to 1 SM and increase Cats C/D visibility to 1 1/8 SM. | | |

| | | | |
|------------------------|--|-----------------------|-----------------------------------|
| ASOS 119.925 | ATLANTA CENTER 124.5 270.325 | GCO 121.725 | UNICOM 122.725 (CTAF) 0 |
|------------------------|--|-----------------------|-----------------------------------|



| | | | | |
|-------------------|-----------------------|-----------------------|-------------------------------|-------------------------|
| CATEGORY | A | B | C | D |
| S-ILS 1 | | 941-3/4 | 305 (300-3/4) | |
| S-LOC 1 | | 1040-3/4 | 404 (400-3/4) | |
| C CIRCLING | 1140-1 496 (500-1) | 1200-1 556 (600-1) | 1480-2 1/2 836 (900-2 1/2) | 1840-3 1196 (1200-3) |

ILS or LOC RWY 1

SE-4, 20 MAR 2025 to 17 APR 2025

SE-4, 20 MAR 2025 to 17 APR 2025