

STANDARD ARRIVAL
CHART - INSTRUMENT
RNAV (GPS, DME/DME, DME/DME/IRU)

TRANSITION
ALTITUDE 5000
VAR 2° E

HAHN ATIS	136.355
LANGEN RADAR	125.600

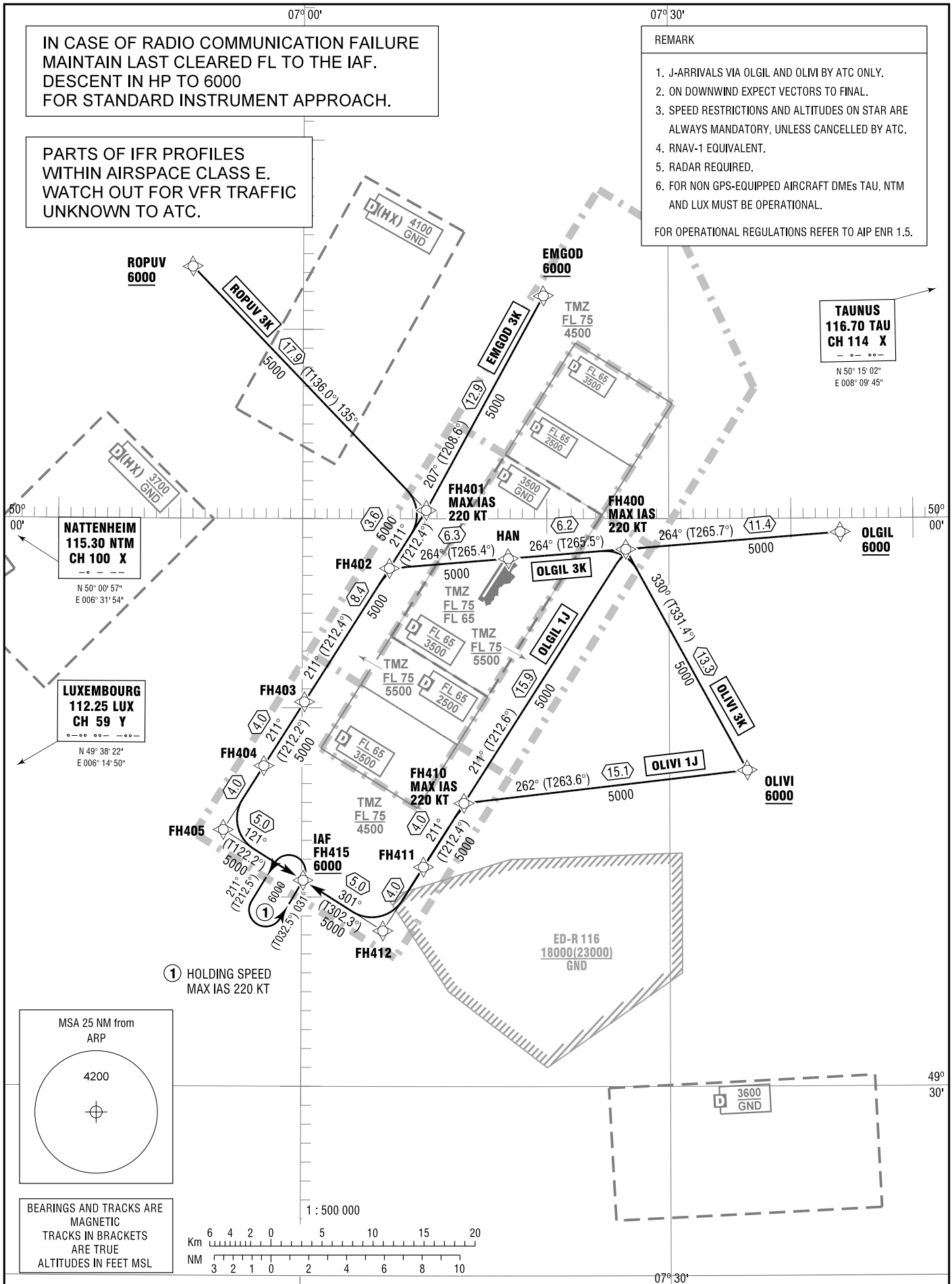
FRANKFURT-HAHN
RWY 03

IN CASE OF RADIO COMMUNICATION FAILURE
MAINTAIN LAST CLEARED FL TO THE IAF.
DESCENT IN HP TO 6000
FOR STANDARD INSTRUMENT APPROACH.

PARTS OF IFR PROFILES
WITHIN AIRSPACE CLASS E.
WATCH OUT FOR VFR TRAFFIC
UNKNOWN TO ATC.

REMARK

1. J-ARRIVALS VIA OLGIL AND OLIVI BY ATC ONLY.
 2. ON DOWNWIND EXPECT VECTORS TO FINAL.
 3. SPEED RESTRICTIONS AND ALTITUDES ON STAR ARE ALWAYS MANDATORY, UNLESS CANCELLED BY ATC.
 4. RNAV-1 EQUIVALENT.
 5. RADAR REQUIRED.
 6. FOR NON GPS-EQUIPPED AIRCRAFT DMEs TAU, NTM AND LUX MUST BE OPERATIONAL.
- FOR OPERATIONAL REGULATIONS REFER TO AIP ENR 1.5.

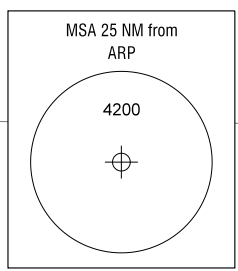


NATTENHEIM
115.30 NTM
CH 100 X
N 50° 00' 57"
E 006° 31' 54"

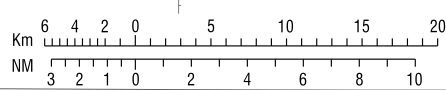
LUXEMBOURG
112.25 LUX
CH 59 Y
N 49° 38' 22"
E 006° 14' 50"

TAUNUS
116.70 TAU
CH 114 X
N 50° 15' 02"
E 008° 09' 45"

① HOLDING SPEED
MAX IAS 220 KT



BEARINGS AND TRACKS ARE
MAGNETIC
TRACKS IN BRACKETS
ARE TRUE
ALTITUDES IN FEET MSL



Correction: Airspace.