

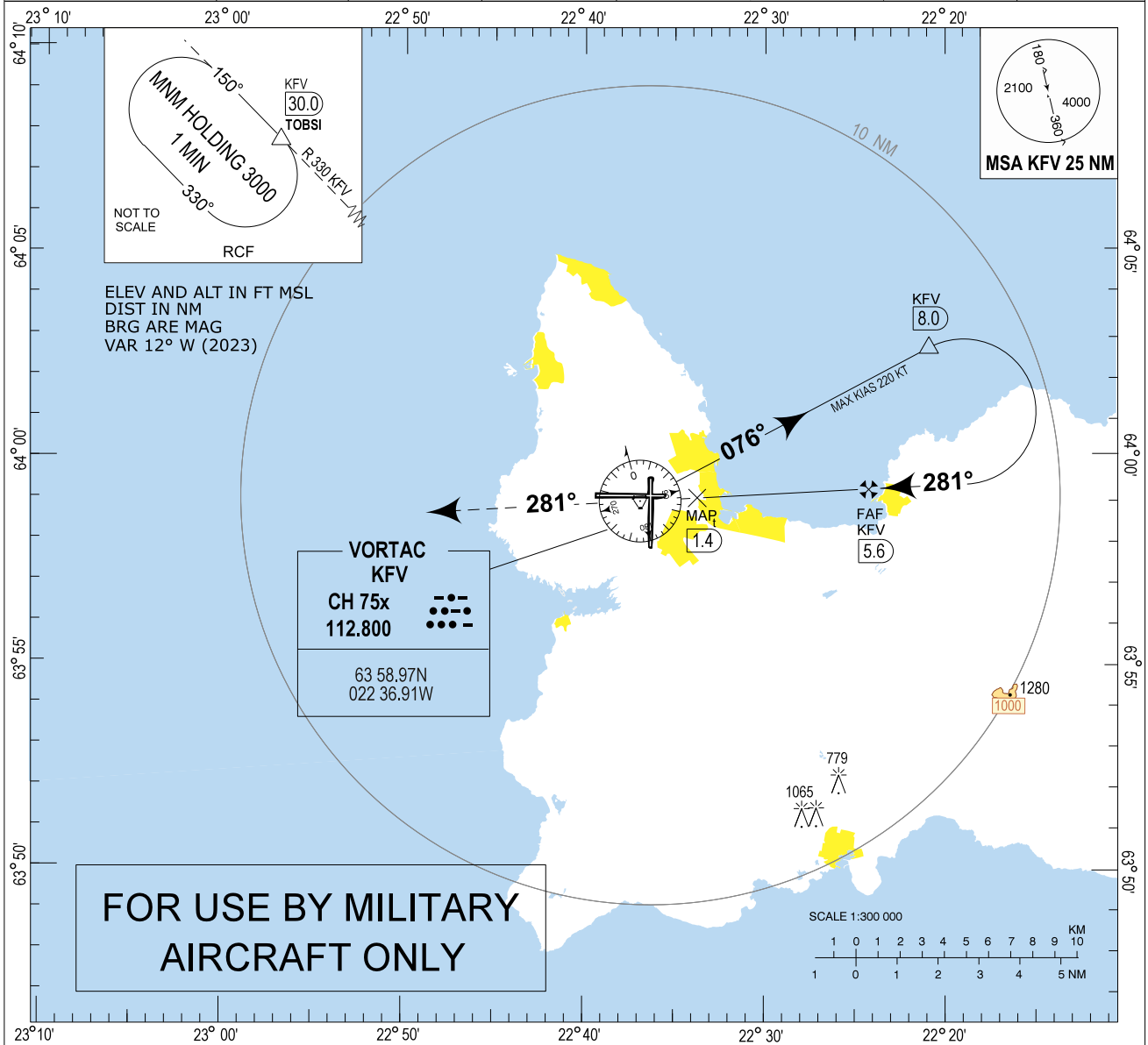
Keflavik MILITARY VORTAC RWY 28 (CAT C-D)

MIPS
INSTRUMENT APPROACH CHART

VORTAC RWY 28 (CAT C-D)
KEFLAVIK (BIKF)

AD ELEV 170

REYKJAVIK CONTROL 119.700	KEFLAVIK ATIS 128.300 311.600	KEFLAVIK APPROACH 119.300	KEFLAVIK TOWER 118.300	KEFLAVIK GND 121.900
VORTAC KFV CH 75x/112.800	APP CRS 281°	FAF ALT 1800 FT	Decent GR 3.0% (5.2°)	MDA 500 / 520
			THR ELEV 169 FT	ALS length 900 M
				LDA 10057 FT



MISSED APPROACH:

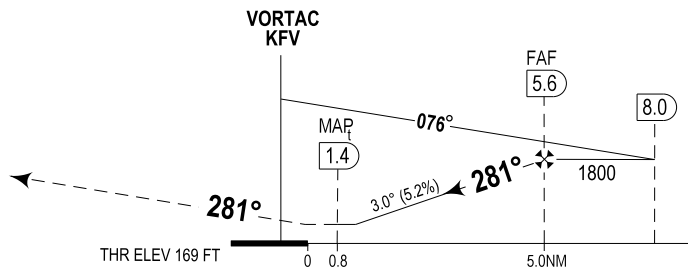
Climb on course 281° to 3000.
Expect vectoring by KEFLAVIK APP.

RCF:

At KfV 10 DME turn right on heading 010°, intercept KfV radial 330 and hold at TOBSI at 3000

DIST TO KfV	2	3	4	5
ALTITUDE	670	985	1305	1620

Timing not authorized for defining MAP_t



TA 7000

CHANGES: RESTRICTED AREA BIR2 REMOVED

CATEGORY	C		D	
VORTAC 28	500	-0.8 332 (400-0.8/1.5)	520	-0.9 352 (400-0.9/1.6)
CIRCLING	870	-3.3 701 (800-3.3)	940	-3.6 771 (800-3.6)

VORTAC RWY 28 (CAT C-D)

KEFLAVIK (BIKF)

THIS PAGE INTENTIONALLY LEFT BLANK