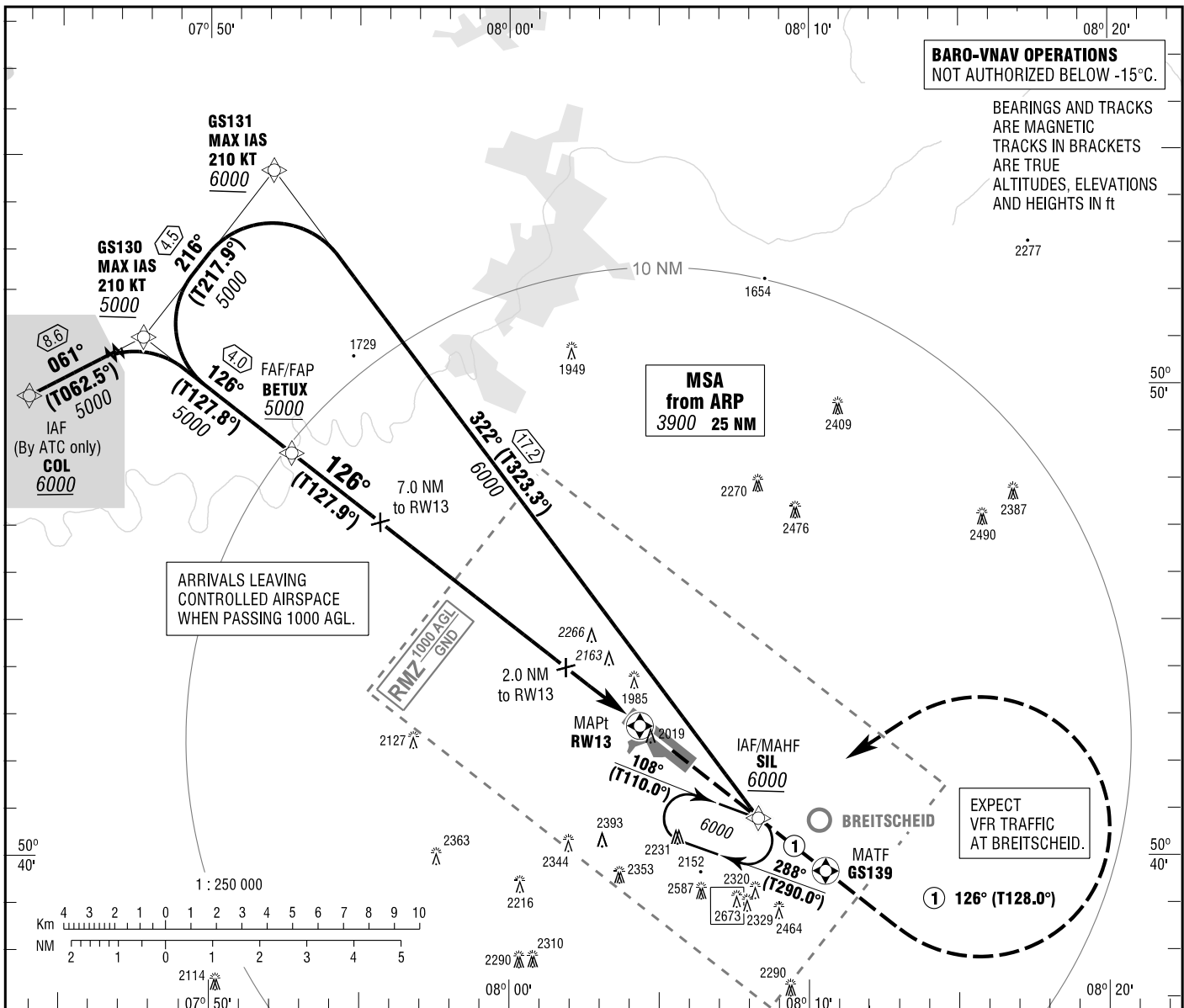


INSTRUMENT
APPROACH
CHART - ICAO

VAR 2° E
ELEV 1966
OCH RELATED TO
THR 13 ELEV1961

SIEGERLAND ATIS 128.705
LANGEN RADAR 124.900
SIEGERLAND INFORMATION 120.380

SIEGERLAND
RNP RWY 13
EGNOS CH 59912 E13A



BARO-VNAV OPERATIONS
NOT AUTHORIZED BELOW -15°C.

BEARINGS AND TRACKS
ARE MAGNETIC
TRACKS IN BRACKETS
ARE TRUE
ALTITUDES, ELEVATIONS
AND HEIGHTS IN ft

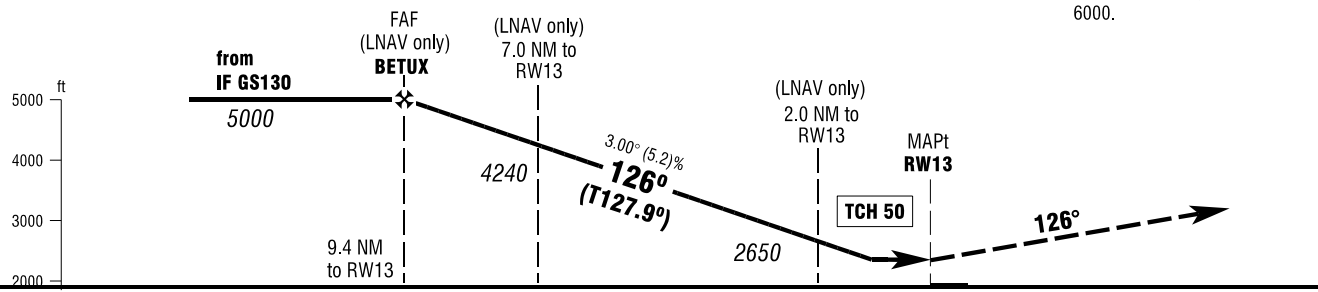
MSA
from ARP
3900 25 NM

ARRIVALS LEAVING
CONTROLLED AIRSPACE
WHEN PASSING 1000 AGL.

EXPECT
VFR TRAFFIC
AT BREITSCHEID.

MISSED APPROACH PROCEDURE

Climb on track 126° to GS139 or 3000, whichever is later; LT direct SIL climbing 6000.



OCA (OCH)	A	B	C
LNAV	2370 (410)	2370 (410)	2370 (410)
LNAV / VNAV	2258 (297)	2265 (304)	2273 (312)
LPV	2370 (410)	2370 (410)	2370 (410)

DIST THR / RW13	9	8	7	6	5	4	3	2
ALTITUDE	4880	4560	4240	3930	3610	3290	2970	2650

Timing not authorized for defining the MAPt.

GS	kt	80	100	120	140	160
BETUX - RW13 (9.4 NM)	MIN:SEC	7:03	5:38	4:42	4:02	3:32
Rate of descent (5.2%)	ft / MIN	420	530	640	740	850

Correction: Note deleted.