

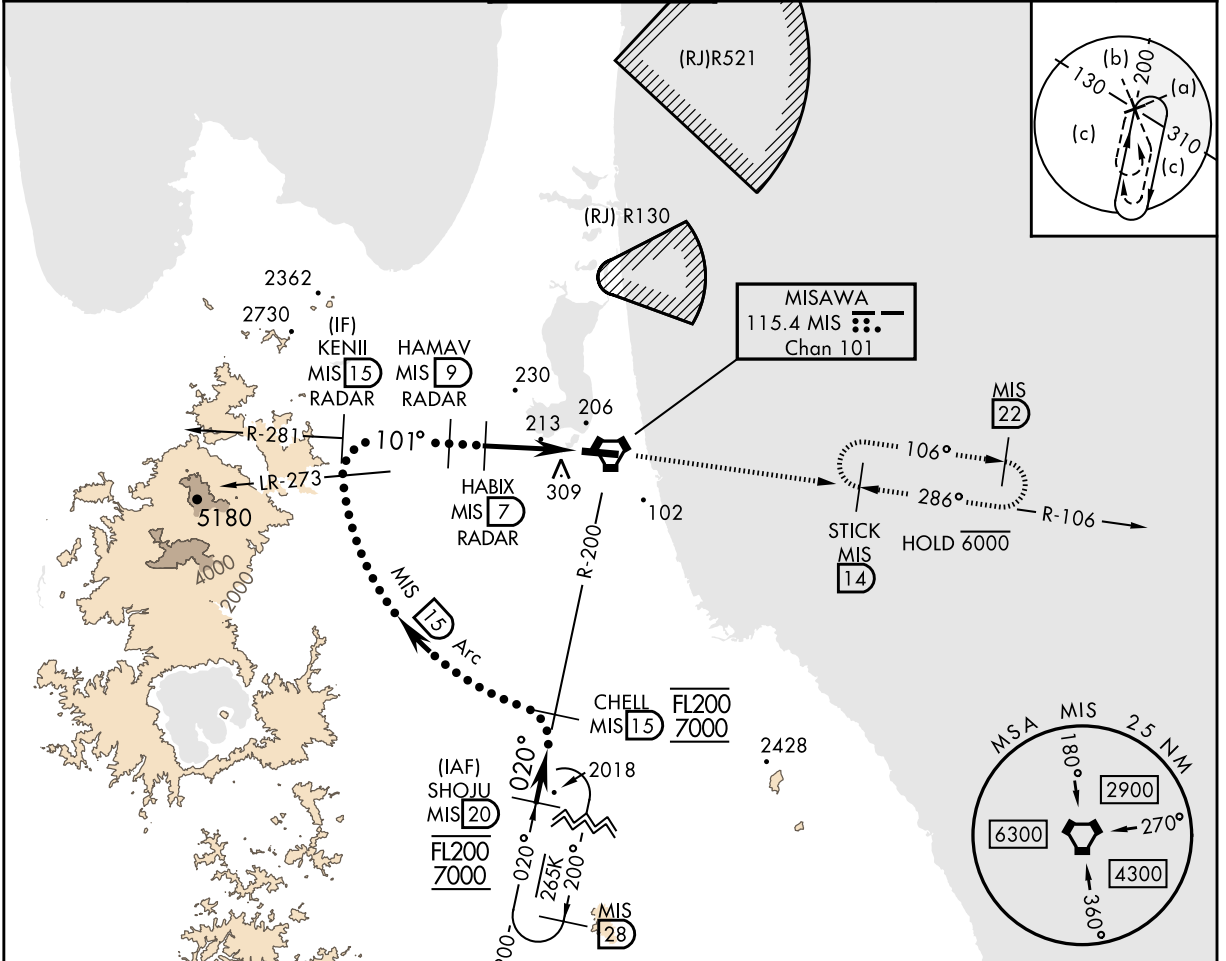
INSTRUMENT APPROACH CHART

RJSM / MISAWA

VORTAC MIS 115.4 Chan 101	APCH CRS 101°	Rwy ldg TDZE 119 Arpt Elev 119
---	-------------------------	--

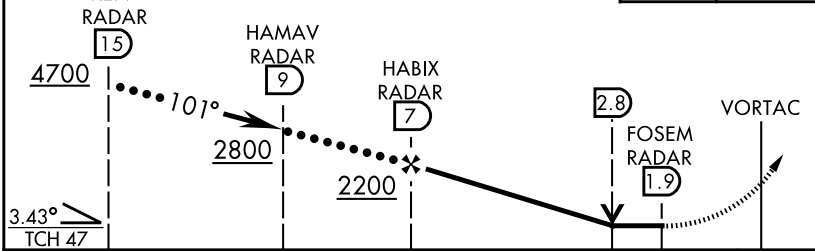
HI-VOR Y or TACAN Y RWY10

RADAR or DME required * When ALS inop, increase RVR CAT AB to 55 and vis to 1 mile, CAT CDE vis to 1 3/8 miles. ** Circling S of Rwy 10-28 not authorized.		ALSF-1 	MISSED APPROACH: Climb to 4000 on MIS VORTAC R-106 to STICK and hold. Continue climb in holding to 4000.			
ATIS ★ 128.4 315.35	APP CON 120.7 317.8	TOWER 118.1 315.8	GND CON 118.65 275.8	CLNC DEL 118.65 275.8	ASR/PAR	



EMERG SAFE ALT 100 NM 8700

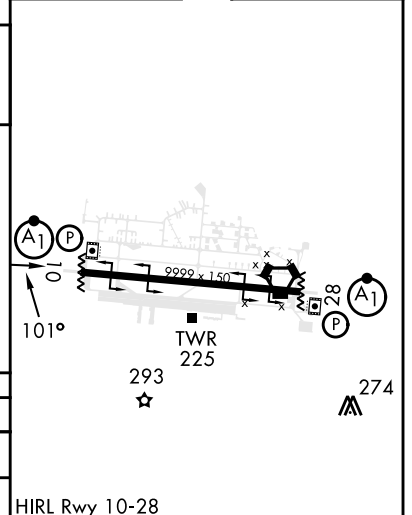
VGSI and descent angles not coincident (VGSI Angles 3.00/TCH 47)		TLv FL140 TA 14,000	4000 MIS R-106	STICK MIS 14
--	--	------------------------	----------------------	--------------------



CHANGE: Update.

CATEGORY	A	B	C	D	E
S-10 *	620/24	501 (600-1/2)	620/55	501	(600-1)
CIRCLING **	620-1	501 (600-1)	620-1 1/2 501(600-1 1/2)	680-2	561 (600-2)

ELEV 119	TDZE 119
----------	----------



NOTE: REPRINTING DOD FLIP