

STANDARD DEPARTURE CHART  
INSTRUMENT (SID) - ICAO

TRANSITION ALTITUDE  
10 000

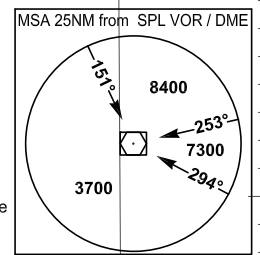
SPLIT ATIS 125.300  
SPLIT TOWER 124.675  
SPLIT RADAR 120.875

KEMIX 3A  
UNIPA 1G  
VELIT 8E  
RILIM 5F  
VELUG 2D

SIRMI 2E  
KEMEN 1J  
ORAKA 7D  
TORPO 8E  
SPL 2D

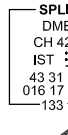
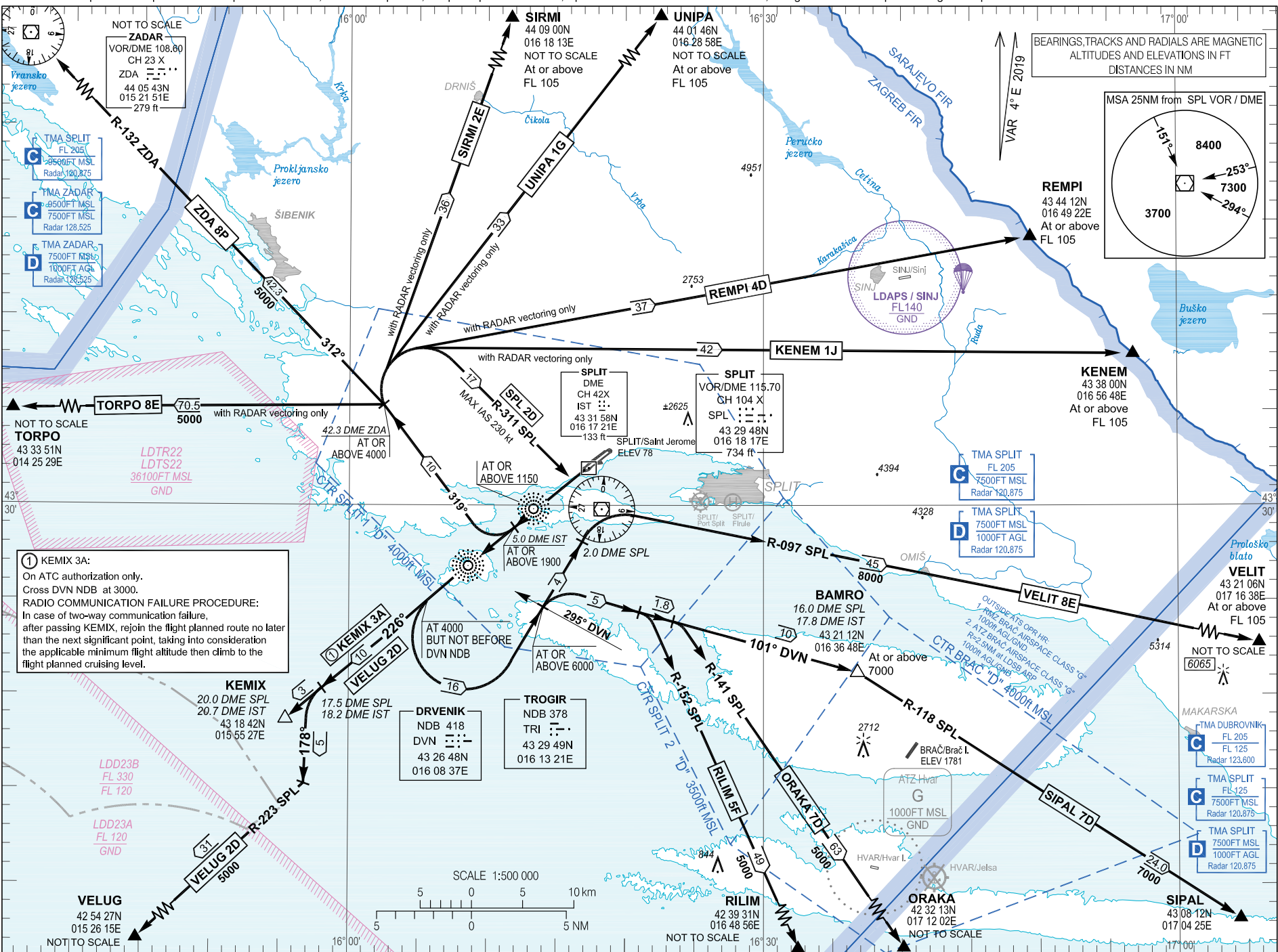
SPLIT/ Sveti Jeronim (LDSP)  
SPLIT/ Saint Jerome (LDSP)  
RWY 23

BEARINGS, TRACKS AND RADIALS ARE MAGNETIC  
ALTITUDES AND ELEVATIONS IN FT  
DISTANCES IN NM



VAR 4° E 2019

CHANGE: Airport name Split/Kaštela to Split/Saint Jerome; Obstacles updated; Heliport Split/Firule added; Split/Resnik Water aerodrome removed; Designation/Name for parachuting zone updated.



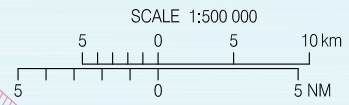
**① KEMIX 3A:**  
On ATC authorization only.  
Cross DVN NDB at 3000.  
RADIO COMMUNICATION FAILURE PROCEDURE:  
In case of two-way communication failure,  
after passing KEMIX, rejoin the flight planned route no later  
than the next significant point, taking into consideration  
the applicable minimum flight altitude then climb to the  
flight planned cruising level.

**DRVENIK**  
NDB 418  
DVN 43 26 48N  
016 08 37E

**TROGIR**  
NDB 378  
TRI 43 29 49N  
016 13 21E

© Hrvatska kontrola zračne plovidbe d.o.o.  
© Croatia Control Ltd.

AIRAC AIP AMDT 009/2024



OVA STRANICA JE NAMJERNO OSTAVLJENA PRAZNA  
THIS PAGE INTENTIONALLY LEFT BLANK